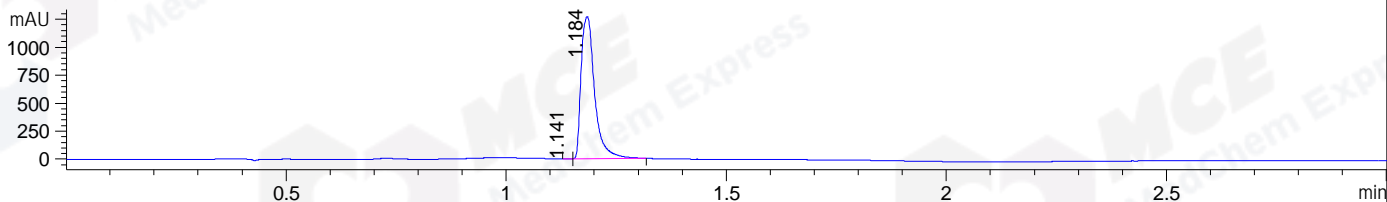
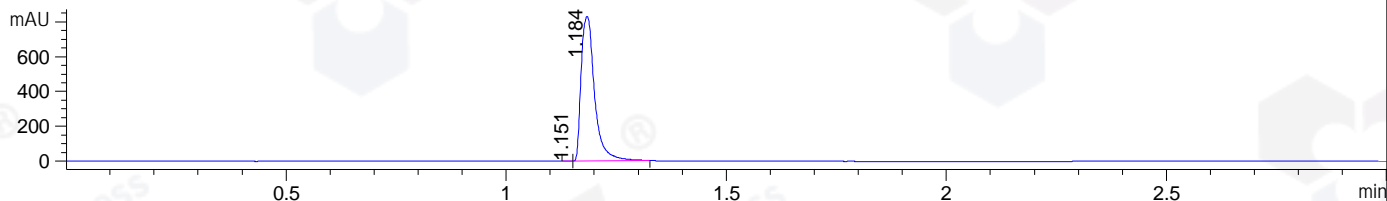


File ..\DATA\2019\20190414\561\CPK2019-411-19748.D Tgt Mass (CHM):  
 Injection Date : 14 Apr 19 12:30 pm +0800 Seq. Line : 36  
 Sample Name : CPK2019-411-19748 Location : P1-B-06  
 Acq. Operator : LQ\_1052 Inj : 1  
 Spec. Reported : MS Integration Inj Volume : 1 ul  
 Acq. Method : D:\Chem32\1\data\2019\20190414\561\1-POS-3MIN-1.M  
 Analysis Method : D:\CHEM32\1\DATA\2019\20190414\561\1-POS-3MIN-1.M  
 Catalog No : HY-19544 Batch#19748  
 Method Info : Mobile Phase: A: water(0.01%TFA) B:ACN(0.01%TFA)  
 Gradient: 5% to 95%B within 1.3 min  
 Flow Rate :1.8ml/min  
 Column :SunFire C18, 4.6\*50mm,3.5um A-RP-314  
 Oven Temperature : 45□

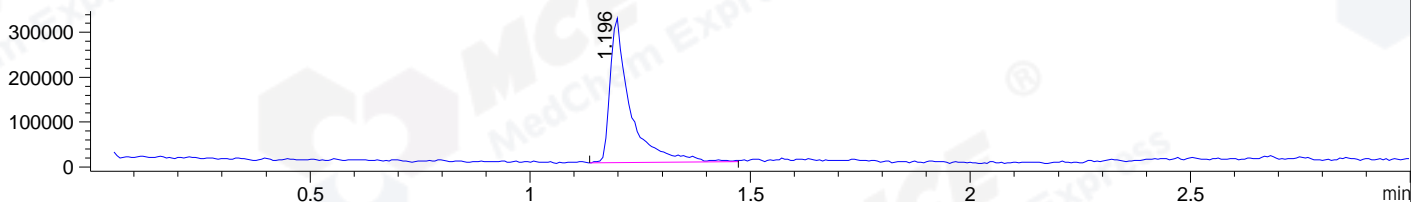
DAD1 B, Sig=214,4 Ref=off



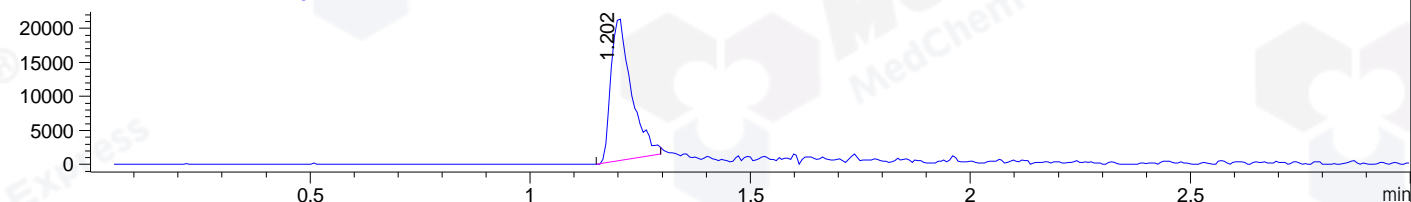
DAD1 C, Sig=254,4 Ref=off



MSD1 TIC, MS File ES-API, Pos, Scan, Frag: 70



Ion 509, MSD1 509, Target Mass 508 +H Positive, EIC=508.7:509.7



## Integration Results for DAD1 B, Sig=214,4 Ref=off

RetTim	Width	Area	Height	Area%	MS (+)
1.14	0.02	0.42	0.46	0.02	157
1.18	0.04	2699.54	1268.96	99.98	255

## Integration Results for DAD1 C, Sig=254,4 Ref=off

RetTim	Width	Area	Height	Area%	MS (+)
1.15	0.02	0.98	1.02	0.06	157
1.18	0.04	1761.33	830.57	99.94	255

## Integration Results for MSD1 TIC, MS File

RetTim	Width	Area	Height	Area%	MS (+)
1.20	0.04	1024565.19	324978.78	100.00	255

Ret. Time: 1.20

<<<< POSITIVE SPECTRA >>>>

