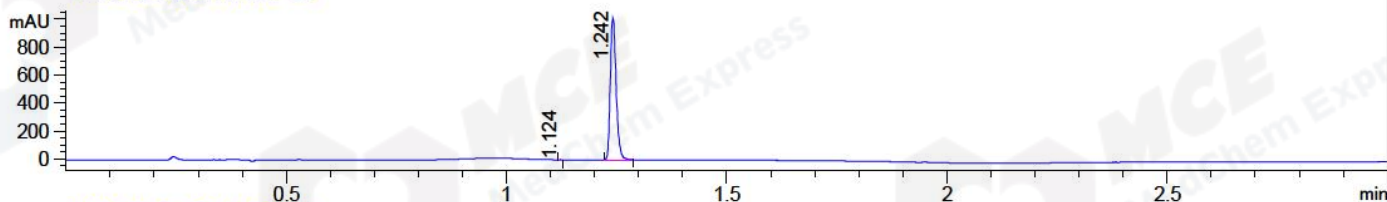


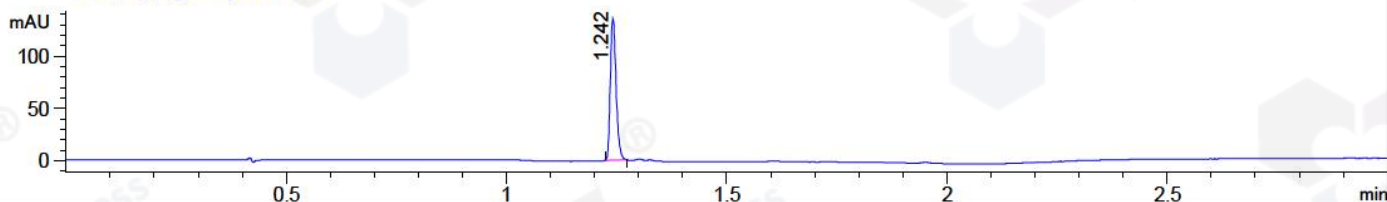
File ..\DATA\2018\20181030\470\BIZ2018-029-WYQ10.D Tgt Mass (CHM):

Injection Date : 30 Oct 18 11:19 am +0800 Seq. Line : 21
 Sample Name : BIZ2018-029-WYQ10 Location : P1-C-06
 Acq. Operator : LQ_1052 Inj : 1
 Spec. Reported : MS Integration Inj Volume : 1 ul
 Acq. Method : D:\Chem32\1\data\2018\20181030\470\1-POS-3MIN-1.M
 Analysis Method : D:\CHEM32\1\DATA\2018\20181030\470\1-POS-3MIN-1.M
 Catalog No : HY-19569 Batch#33762 A-RP-314
 Method Info : Mobile Phase: A: water(0.01%TFA) B:ACN(0.01%TFA)
 Gradient: 5% to 95%B within 1.3 min
 Flow Rate :1.8ml/min
 Column :SunFire C18, 4.6*50mm,3.5um A-RP-314
 Oven Temperature : 45□

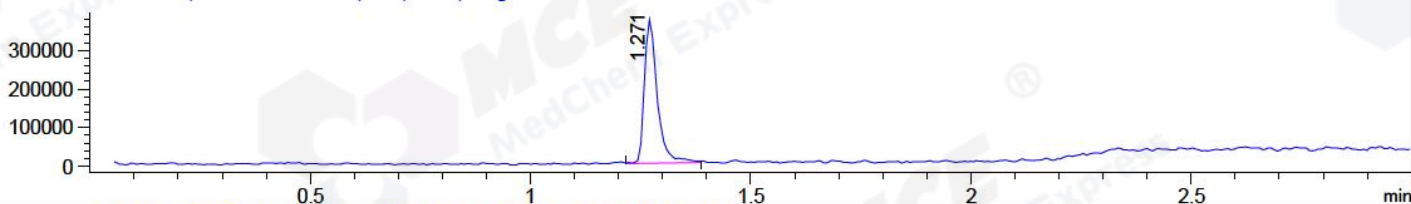
DAD1 B, Sig=214,4 Ref=off



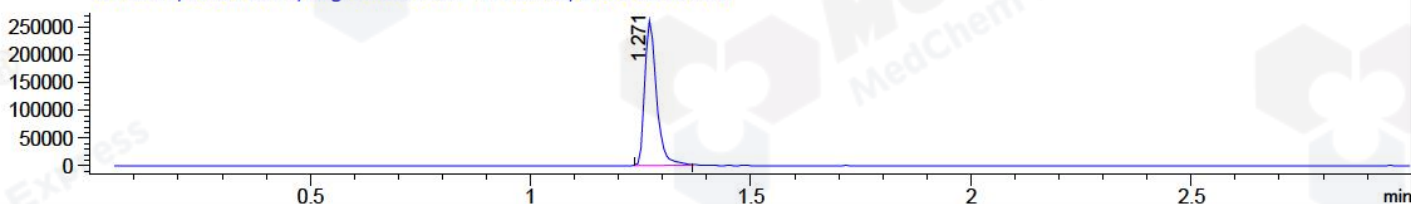
DAD1 C, Sig=254,4 Ref=off



MSD1 TIC, MS File ES-API, Pos, Scan, Frag: 70



Ion 381.1, MSD1 381.1, Target Mass 380.1 +H Positive, EIC=380.8:381.8



Integration Results for DAD1 B, Sig=214,4 Ref=off

| RetTim | Width | Area | Height | Area% | MS (+) |
|--------|-------|--------|---------|-------|--------|
| 1.12 | 0.01 | 0.34 | 0.67 | 0.04 | ND |
| 1.24 | 0.01 | 934.08 | 1021.23 | 99.96 | 381 |

Integration Results for DAD1 C, Sig=254,4 Ref=off

| RetTim | Width | Area | Height | Area% | MS (+) |
|--------|-------|--------|--------|--------|--------|
| 1.24 | 0.01 | 122.79 | 135.61 | 100.00 | 381 |

Integration Results for MSD1 TIC, MS File

| RetTim | Width | Area | Height | Area% | MS (+) |
|--------|-------|-----------|-----------|--------|--------|
| 1.27 | 0.03 | 755712.25 | 371767.78 | 100.00 | 381 |

Ret. Time: 1.27

<<<< POSITIVE SPECTRA >>>>

ES-API Positive

