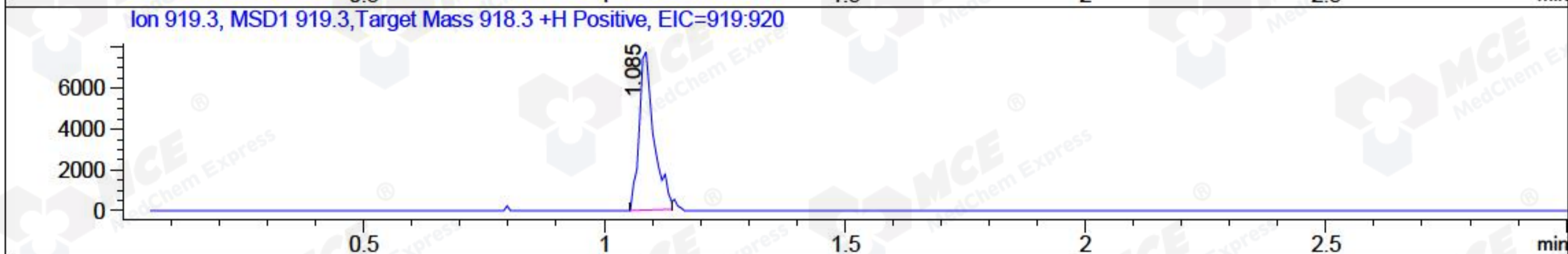
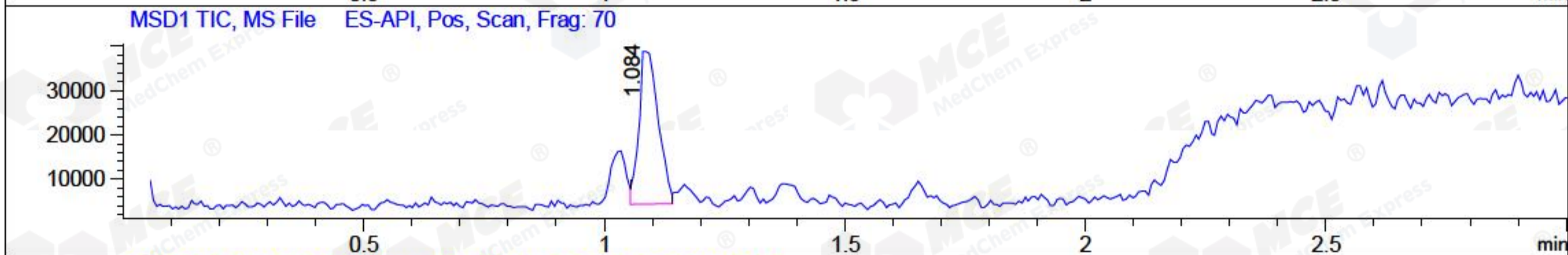
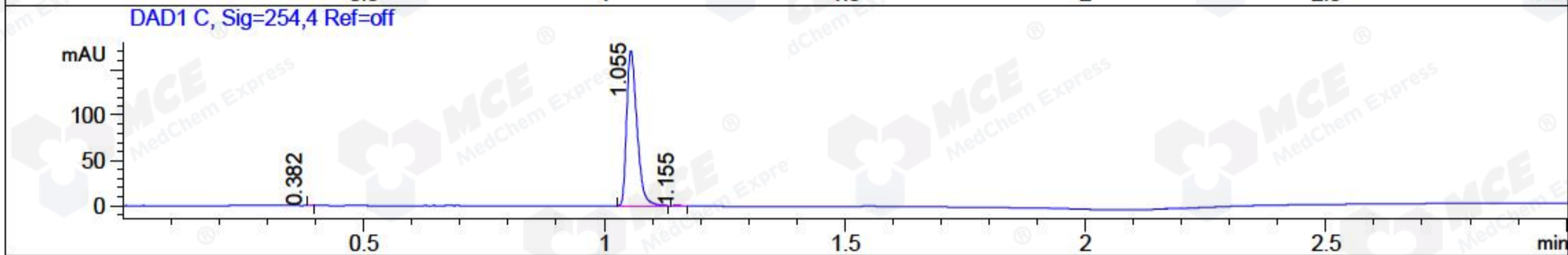
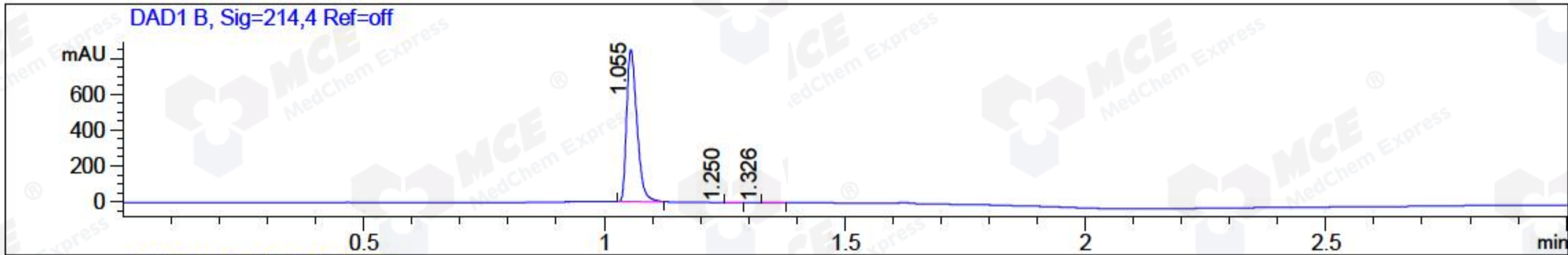


File ..02\_2 2018-02-02 14-19-45\BIZ2018-202-WYQ5.D Tgt Mass (CHM):  
 Injection Date : 2 Feb 18 2:58 pm +0800 Seq. Line : 9  
 Sample Name : BIZ2018-202-WYQ5 Location : P1-E-04  
 Acq. Operator : XLH\_854 Inj : 1  
 Spec. Reported : MS Integration Inj Volume : 1 ul  
 Acq. Method : D:\chem32\1\DATA\20180202\20180202\_2 2018-02-02 14-19-45\1-POS-3MIN-1.M  
 Analysis Method : D:\CHEM32\1\DATA\20180202\20180202\_2 2018-02-02 14-19-45\1-POS-3MIN-1.M  
 Catalog No : HY-19610 Batch#28563 A-RP-189  
 Method Info : Mobile Phase: A: water(0.01%TFA) B:ACN(0.01%TFA)  
 Gradient: 5% to 95%B within 1.3 min  
 Flow Rate :1.8ml/min  
 Column :SunFire C18, 4.6\*50mm,3.5um A-RP-186  
 Oven Temperature : 45C



Integration Results for DAD1 B, Sig=214,4 Ref=off

RetTim	Width	Area	Height	Area%	MS (+)
1.06	0.02	1267.35	849.91	99.79	919
1.25	0.06	1.00	0.03	0.08	ND
1.33	0.06	1.65	-0.01	0.13	324

Integration Results for DAD1 C, Sig=254,4 Ref=off

RetTim	Width	Area	Height	Area%	MS (+)
0.38	0.01	0.16	0.07	0.06	198
1.06	0.02	253.99	171.05	99.83	919
1.15	0.09	0.29	0.25	0.11	220

Integration Results for MSD1 TIC, MS File

RetTim	Width	Area	Height	Area%	MS (+)
1.08	0.04	96390.34	34523.39	100.00	919

Ret. Time: 1.08

&lt;&lt;&lt;&lt; POSITIVE SPECTRA &gt;&gt;&gt;&gt;

