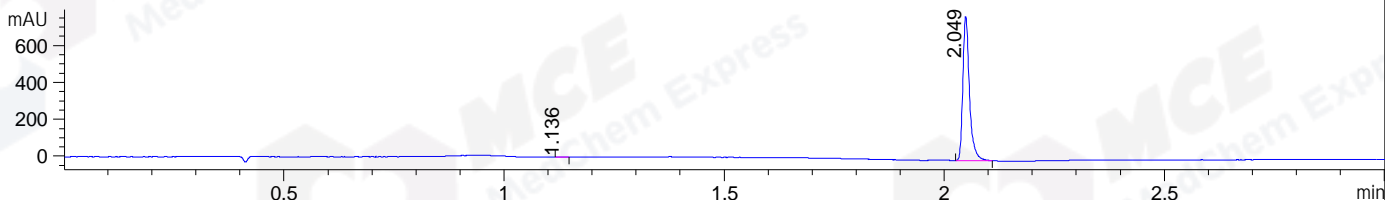
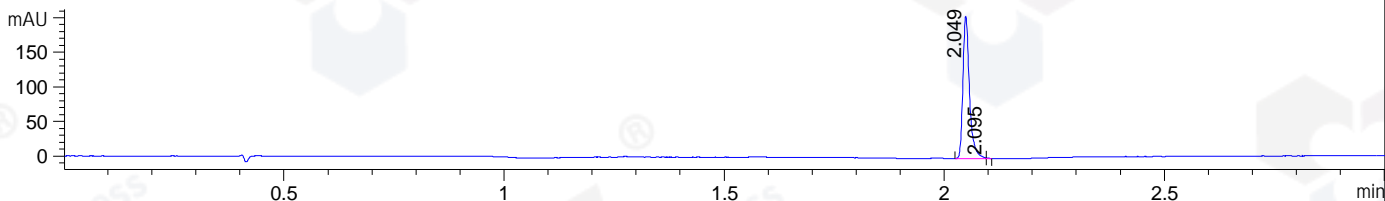


File ..DATA\2020\20201204\1183\BIZ2020-D03-WLQ11.D Tgt Mass (CHM):  
 Injection Date : 4 Dec 20 3:11 pm +0800 Seq. Line : 80  
 Sample Name : BIZ2020-D03-WLQ11 Location : P1-B-05  
 Acq. Operator : zyj\_1547 Inj : 1  
 Spec. Reported : MS Integration Inj Volume : 1 ul  
 Acq. Method : D:\Chem32\1\data\2020\20201204\1183\1-POS-3MIN.M  
 Analysis Method : D:\CHEM32\1\DATA\2020\20201204\1183\1-POS-3MIN.M  
 CAS NO. : 200933-14-8  
 Method Info : Mobile Phase: A: water(0.01%TFA) B:ACN(0.01%TFA)  
 Gradient: 5% to 95%B within 1.3 min  
 Flow Rate :1.8ml/min  
 Column :SunFire C18, 4.6\*50mm,3.5um A-RP-698

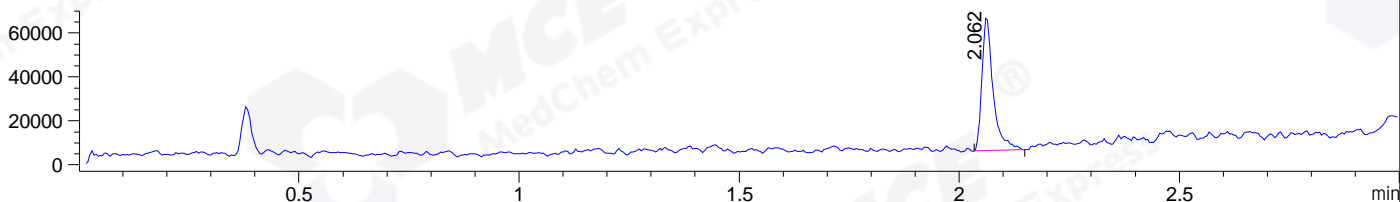
DAD1 B, Sig=214,4 Ref=off



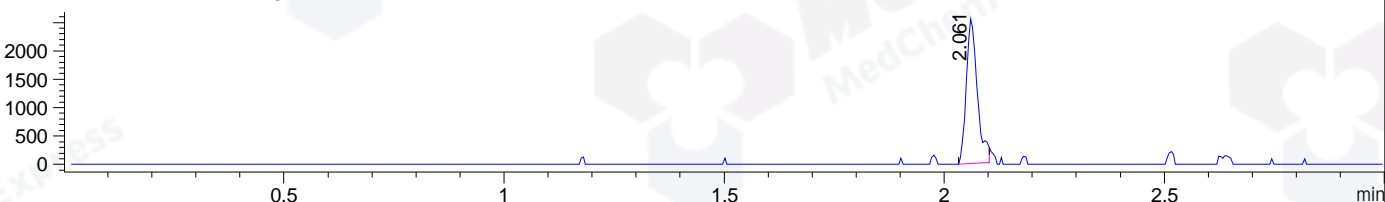
DAD1 C, Sig=254,4 Ref=off



MSD1 TIC, MS File ES-API, Pos, Scan, Frag: 70



Ion 344, MSD1 344, Target Mass 343 +H Positive, EIC=343.7:344.7



## Integration Results for DAD1 B, Sig=214,4 Ref=off

RetTim	Width	Area	Height	Area%	MS (+)
1.14	0.02	1.08	1.08	0.13	130
2.05	0.02	815.82	782.64	99.87	366

## Integration Results for DAD1 C, Sig=254,4 Ref=off

RetTim	Width	Area	Height	Area%	MS (+)
2.05	0.02	213.28	206.07	99.81	366
2.10	0.01	0.41	1.13	0.19	130

## Integration Results for MSD1 TIC, MS File

RetTim	Width	Area	Height	Area%	MS (+)
2.06	0.03	107588.64	61363.52	100.00	130

Ret. Time: 2.06

<<<< POSITIVE SPECTRA >>>>

