

File ..213 2019-12-13 17-00-55\CPK2019-D11-19196.D Tgt Mass (CHM):

Injection Date : 13 Dec 19 10:32 pm +0800 Seq. Line : 64

Sample Name : CPK2019-D11-19196 Location : P1-E-06

Acq. Operator : SYSTEM Inj : 1

Spec. Reported : MS Integration Inj Volume : 0.5 ul

Acq. Method : D:\LCMS03\Data\20191213\20191213 2019-12-13 17-00-55\1-POS-3MIN.M

Analysis Method : D:\CHEM32\1\DATA\2019\20191213\20191213 2019-12-13 17-00-55\1-POS-3MIN.M

Catalog No : HY-19621 Batch#62646

Method Info : Mobile Phase: A: water(0.01%TFA) B:ACN(0.01%TFA)

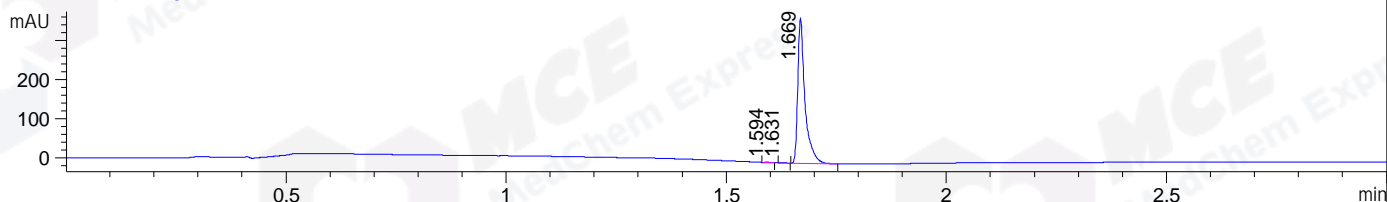
Gradient: 5% to 95%B within 1.3 min

Flow Rate :1.8ml/min

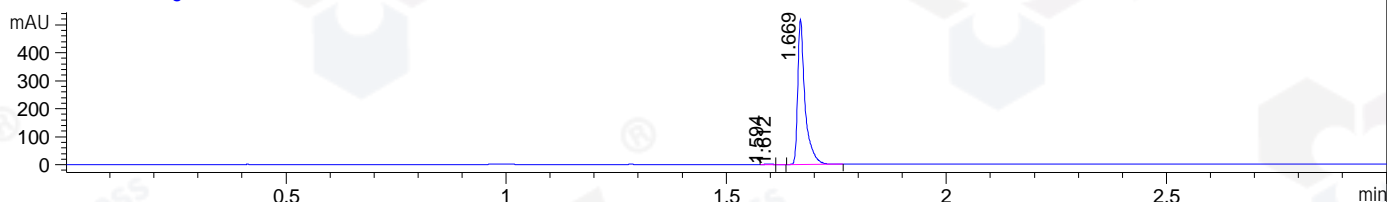
Column :SunFire C18, 4.6*50mm,3.5um A-RP-446

Oven Temperature : 45C

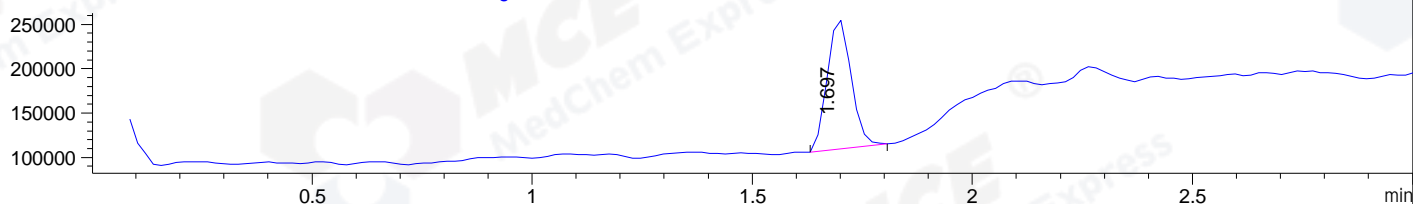
DAD1 A, Sig=214,4 Ref=off



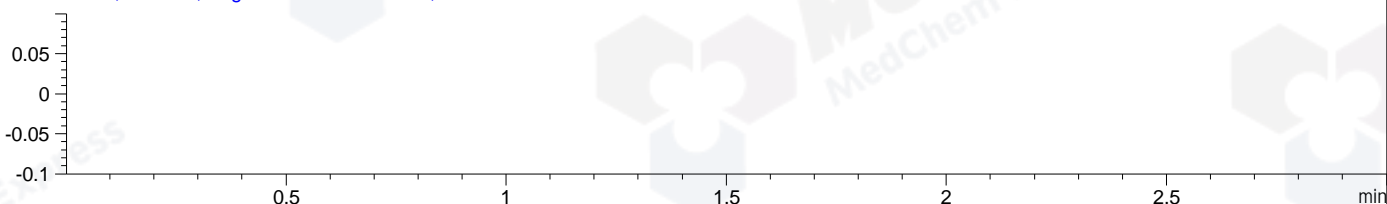
DAD1 B, Sig=254,4 Ref=off



MSD1 TIC, MS File ES-API, Pos, Scan, Frag: 70



Ion 1, MSD1 1, Target Mass 0 +H Positive, EIC=0.7:1.7



Integration Results for DAD1 A, Sig=214,4 Ref=off

RetTim	Width	Area	Height	Area%	MS (+)
1.59	0.01	0.75	0.93	0.18	114
1.63	0.01	0.68	0.82	0.16	114
1.67	0.02	425.34	372.50	99.67	292

Integration Results for DAD1 B, Sig=254,4 Ref=off

RetTim	Width	Area	Height	Area%	MS (+)
1.59	0.02	1.34	1.39	0.22	114
1.61	0.01	0.21	0.30	0.03	114
1.67	0.02	598.30	520.90	99.74	292

Integration Results for MSD1 TIC, MS File

RetTim	Width	Area	Height	Area%	MS (+)
1.70	0.06	557355.94	147682.83	100.00	114

Ret. Time: 1.70

<<<< POSITIVE SPECTRA >>>>

