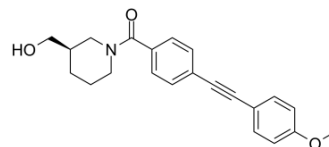


## ML289

Cat. No.:	HY-19630
CAS No.:	1382481-79-9
Molecular Formula:	C <sub>22</sub> H <sub>23</sub> NO <sub>3</sub>
Molecular Weight:	349.42
Target:	mGluR
Pathway:	GPCR/G Protein; Neuronal Signaling
Storage:	Please store the product under the recommended conditions in the COA.



### BIOLOGICAL ACTIVITY

Description	ML289 (VU0463597) is a potent, selective, and CNS-penetrant mGlu3 (IC <sub>50</sub> =0.66 μM) negative allosteric modulator. ML289 displays >15-fold selectivity over mGlu2 and is inactive against mGlu5 <sup>[1]</sup> .
IC <sub>50</sub> & Target	mGluR3 0.66 μM (IC <sub>50</sub> )
In Vitro	ML289 (VU0463597) is a CNS-penetrant, metabotropic glutamate receptor 3 (mGlu3) negative allosteric modulator probe <sup>[1]</sup> .

### REFERENCES

[1]. Sheffler DJ, et al. Development of a novel, CNS-penetrant, metabotropic glutamate receptor 3 (mGlu3) NAM probe (ML289) derived from a closely related mGlu5 PAM. *Bioorg Med Chem Lett.* 2012;22(12):3921-3925.

**Caution: Product has not been fully validated for medical applications. For research use only.**

Tel: 609-228-6898

Fax: 609-228-5909

E-mail: tech@MedChemExpress.com

Address: 1 Deer Park Dr, Suite Q, Monmouth Junction, NJ 08852, USA