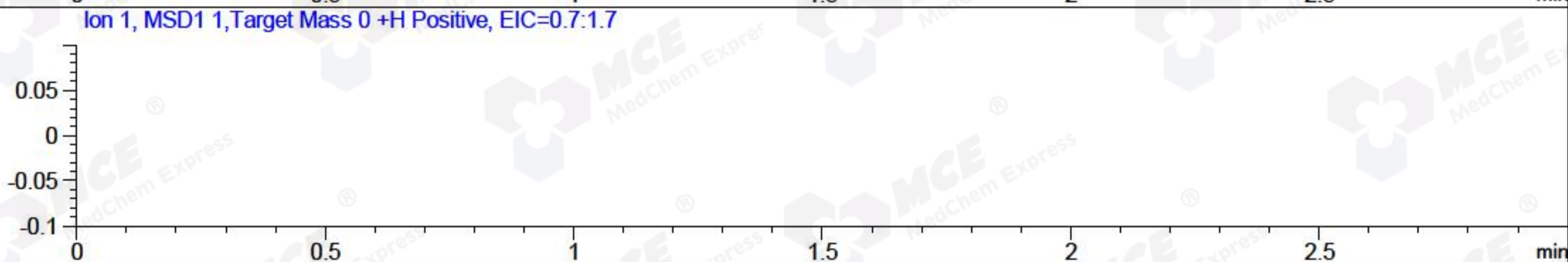
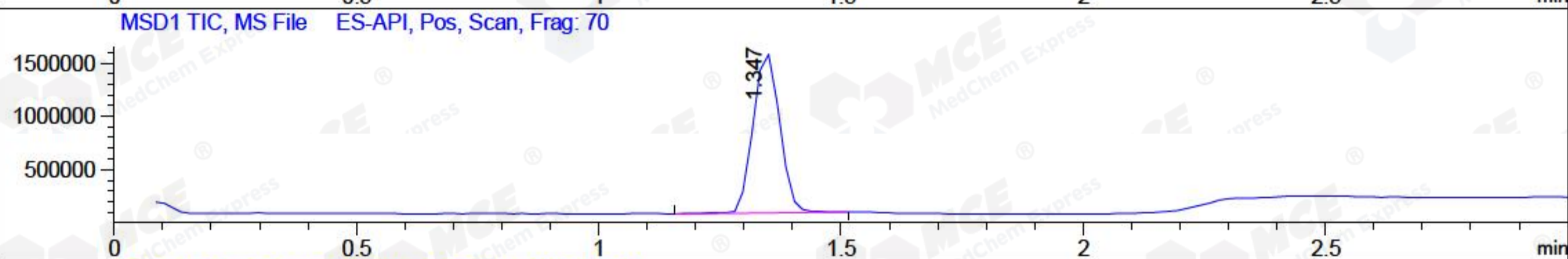
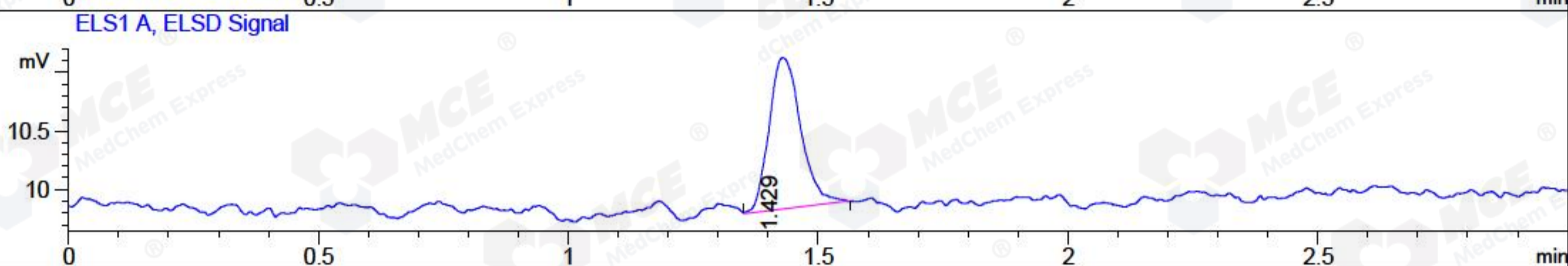
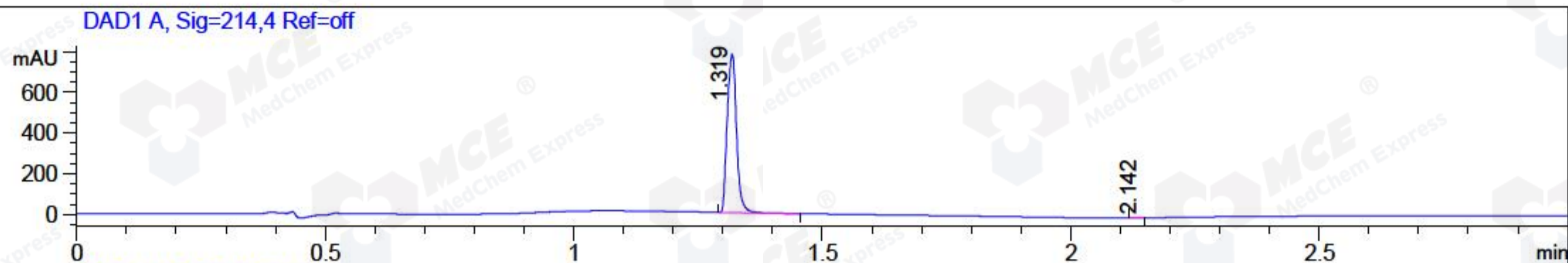


File ..018\20181126\20181126 2\CPK2018-N26-19587.D Tgt Mass (CHM):
 Injection Date : 26 Nov 18 3:21 pm +0800 Seq. Line : 11
 Sample Name : CPK2018-N26-19587 Location : P1-E-10
 Acq. Operator : SYSTEM Inj : 1
 Spec. Reported : MS Integration Inj Volume : 1 ul
 Acq. Method : D:\LCMS03\Data\2018\20181126\20181126 2\1-POS-3MIN.M
 Analysis Method : D:\LCMS03\Data\2018\20181126\20181126 2\1-POS-3MIN.M
 Catalog No : HY-19636 Batch#19587
 Method Info : Mobile Phase: A: water(0.01%TFA) B:ACN(0.01%TFA)
 Gradient: 5% to 95%B within 1.3 min
 Flow Rate : 1.8ml/min
 Column :SunFire C18, 4.6*50mm,3.5um A-RP-186
 Oven Temperature : 45C



Integration Results for DAD1 A, Sig=214,4 Ref=off

RetTim	Width	Area	Height	Area%	MS (+)
1.32	0.02	1009.56	779.46	99.97	411
2.14	0.02	0.25	0.23	0.03	233

Integration Results for ELS1 A, ELSD Signal

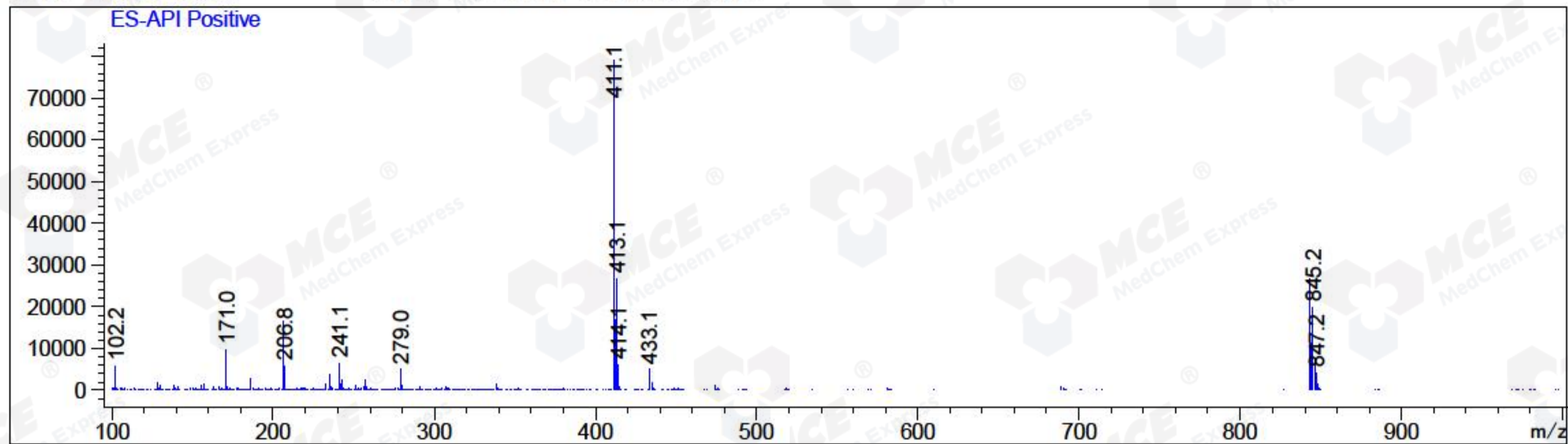
RetTim	Width	Area	Height	Area%	MS (+)
1.43	0.07	5.71	1.30	100.00	411

Integration Results for MSD1 TIC, MS File

RetTim	Width	Area	Height	Area%	MS (+)
1.35	0.06	5721264.00	1514075.88	100.00	411

Ret. Time: 1.35

<<<< POSITIVE SPECTRA >>>>



*** End of Report ***