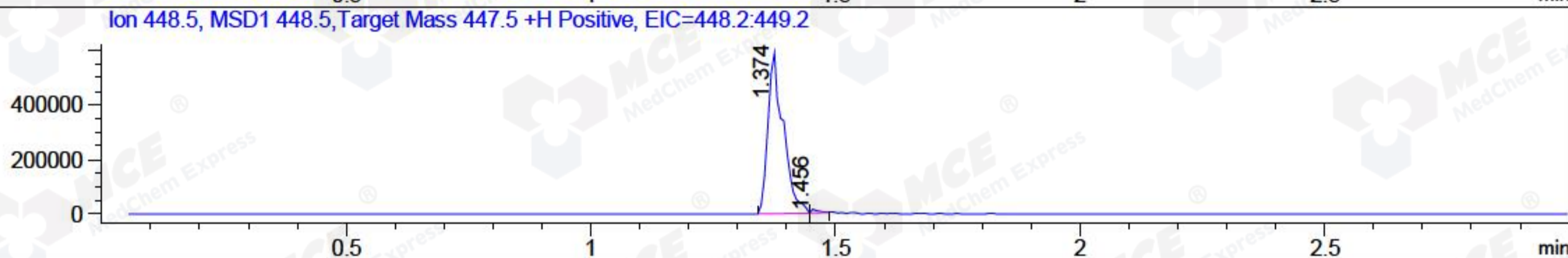
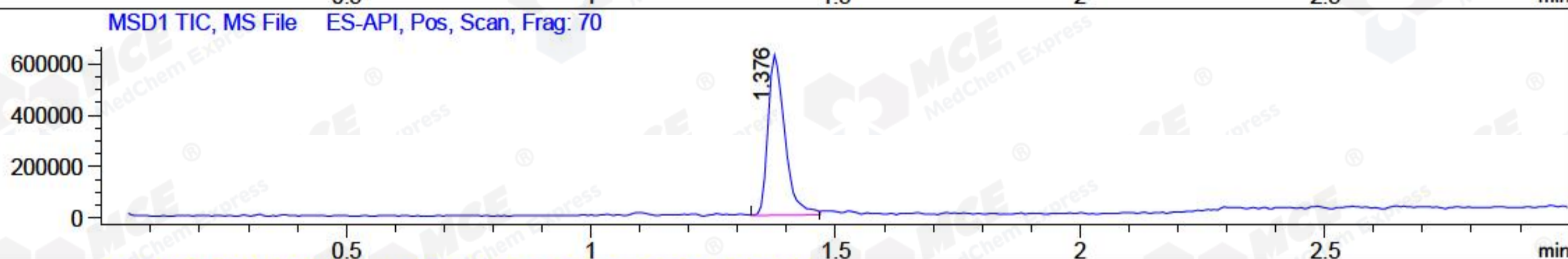
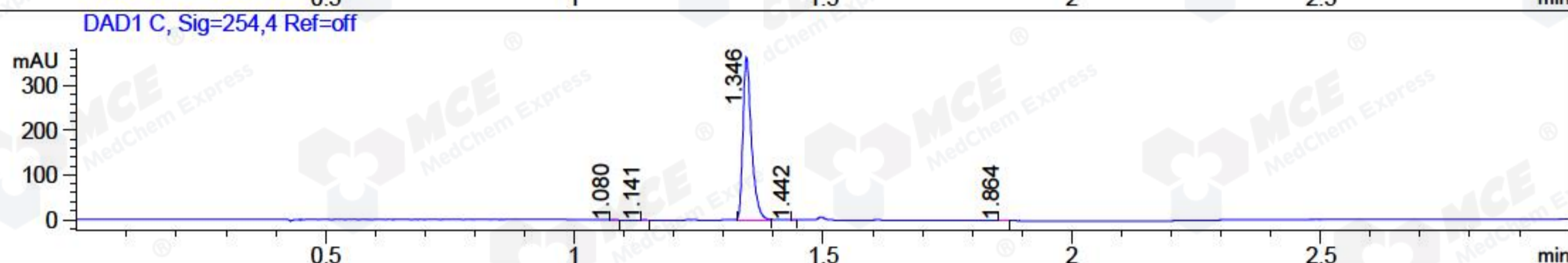
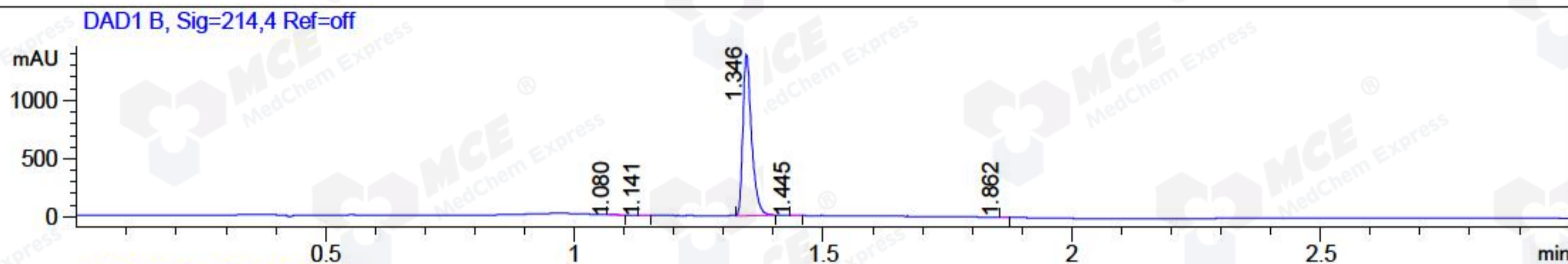


File ..\DATA\2018\20181128\509\CPK2018-N28-19516.D Tgt Mass (CHM):  
 Injection Date : 28 Nov 18 6:35 pm +0800 Seq. Line : 13  
 Sample Name : CPK2018-N28-19516 Location : P2-E-05  
 Acq. Operator : LQ\_1052 Inj : 1  
 Spec. Reported : MS Integration Inj Volume : 1 ul  
 Acq. Method : D:\Chem32\1\data\2018\20181128\509\1-POS-3MIN-1.M  
 Analysis Method : D:\CHEM32\1\DATA\2018\20181128\509\1-POS-3MIN-1.M  
 Catalog No : HY-19644 Batch#19516 A-RP-314  
 Method Info : Mobile Phase: A: water(0.01%TFA) B:ACN(0.01%TFA)  
 Gradient: 5% to 95%B within 1.3 min  
 Flow Rate :1.8ml/min  
 Column :SunFire C18, 4.6\*50mm,3.5um A-RP-314  
 Oven Temperature : 45□



Integration Results for DAD1 B, Sig=214,4 Ref=off

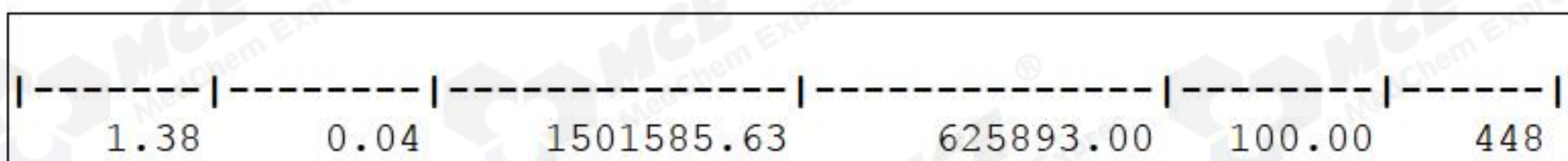
RetTim	Width	Area	Height	Area%	MS (+)
1.08	0.01	3.54	4.68	0.21	202
1.14	0.01	1.50	1.73	0.09	ND
1.35	0.02	1686.51	1386.45	99.51	448
1.44	0.02	1.48	1.53	0.09	448
1.86	0.01	1.71	2.20	0.10	448

Integration Results for DAD1 C, Sig=254,4 Ref=off

RetTim	Width	Area	Height	Area%	MS (+)
1.08	0.01	0.87	1.30	0.20	202
1.14	0.01	0.26	0.37	0.06	ND
1.35	0.02	435.00	363.97	99.61	448
1.44	0.01	0.13	0.34	0.03	448
1.86	0.01	0.44	0.51	0.10	448

Integration Results for MSD1 TIC, MS File

RetTim	Width	Area	Height	Area%	MS (+)
--------	-------	------	--------	-------	--------



Ret. Time: 1.38

<<<< POSITIVE SPECTRA >>>>

ES-API Positive

