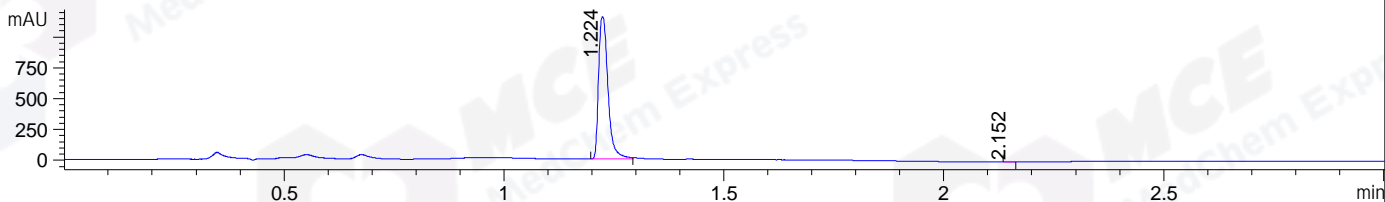
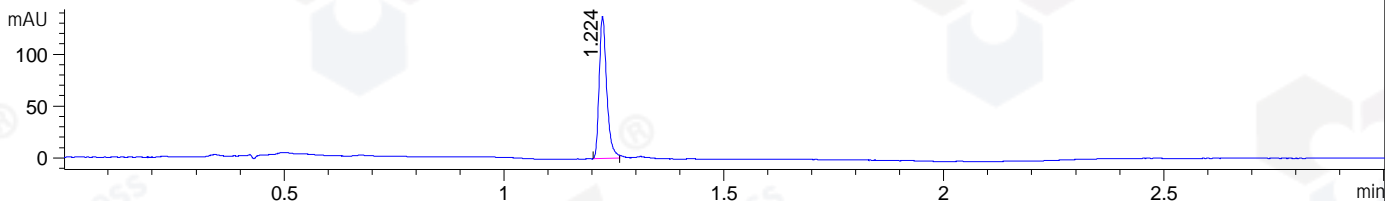


File ..\DATA\2019\20190215\543\BIZ2019-215-WYQ27.D Tgt Mass (CHM):
Injection Date : 15 Feb 19 4:49 pm +0800 Seq. Line : 13
Sample Name : BIZ2019-215-WYQ27 Location : P2-C-02
Acq. Operator : LQ_1052 Inj : 1
Spec. Reported : MS Integration Inj Volume : 1 ul
Acq. Method : D:\Chem32\1\data\2019\20190215\543\1-POS-3MIN-1.M
Analysis Method : D:\CHEM32\1\DATA\2019\20190215\543\1-POS-3MIN-1.M
Catalog No : HY-19695 Batch#37482
Method Info : Mobile Phase: A: water(0.01%TFA) B:ACN(0.01%TFA)
Gradient: 5% to 95%B within 1.3 min
Flow Rate :1.8ml/min
Column :SunFire C18, 4.6*50mm,3.5um A-RP-314
Oven Temperature : 45

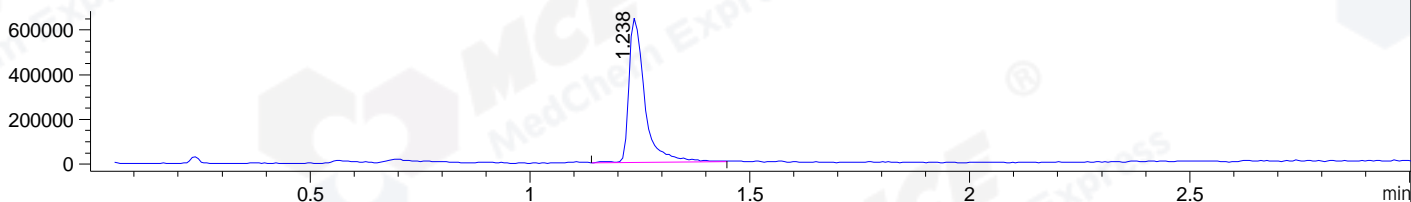
DAD1 B, Sig=214,4 Ref=off



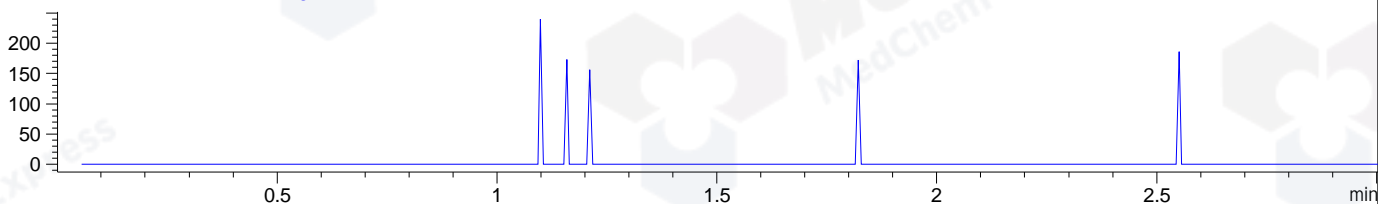
DAD1 C, Sig=254,4 Ref=off



MSD1 TIC, MS File ES-API, Pos, Scan, Frag: 70



Ion 372.9, MSD1 372.9, Target Mass 371.9 +H Positive, EIC=372.6:373.6



Integration Results for DAD1 B, Sig=214,4 Ref=off

RetTim	Width	Area	Height	Area%	MS (+)
1.22	0.02	1700.77	1154.76	99.88	285
2.15	0.01	1.99	2.29	0.12	142

Integration Results for DAD1 C, Sig=254,4 Ref=off

RetTim	Width	Area	Height	Area%	MS (+)
1.22	0.02	162.42	137.03	100.00	285

Integration Results for MSD1 TIC, MS File

RetTim	Width	Area	Height	Area%	MS (+)
1.24	0.04	1610187.00	645693.38	100.00	285

Ret. Time: 1.24

<<<< POSITIVE SPECTRA >>>>

ES-API Positive

