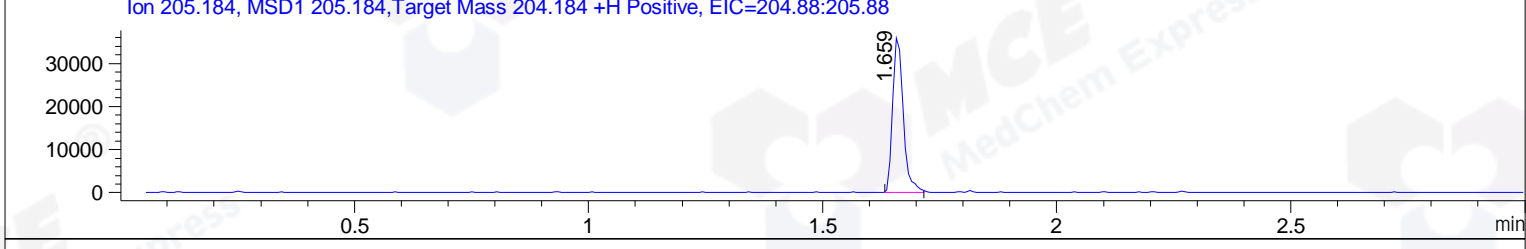
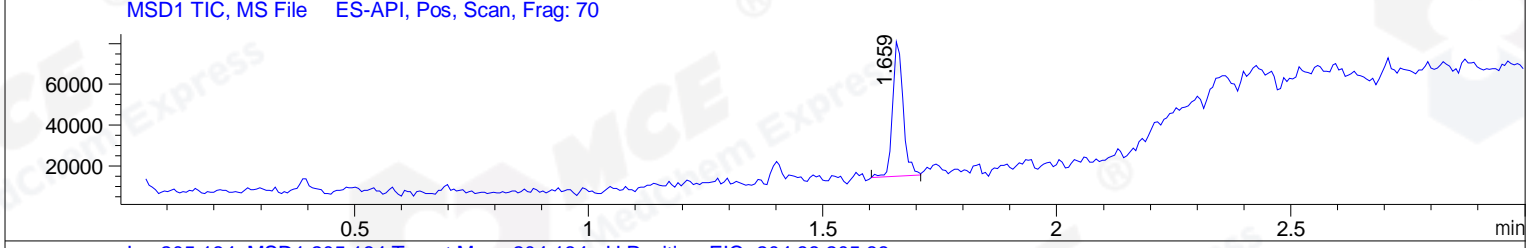
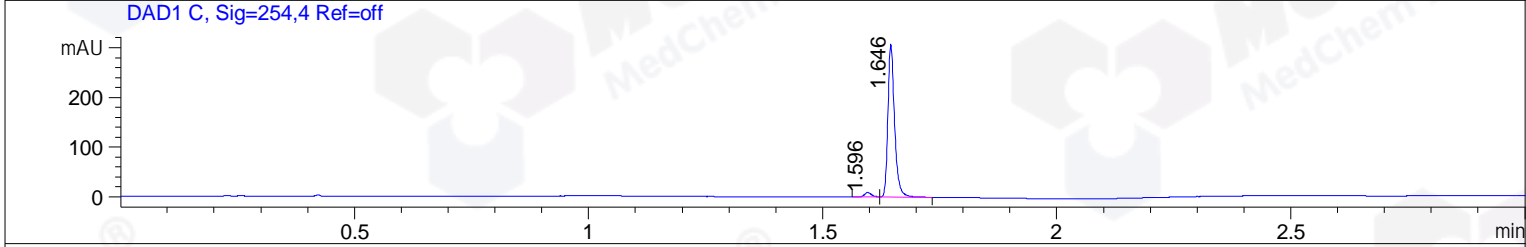
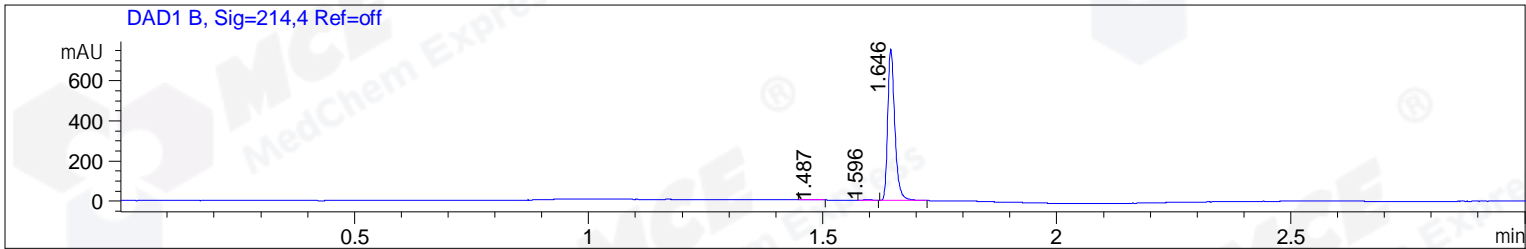


File ..DATA\2019\20190813\684\CPK2019-813-24310-.D Tgt Mass (CHM):
 Injection Date : 13 Aug 19 3:38 pm +0800 Seq. Line : 80
 Sample Name : CPK2019-813-24310 Location : PL-B-08
 Acq. Operator : ZJ_1432 Inj : 1
 Spec. Reported : MS Integration Inj Volume : 0.3 ul
 Acq. Method : D:\Chem32\1\data\2019\20190813\684\1-POS-3MIN.M
 Analysis Method : D:\CHEM32\1\DATA\2019\20190813\684\1-POS-3MIN.M
 Catalog No : HY-19707 Batch#24310
 Method Info : Mobile Phase: A: water(0.01%TFA) B:ACN(0.01%TFA)
 Gradient: 5% to 95%B within 1.3 min
 Flow Rate :1.8ml/min
 Column :SunFire C18, 4.6*50mm,3.5um A-RP-433
 Oven Temperature : 45



Integration Results for DAD1 B, Sig=214,4 Ref=off

RetTim	Width	Area	Height	Area%	MS (+)
1.49	0.03	4.90	2.79	0.61	159
1.60	0.02	3.48	3.62	0.43	159
1.65	0.02	792.97	754.66	98.95	205

Integration Results for DAD1 C, Sig=254,4 Ref=off

RetTim	Width	Area	Height	Area%	MS (+)
1.60	0.02	10.47	9.32	3.30	159
1.65	0.02	306.80	308.17	96.70	205

Integration Results for MSD1 TIC, MS File

RetTim	Width	Area	Height	Area%	MS (+)
1.66	0.02	100956.73	67507.12	100.00	205

Ret. Time: 1.66

<<<< POSITIVE SPECTRA >>>>

ES-API Positive

