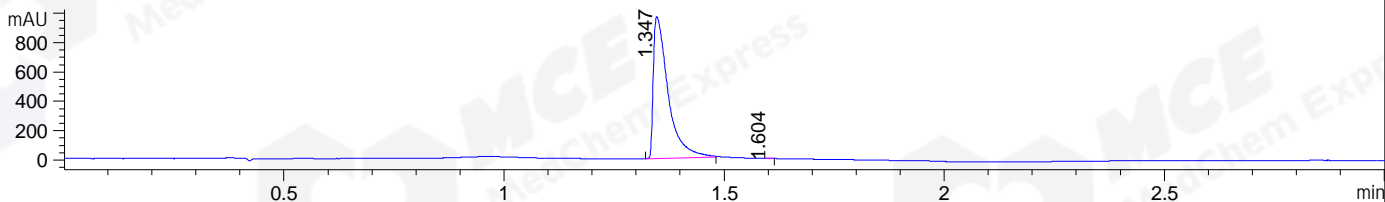
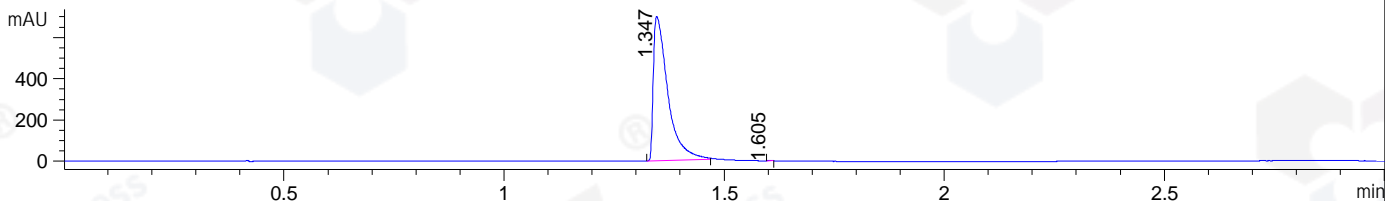


File ..\DATA\2018\20181026\470\CPK2018-O26-19637.D Tgt Mass (CHM):  
 Injection Date : 26 Oct 18 6:14 pm +0800 Seq. Line : 8  
 Sample Name : CPK2018-O26-19637 Location : P2-E-05  
 Acq. Operator : LQ\_1052 Inj : 1  
 Spec. Reported : MS Integration Inj Volume : 1 ul  
 Acq. Method : D:\Chem32\1\data\2018\20181026\470\1-POS-3MIN-1.M  
 Analysis Method : D:\CHEM32\1\DATA\2018\20181026\470\1-POS-3MIN-1.M  
 Catalog No : HY-19730 Batch#19637 A-RP-314  
 Method Info : Mobile Phase: A: water(0.01%TFA) B:ACN(0.01%TFA)  
 Gradient: 5% to 95%B within 1.3 min  
 Flow Rate :1.8ml/min  
 Column :SunFire C18, 4.6\*50mm,3.5um A-RP-314  
 Oven Temperature : 45

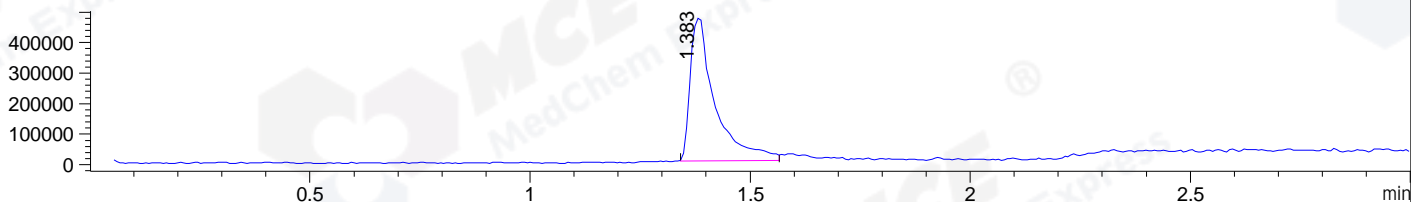
DAD1 B, Sig=214,4 Ref=off



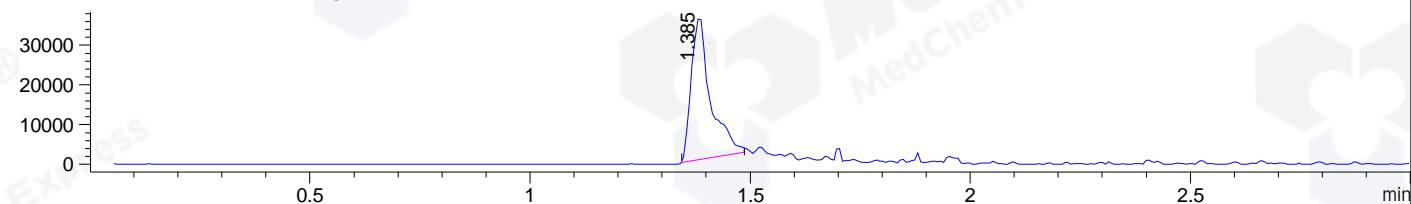
DAD1 C, Sig=254,4 Ref=off



MSD1 TIC, MS File ES-API, Pos, Scan, Frag: 70



Ion 487.6, MSD1 487.6, Target Mass 486.6 +H Positive, EIC=487.3:488.3



Integration Results for DAD1 B, Sig=214,4 Ref=off

RetTim	Width	Area	Height	Area%	MS (+)
1.35	0.04	2262.22	967.67	99.98	244
1.60	0.01	0.43	0.65	0.02	487

Integration Results for DAD1 C, Sig=254,4 Ref=off

RetTim	Width	Area	Height	Area%	MS (+)
1.35	0.04	1612.18	700.68	99.99	244
1.60	0.01	0.23	0.40	0.01	487

Integration Results for MSD1 TIC, MS File

RetTim	Width	Area	Height	Area%	MS (+)
1.38	0.06	1853060.63	469744.13	100.00	244

Ret. Time: 1.38

<<<< POSITIVE SPECTRA >>>>

ES-API Positive

