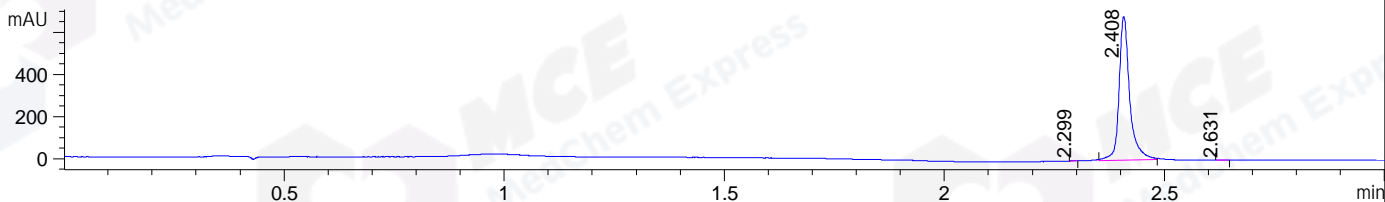
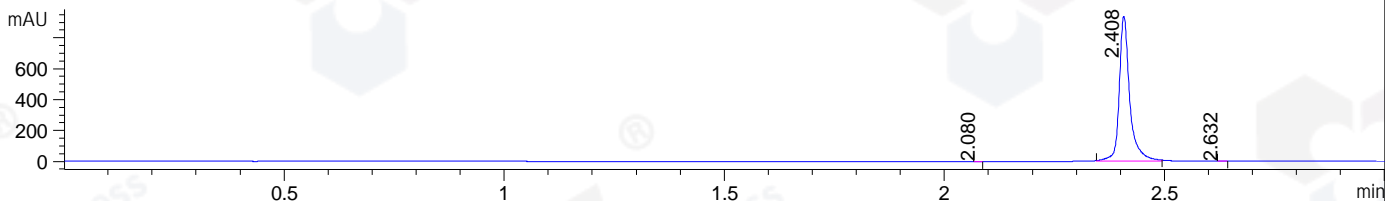


File ..\DATA\2019\20190302\553\CPK2019-221-20334.D Tgt Mass (CHM):  
 Injection Date : 2 Mar 19 2:12 pm +0800 Seq. Line : 45  
 Sample Name : CPK2019-221-20334 Location : P1-A-08  
 Acq. Operator : LQ\_1052 Inj : 1  
 Spec. Reported : MS Integration Inj Volume : 1 ul  
 Acq. Method : D:\Chem32\1\data\2019\20190302\553\1-POS-3MIN-1.M  
 Analysis Method : D:\CHEM32\1\DATA\2019\20190302\553\1-POS-3MIN-1.M  
 Catalog No : HY-19736 Batch#20334  
 Method Info : Mobile Phase: A: water(0.01%TFA) B:ACN(0.01%TFA)  
 Gradient: 5% to 95%B within 1.3 min  
 Flow Rate :1.8ml/min  
 Column :SunFire C18, 4.6\*50mm,3.5um A-RP-314  
 Oven Temperature : 45

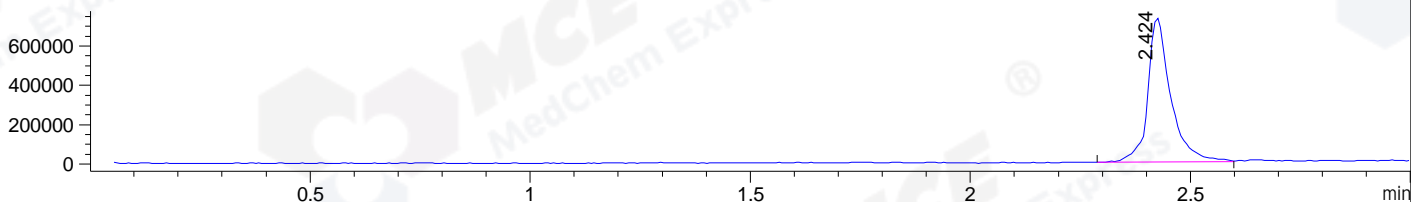
DAD1 B, Sig=214,4 Ref=off



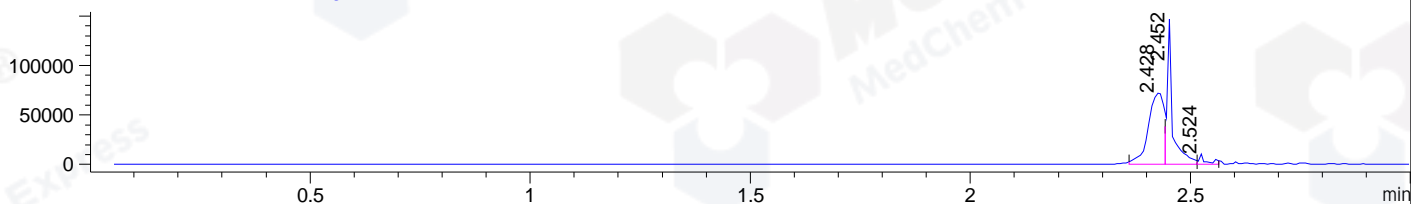
DAD1 C, Sig=254,4 Ref=off



MSD1 TIC, MS File ES-API, Pos, Scan, Frag: 70



Ion 365.3, MSD1 365.3, Target Mass 364.3 +H Positive, EIC=365:366



Integration Results for DAD1 B, Sig=214,4 Ref=off

RetTim	Width	Area	Height	Area%	MS (+)
2.30	0.02	0.34	0.33	0.03	142
2.41	0.02	1143.28	682.62	99.89	364
2.63	0.02	0.89	0.80	0.08	364

Integration Results for DAD1 C, Sig=254,4 Ref=off

RetTim	Width	Area	Height	Area%	MS (+)
2.08	0.01	0.25	0.33	0.02	142
2.41	0.02	1550.65	937.03	99.96	364
2.63	0.01	0.40	0.41	0.03	364

Integration Results for MSD1 TIC, MS File

RetTim	Width	Area	Height	Area%	MS (+)
2.42	0.05	2651218.50	732110.13	100.00	364

Ret. Time: 2.42

<<<< POSITIVE SPECTRA >>>>

ES-API Positive

