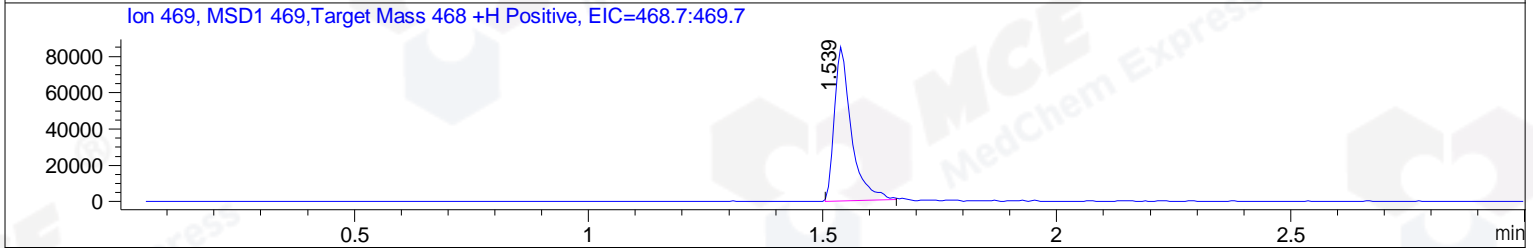
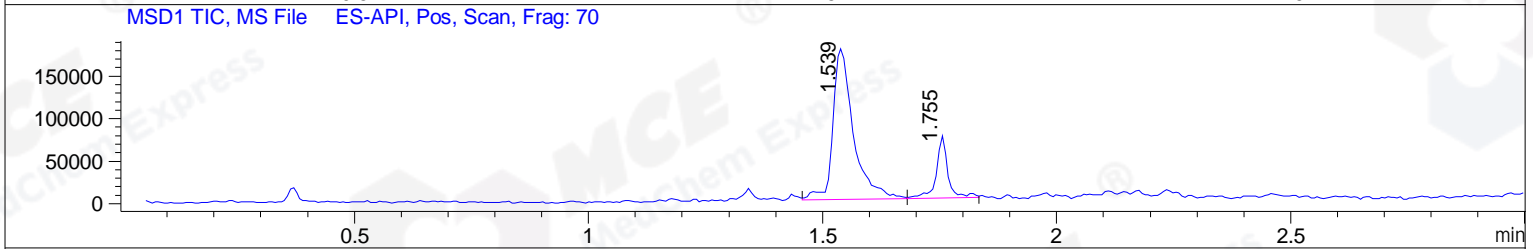
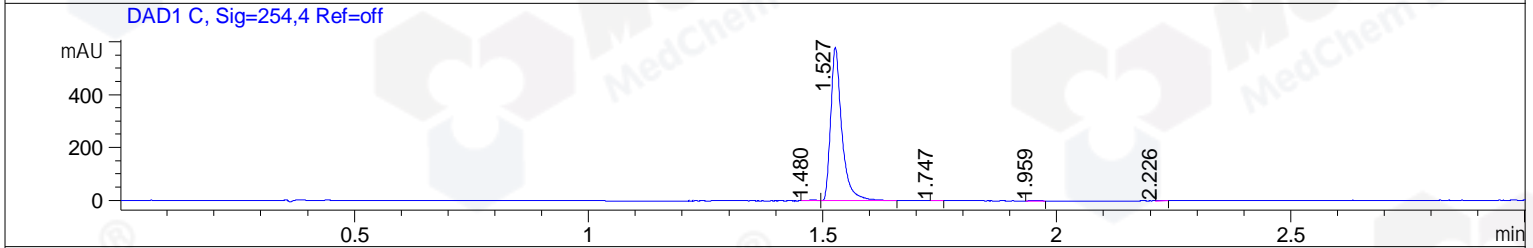
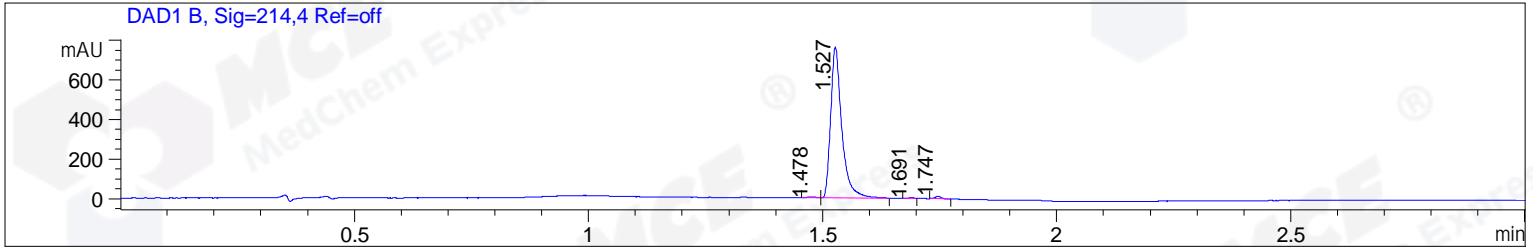


File ..1\DATA\2020\20200402\910\BIZ2020-402-WMX7.D Tgt Mass (CHM):
 Injection Date : 2 Apr 20 5:32 pm +0800 Seq. Line : 110
 Sample Name : BIZ2020-402-WMX7 Location : PL-E-02
 Acq. Operator : ZJ_1432 Inj : 1
 Spec. Reported : MS Integration Inj Volume : 1 ul
 Acq. Method : D:\Chem32\1\data\2020\20200402\910\1-POS-3MIN.M
 Analysis Method : D:\CHEM32\1\DATA\2020\20200402\910\1-POS-3MIN.M
 Catalog No : HY-19759 Batch#62378
 Method Info : Mobile Phase: A: water(0.01%TFA) B:ACN(0.01%TFA)
 Gradient: 5% to 95%B within 1.3 min
 Flow Rate :1.8ml/min
 Column :SunFire C18, 4.6*50mm,3.5um A-RP-433
 Oven Temperature : 45



Integration Results for DAD1 B, Sig=214,4 Ref=off

RetTim	Width	Area	Height	Area%	MS (+)
1.48	0.03	6.12	3.77	0.48	405
1.53	0.03	1264.22	762.56	98.48	469
1.69	0.01	2.27	2.90	0.18	469
1.75	0.01	11.12	12.66	0.87	301

Integration Results for DAD1 C, Sig=254,4 Ref=off

RetTim	Width	Area	Height	Area%	MS (+)
1.48	0.02	3.88	2.88	0.40	405
1.53	0.03	957.71	580.84	99.07	469
1.75	0.01	1.21	1.57	0.13	301
1.96	0.02	2.46	1.88	0.25	623
2.23	0.01	1.44	1.61	0.15	384

Integration Results for MSD1 TIC, MS File

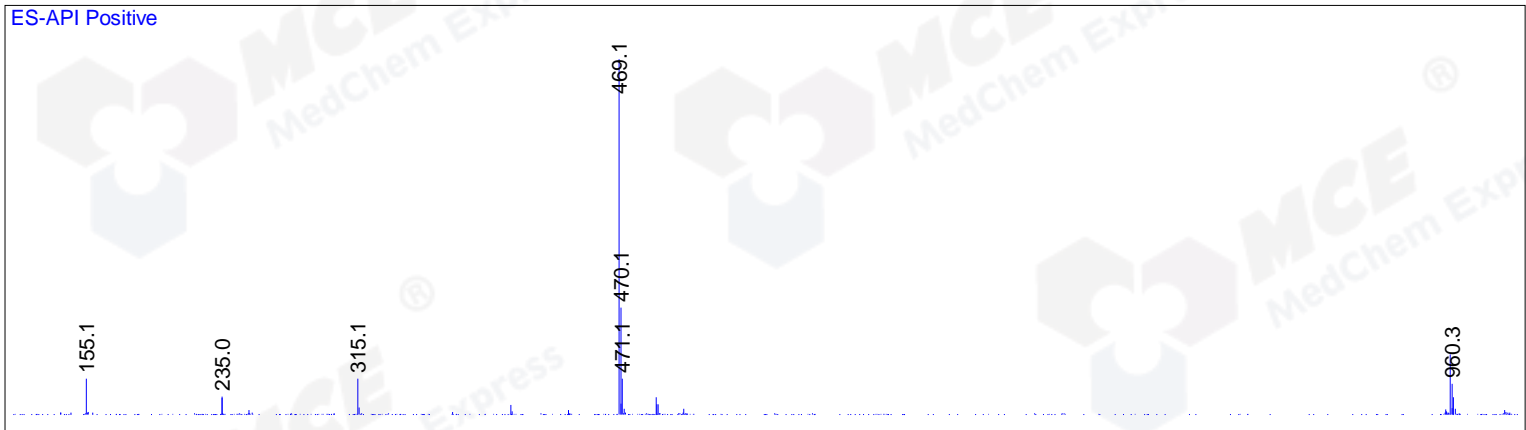
RetTim	Width	Area	Height	Area%	MS (+)
--------	-------	------	--------	-------	--------

1.54	0.04	543425.75	177131.16	81.12	469
1.76	0.03	126481.91	72836.28	18.88	301

Ret. Time: 1.54

<<<< POSITIVE SPECTRA >>>>

ES-API Positive



Ret. Time: 1.76

ES-API Positive

