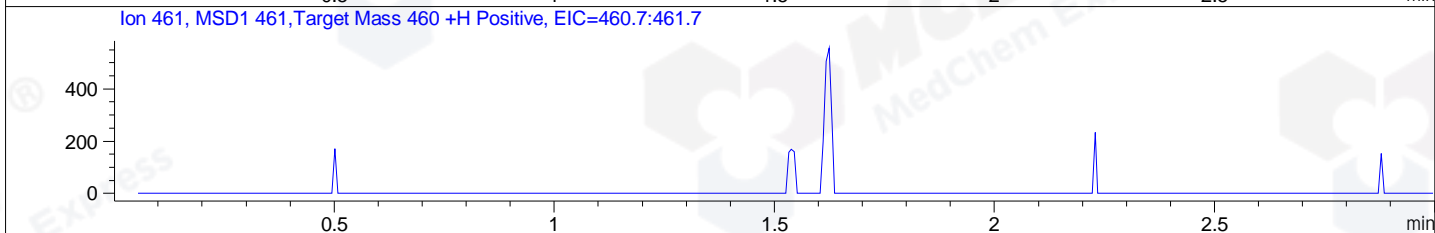
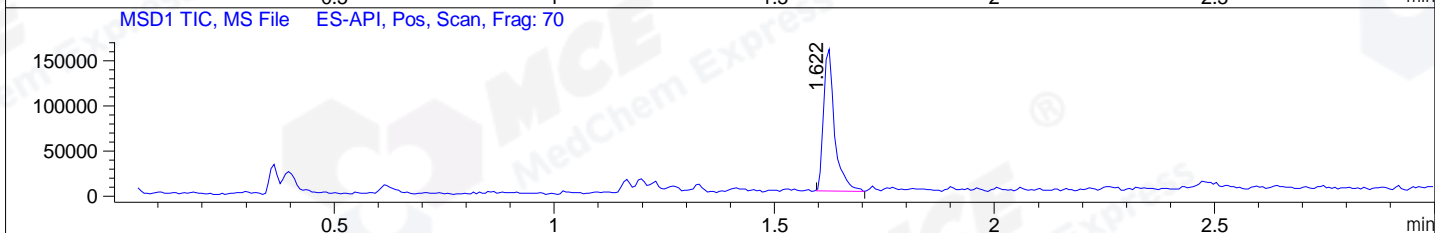
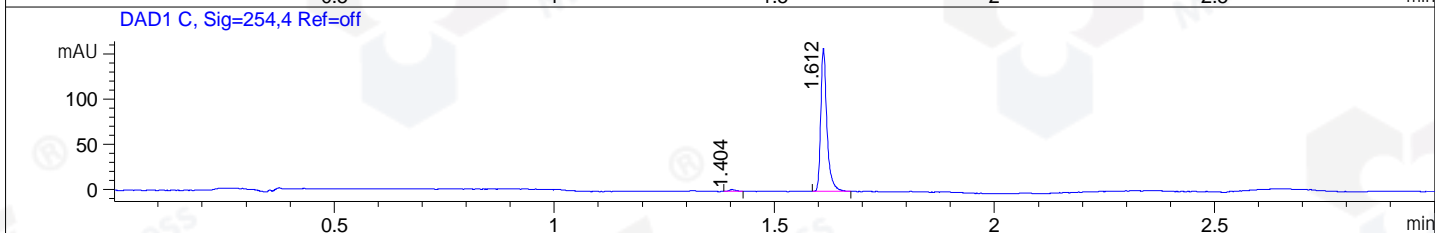
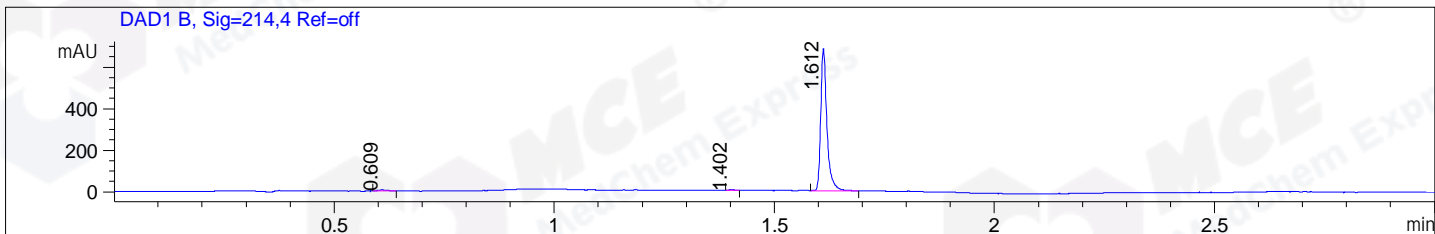


File ..DATA\2020\20200411\921\BIZ2020-409-CXL12.D Tgt Mass (CHM):
 Injection Date : 11 Apr 20 2:08 pm +0800 Seq. Line : 46
 Sample Name : BIZ2020-409-CXL12 Location : P1-E-09
 Acq. Operator : ZJ_1432 Inj : 1
 Spec. Reported : MS Integration Inj Volume : 0.4 ul
 Acq. Method : D:\Chem32\1\data\2020\20200411\921\1-POS-3MIN.M
 Analysis Method : D:\CHEM32\1\DATA\2020\20200411\921\1-POS-3MIN.M
 Catalog No : HY-19765 Batch#62690
 Method Info : Mobile Phase: A: water(0.01%TFA) B:ACN(0.01%TFA)
 Gradient: 5% to 95%B within 1.3 min
 Flow Rate :1.8ml/min
 Column :SunFire C18, 4.6*50mm,3.5um A-RP-433
 Oven Temperature : 45□



Integration Results for DAD1 B, Sig=214,4 Ref=off

RetTim	Width	Area	Height	Area%	MS (+)
0.61	0.02	8.55	5.79	1.25	122
1.40	0.01	3.26	4.11	0.48	130
1.61	0.02	671.01	686.34	98.27	443

Integration Results for DAD1 C, Sig=254,4 Ref=off

RetTim	Width	Area	Height	Area%	MS (+)
1.40	0.02	1.81	1.96	1.16	130
1.61	0.02	154.08	158.30	98.84	443

Integration Results for MSD1 TIC, MS File

RetTim	Width	Area	Height	Area%	MS (+)
1.62	0.03	272419.81	159618.88	100.00	443

Ret. Time: 1.62

<<<< POSITIVE SPECTRA >>>>

ES-API Positive

