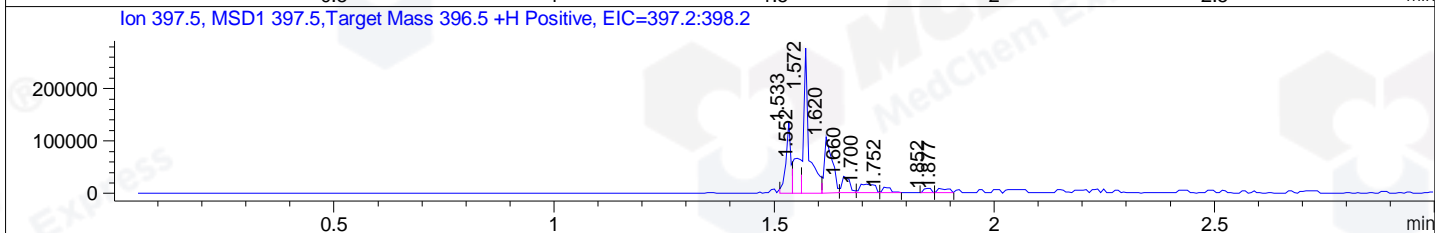
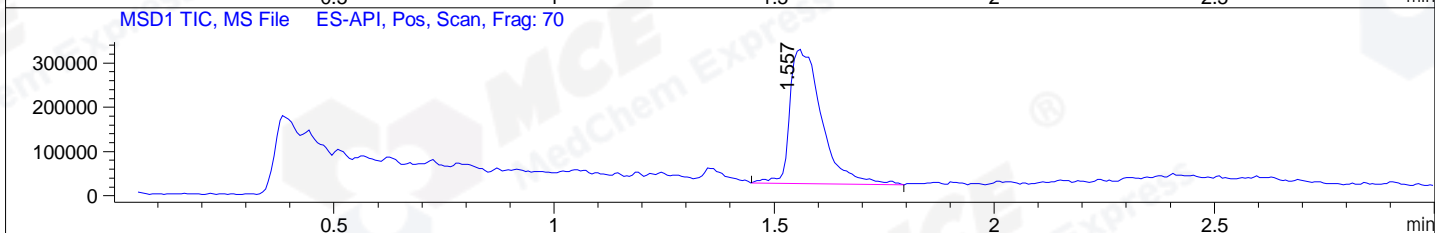
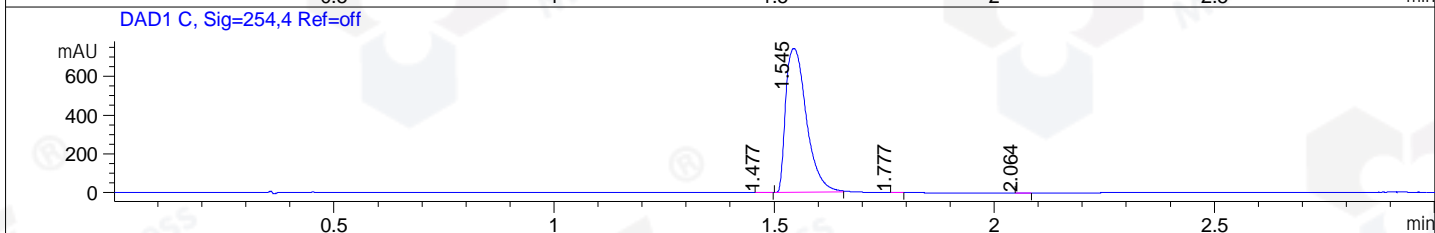
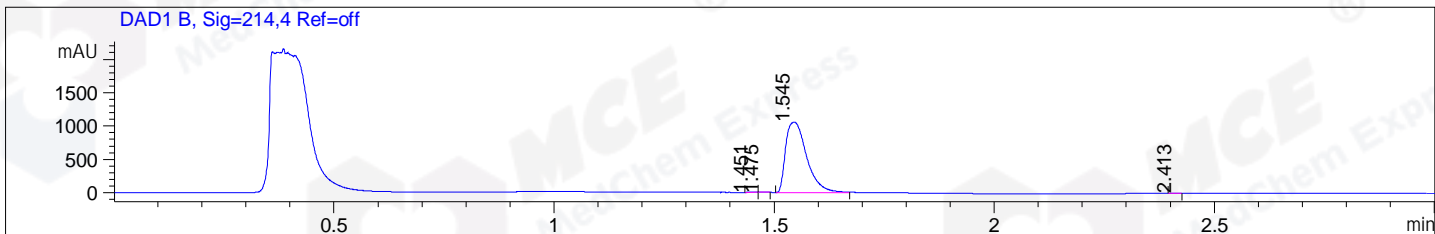


File ..DATA\2019\20190414\562\CPK2019-410-20835-.D Tgt Mass (CHM):  
 Injection Date : 14 Apr 19 4:55 pm +0800 Seq. Line : 26  
 Sample Name : CPK2019-410-20835 Location : P1-E-01  
 Acq. Operator : LQ\_1052 Inj : 1  
 Spec. Reported : MS Integration Inj Volume : 2 ul  
 Acq. Method : D:\Chem32\1\data\2019\20190414\562\1-POS-3MIN-1.M  
 Analysis Method : D:\CHEM32\1\DATA\2019\20190414\562\1-POS-3MIN-1.M  
 Catalog No : HY-19795 Batch# 20835 BY DMSO  
 Method Info : Mobile Phase: A: water(0.01%TFA) B:ACN(0.01%TFA)  
 Gradient: 5% to 95%B within 1.3 min  
 Flow Rate :1.8ml/min  
 Column :SunFire C18, 4.6\*50mm,3.5um A-RP-314  
 Oven Temperature : 45□



Integration Results for DAD1 B, Sig=214,4 Ref=off

RetTim	Width	Area	Height	Area%	MS (+)
1.45	0.02	3.92	3.62	0.11	157
1.47	0.02	3.13	2.92	0.09	157
1.55	0.05	3479.96	1056.20	99.76	397
2.41	0.02	1.48	1.37	0.04	157

Integration Results for DAD1 C, Sig=254,4 Ref=off

RetTim	Width	Area	Height	Area%	MS (+)
1.48	0.02	2.13	1.30	0.09	157
1.54	0.05	2424.02	742.47	99.83	397
1.78	0.02	0.70	0.57	0.03	157
2.06	0.02	1.33	1.18	0.05	157

Integration Results for MSD1 TIC, MS File

RetTim	Width	Area	Height	Area%	MS (+)
1.56	0.07	1523302.38	303862.81	100.00	397

Ret. Time: 1.56

<<<< POSITIVE SPECTRA >>>>

ES-API Positive

