

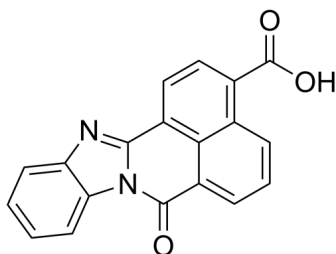
## STO-609

Cat. No.: HY-19805  
Batch No.: 123916  
CAS No.: 52029-86-4  
Molecular Formula: C<sub>19</sub>H<sub>10</sub>N<sub>2</sub>O<sub>3</sub>

## ANALYTICAL DATA

Theoretical: C(72.61%)、H(3.21%)、N(8.91%)  
Result: C(69.05%)、H(3.49%)、N(8.21%)

Chemical Structure:



Caution: Product has not been fully validated for medical applications. For research use only.

Tel: 609-228-6898

Fax: 609-228-5909

E-mail: [tech@MedChemExpress.com](mailto:tech@MedChemExpress.com)

Address: 1 Deer Park Dr, Suite Q, Monmouth Junction, NJ 08852, USA