

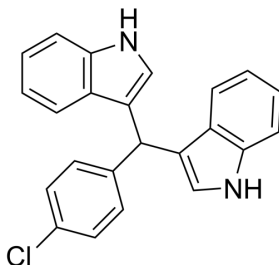
C-DIM12

Cat. No.: HY-19808
 CAS No.: 178946-89-9
 Batch No.: 280580
 Chemical Name: 1H-Indole, 3,3'-[(4-chlorophenyl)methylene]bis-

PHYSICAL AND CHEMICAL PROPERTIES

Molecular Formula: $C_{23}H_{17}ClN_2$
 Molecular Weight: 356.85
 Storage: 4°C, protect from light
 * In solvent : -80°C, 6 months; -20°C, 1 month (protect from light)

Chemical Structure:



ANALYTICAL DATA

Appearance: Light yellow to brown (Solid)
 1H NMR Spectrum: Consistent with structure
 LCMS: Consistent with structure
 Purity (HPLC): 98.32%
 Conclusion: The product has been tested and complies with the given specifications.

Caution: Product has not been fully validated for medical applications. For research use only.

Tel: 609-228-6898

Fax: 609-228-5909

E-mail: tech@MedChemExpress.com

Address: 1 Deer Park Dr, Suite Q, Monmouth Junction, NJ 08852, USA