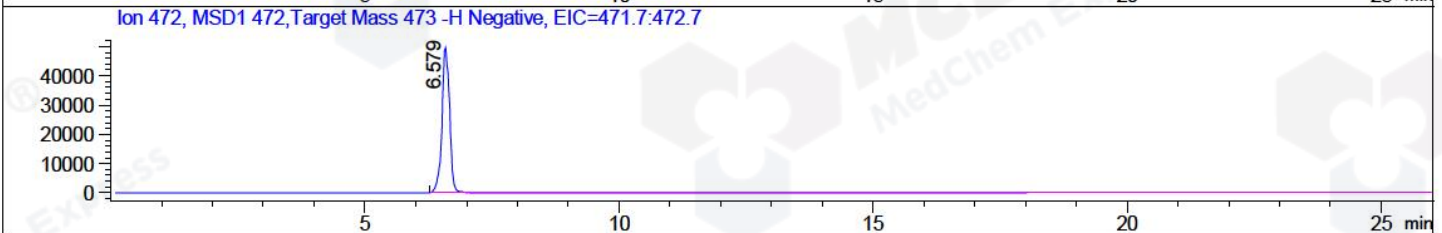
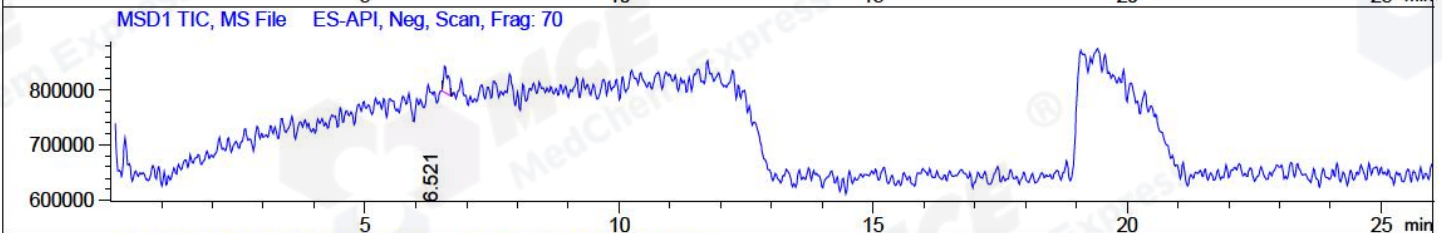
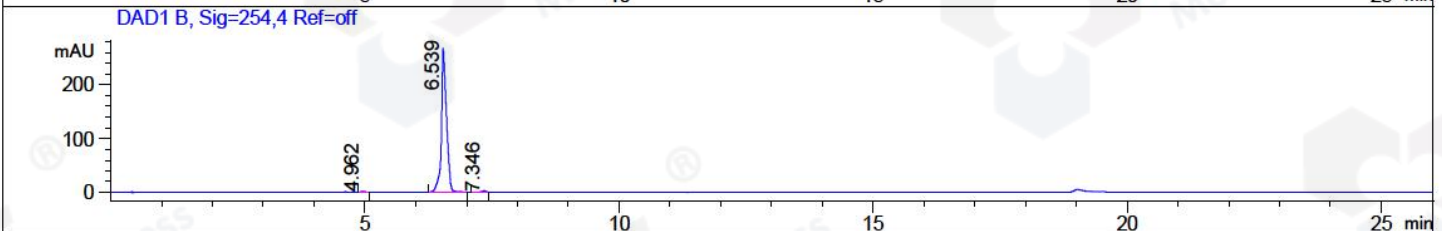
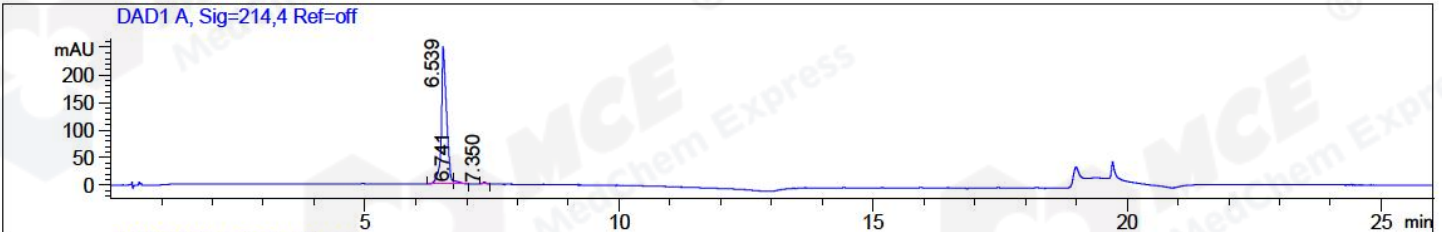


File ..18\20180522\20180522-1\BIZ2018-514-CXL2-2.D Tgt Mass (CHM):
 Injection Date : 22 May 18 11:16 pm +0800 Seq. Line : 109
 Sample Name : BIZ2018-514-CXL2-2 Location : P2-D-02
 Acq. Operator : SYSTEM Inj : 1
 Spec. Reported : MS Integration Inj Volume : 1 ul
 Acq. Method : D:\LCMS03\Data\2018\20180522\20180522-1\HY-19819.M
 Analysis Method : D:\LCMS03\Data\2018\20180522\20180522-1\HY-19819.M
 Catalog No : HY-19819 Batch#30165
 Method Info : Mobile Phase: A: water (0.01%TFA) B:ACN (0.01%TFA)
 Flow Rate :1.8ml/min
 Column :SunFire C18, 4.6*50mm,3.5um A-RP-186
 Oven Temperature : 45C



Integration Results for DAD1 A, Sig=214,4 Ref=off

RetTim	Width	Area	Height	Area%	MS (-)
6.54	0.12	1770.83	250.81	96.92	227
6.74	0.13	43.35	5.63	2.37	227
7.35	0.05	12.90	3.14	0.71	227

Integration Results for DAD1 B, Sig=254,4 Ref=off

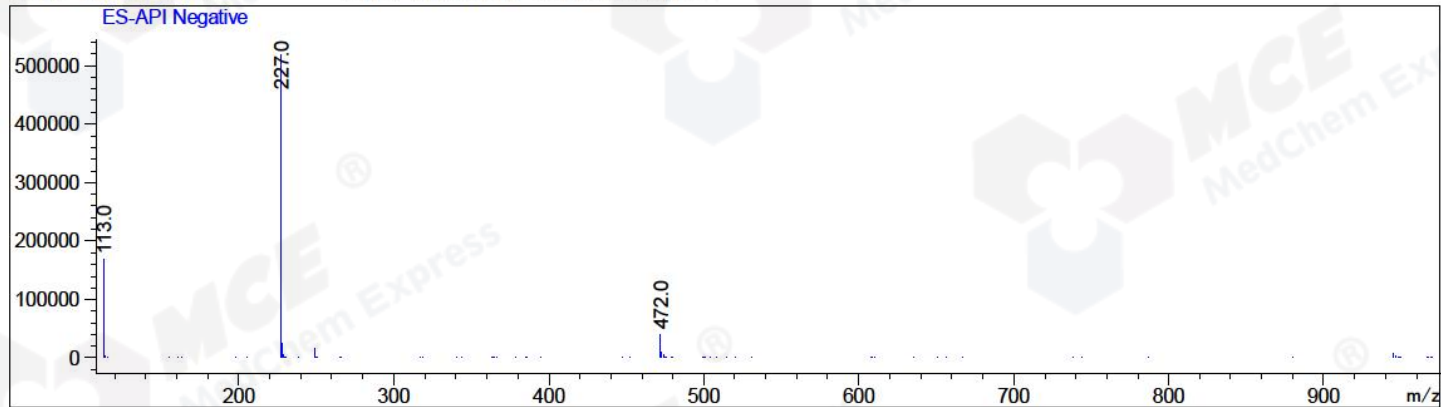
RetTim	Width	Area	Height	Area%	MS (-)
4.96	0.05	7.41	1.84	0.39	227
6.54	0.12	1897.46	268.86	98.90	227
7.35	0.08	13.73	2.72	0.72	227

Integration Results for MSD1 TIC, MS File

RetTim	Width	Area	Height	Area%	MS (-)
6.52	0.11	312947.56	5133.16	100.00	227

Ret. Time: 6.52

<<<< NEGATIVE SPECTRA >>>>



*** End of Report ***