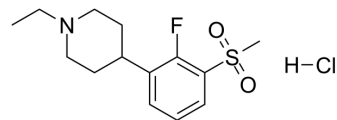


## Piperidine-MO-1

Cat. No.:	HY-19845A
CAS No.:	871351-61-0
Molecular Formula:	C <sub>14</sub> H <sub>21</sub> ClFNO <sub>2</sub> S
Molecular Weight:	321.84
Target:	Dopamine Receptor
Pathway:	GPCR/G Protein; Neuronal Signaling
Storage:	Please store the product under the recommended conditions in the Certificate of Analysis.



### BIOLOGICAL ACTIVITY

Description	Piperidine-MO-1 is a modulator of dopamine receptor extracted from patent WO/2005/121087A1, compound example 2; exhibits an ED <sub>50</sub> of 68 μmol/kg on increase of DOPAC in the rat striatum.
IC <sub>50</sub> & Target	ED50: 68 μmol/kg (increase of DOPAC) <sup>[1]</sup>

### REFERENCES

[1]. WO/2005/121087A1

**Caution: Product has not been fully validated for medical applications. For research use only.**

Tel: 609-228-6898

Fax: 609-228-5909

E-mail: tech@MedChemExpress.com

Address: 1 Deer Park Dr, Suite Q, Monmouth Junction, NJ 08852, USA