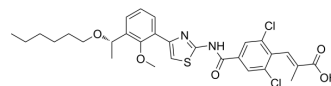


Lusutrombopag

Cat. No.:	HY-19883		
CAS No.:	1110766-97-6		
Molecular Formula:	C ₂₉ H ₃₂ Cl ₂ N ₂ O ₅ S		
Molecular Weight:	591.55		
Target:	Thrombopoietin Receptor		
Pathway:	Immunology/Inflammation		
Storage:	Powder	-20°C	3 years
		4°C	2 years
	In solvent	-80°C	2 years
		-20°C	1 year



SOLVENT & SOLUBILITY

In Vitro	DMSO : 50 mg/mL (84.52 mM; Need ultrasonic)			
		Solvent Concentration	Mass	
			1 mg	5 mg
	Preparing Stock Solutions		10 mg	
	1 mM	1.6905 mL	8.4524 mL	16.9047 mL
	5 mM	0.3381 mL	1.6905 mL	3.3809 mL
	10 mM	0.1690 mL	0.8452 mL	1.6905 mL
Please refer to the solubility information to select the appropriate solvent.				
In Vivo	1. Add each solvent one by one: 10% DMSO >> 40% PEG300 >> 5% Tween-80 >> 45% saline Solubility: ≥ 2.5 mg/mL (4.23 mM); Clear solution			
	2. Add each solvent one by one: 10% DMSO >> 90% (20% SBE-β-CD in saline) Solubility: 2.5 mg/mL (4.23 mM); Suspended solution; Need ultrasonic			
	3. Add each solvent one by one: 10% DMSO >> 90% corn oil Solubility: ≥ 2.5 mg/mL (4.23 mM); Clear solution			

BIOLOGICAL ACTIVITY

Description	Lusutrombopag is an orally bioavailable thrombopoietin (TPO) receptor agonist, used for treatment of chronic liver disease.
In Vitro	Lusutrombopag acts selectively on the human TPO receptor and activates signal transduction pathways that promote the proliferation and differentiation of bone marrow cells into megakaryocytes, thereby increasing platelet levels ^[1] . MCE has not independently confirmed the accuracy of these methods. They are for reference only.

CUSTOMER VALIDATION

- J Thromb Haemost. 2022 May 27.
- ACS Infect Dis. 2024 Apr 12;10(4):1327-1338.

See more customer validations on www.MedChemExpress.com

REFERENCES

[1]. Kim ES, et al. Lusutrombopag: First Global Approval. Drugs. 2016 Jan;76(1):155-8.

Caution: Product has not been fully validated for medical applications. For research use only.

Tel: 609-228-6898

Fax: 609-228-5909

E-mail: tech@MedChemExpress.com

Address: 1 Deer Park Dr, Suite Q, Monmouth Junction, NJ 08852, USA