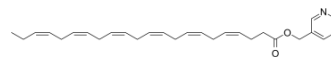


## F 16915

Cat. No.:	HY-19886
CAS No.:	92510-91-3
Molecular Formula:	C <sub>28</sub> H <sub>37</sub> NO <sub>2</sub>
Molecular Weight:	419.6
Target:	Others
Pathway:	Others
Storage:	-20°C, protect from light * In solvent : -80°C, 6 months; -20°C, 1 month (protect from light)



### BIOLOGICAL ACTIVITY

<b>Description</b>	F 16915, a Docosahexaenoic Acid (DHA, HY-B2167) derivative, is a potent pro-drug of DHA. F 16915 can prevent heart failure-induced atrial fibrillation <sup>[1]</sup> .								
<b>In Vivo</b>	<p>F 16915 (100 mg/kg; daily oral gavage for 2 months) reduces marked dilation of the left atrial (LA) cavity and the steep decline of left ventricular (LV) contractile function occurring 2 months after infarction and reperfusion in rats<sup>[1]</sup>.</p> <p>F 16915 (1-5 g/day for 4 weeks) significantly reduces the infarct size and prevents the left ventricular free wall thinning<sup>[1]</sup>. MCE has not independently confirmed the accuracy of these methods. They are for reference only.</p> <table border="1" style="width: 100%; border-collapse: collapse;"> <tr> <td style="width: 30%;">Animal Model:</td> <td>Male Sprague-Dawley rats (220-300 g) with heart failure induced by occlusion of left descending coronary artery and 2 months reperfusion<sup>[1]</sup></td> </tr> <tr> <td>Dosage:</td> <td>100 mg/kg</td> </tr> <tr> <td>Administration:</td> <td>Daily oral gavage</td> </tr> <tr> <td>Result:</td> <td>                     Reduced the infarct size.                      Prevented the left ventricular free wall thinning.                      Reduced the de-phosphorylation of connexin43 from atria tissue.                 </td> </tr> </table>	Animal Model:	Male Sprague-Dawley rats (220-300 g) with heart failure induced by occlusion of left descending coronary artery and 2 months reperfusion <sup>[1]</sup>	Dosage:	100 mg/kg	Administration:	Daily oral gavage	Result:	Reduced the infarct size. Prevented the left ventricular free wall thinning. Reduced the de-phosphorylation of connexin43 from atria tissue.
Animal Model:	Male Sprague-Dawley rats (220-300 g) with heart failure induced by occlusion of left descending coronary artery and 2 months reperfusion <sup>[1]</sup>								
Dosage:	100 mg/kg								
Administration:	Daily oral gavage								
Result:	Reduced the infarct size. Prevented the left ventricular free wall thinning. Reduced the de-phosphorylation of connexin43 from atria tissue.								

### REFERENCES

[1]. Le Grand B, et al. F 16915 prevents heart failure-induced atrial fibrillation: a promising new drug as upstream therapy. *Naunyn Schmiedebergs Arch Pharmacol.* 2014 Jul;387(7):667-77.

---

**Caution: Product has not been fully validated for medical applications. For research use only.**

Tel: 609-228-6898

Fax: 609-228-5909

E-mail: [tech@MedChemExpress.com](mailto:tech@MedChemExpress.com)

Address: 1 Deer Park Dr, Suite Q, Monmouth Junction, NJ 08852, USA