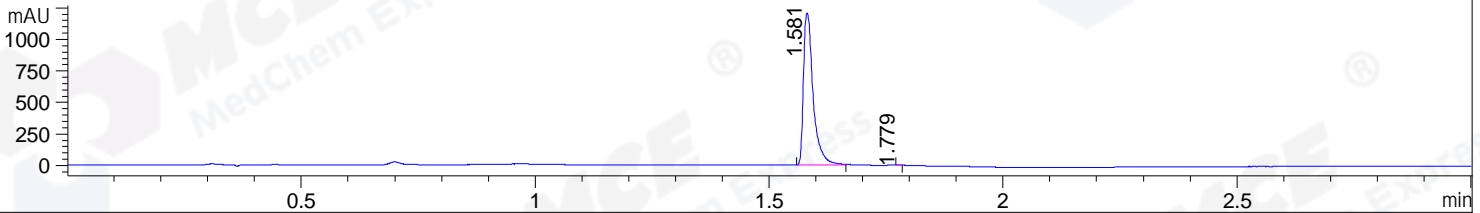
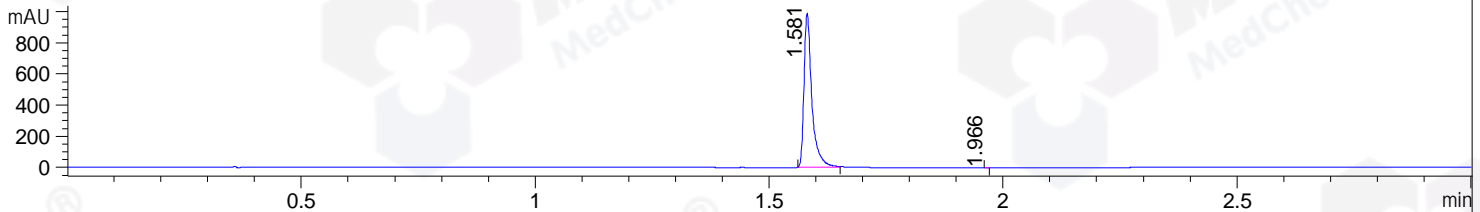


File ..\DATA\2019\20190513\581\CPK2019-510-22337.D Tgt Mass (CHM):  
 Injection Date : 13 May 19 11:58 am +0800 Seq. Line : 34  
 Sample Name : CPK2019-510-22337 Location : PL-C-09  
 Acq. Operator : LQ\_1052 Inj : 1  
 Spec. Reported : MS Integration Inj Volume : 1 ul  
 Acq. Method : D:\Chem32\1\data\2019\20190513\581\1-POS-3MIN.M  
 Analysis Method : D:\CHEM32\1\DATA\2019\20190513\581\1-POS-3MIN.M  
 Catalog No : HY-19914 Batch#22337  
 Method Info : Mobile Phase: A: water(0.01%TFA) B:ACN(0.01%TFA)  
 Gradient: 5% to 95%B within 1.3 min  
 Flow Rate :1.8ml/min  
 Column :SunFire C18, 4.6\*50mm,3.5um A-RP-322  
 Oven Temperature : 45

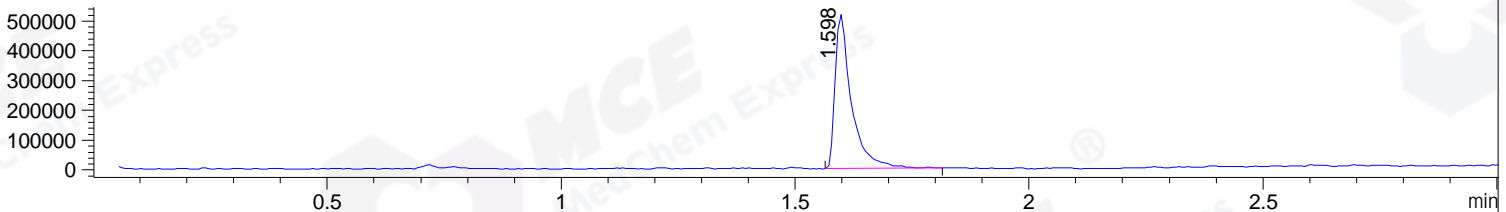
DAD1 B, Sig=214,4 Ref=off



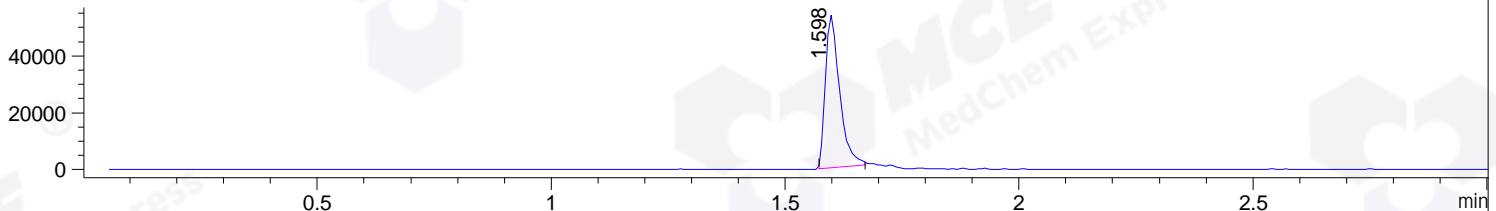
DAD1 C, Sig=254,4 Ref=off



MSD1 TIC, MS File ES-API, Pos, Scan, Frag: 70



Ion 462.9, MSD1 462.9, Target Mass 461.9 +H Positive, EIC=462.6:463.6



Integration Results for DAD1 B, Sig=214,4 Ref=off

| RetTim | Width | Area    | Height  | Area% | MS (+) |
|--------|-------|---------|---------|-------|--------|
| 1.58   | 0.02  | 1733.88 | 1206.54 | 99.97 | 462    |
| 1.78   | 0.01  | 0.46    | 0.87    | 0.03  | 462    |

Integration Results for DAD1 C, Sig=254,4 Ref=off

| RetTim | Width | Area    | Height | Area% | MS (+) |
|--------|-------|---------|--------|-------|--------|
| 1.58   | 0.02  | 1157.58 | 989.14 | 99.99 | 462    |
| 1.97   | 0.01  | 0.08    | 0.18   | 0.01  | ND     |

Integration Results for MSD1 TIC, MS File

| RetTim | Width | Area       | Height    | Area%  | MS (+) |
|--------|-------|------------|-----------|--------|--------|
| 1.60   | 0.04  | 1255980.25 | 517573.97 | 100.00 | 462    |

Ret. Time: 1.60

<<<< POSITIVE SPECTRA >>>>

ES-API Positive

