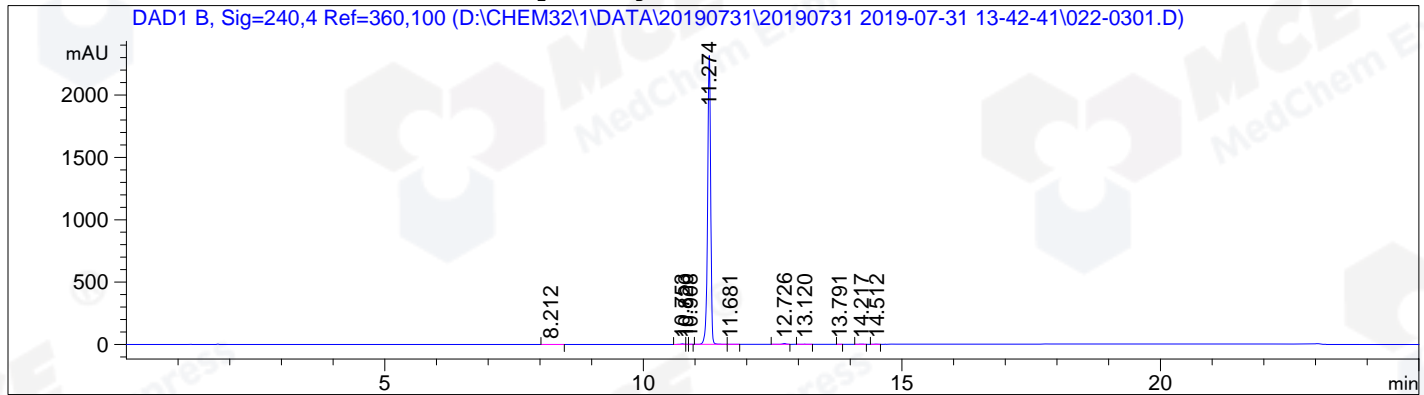


```

=====
Acq. Operator   : ZQQ                               Seq. Line :    3
Acq. Instrument : HPLC-12                           Location  : Vial 22
Injection Date  : 7/31/2019 14:40:47                Inj       :    1
                                                    Inj Volume: 5.0 µl
Acq. Method     : D:\CHEM32\1\DATA\20190731\20190731 2019-07-31 13-42-41\LD701_1-H01P01 (RP-HPLC)
                                                    .M
Last changed    : 7/30/2019 14:33:01 by ZQQ
Analysis Method : D:\CHEM32\1\METHOD\10-90 214NM.M
Last changed    : 7/31/2019 15:10:01 by ZQQ
                  (modified after loading)
Catalog No     : HY-19939S Batch#44286
                  A-RP-427
    
```

Additional Info : Peak(s) manually integrated



Area Percent Report

```

Sorted By      :      Signal
Multiplier:    :      1.0000
Dilution:      :      1.0000
Use Multiplier & Dilution Factor with ISTDs
    
```

Signal 1: DAD1 B, Sig=240,4 Ref=360,100

Peak #	RetTime [min]	Type	Width [min]	Area [mAU*s]	Height [mAU]	Area %
1	8.212	BB	0.0825	2.57373	4.51288e-1	0.0268
2	10.753	MF	0.0676	16.35474	4.03368	0.1704
3	10.820	FM	0.0332	5.81994e-1	2.92118e-1	6.064e-3
4	10.908	FM	0.0502	4.69275e-1	1.55756e-1	4.889e-3
5	11.274	BV	0.0641	9537.70898	2315.64893	99.3696
6	11.681	VB	0.0861	3.60118	5.99281e-1	0.0375
7	12.726	BB	0.0670	29.62281	6.77965	0.3086
8	13.120	BB	0.0812	3.19991	5.90828e-1	0.0333
9	13.791	MM	0.0609	3.01922e-1	8.26569e-2	3.146e-3
10	14.217	BB	0.0677	2.91634	6.58027e-1	0.0304
11	14.512	MM	0.0797	8.89315e-1	1.85873e-1	9.265e-3

Totals : 9598.22020 2329.47809

\*\*\* End of Report \*\*\*