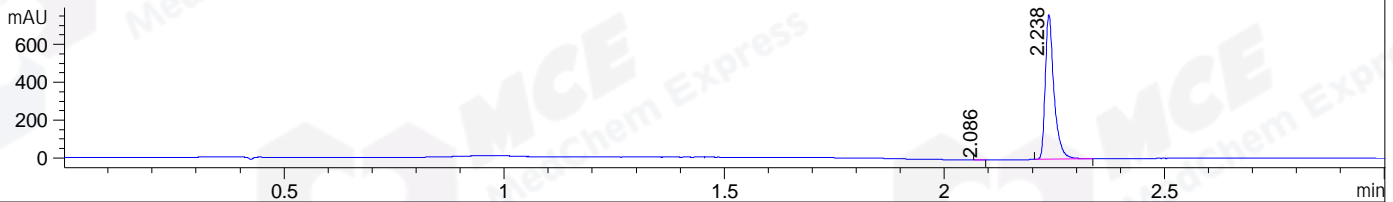
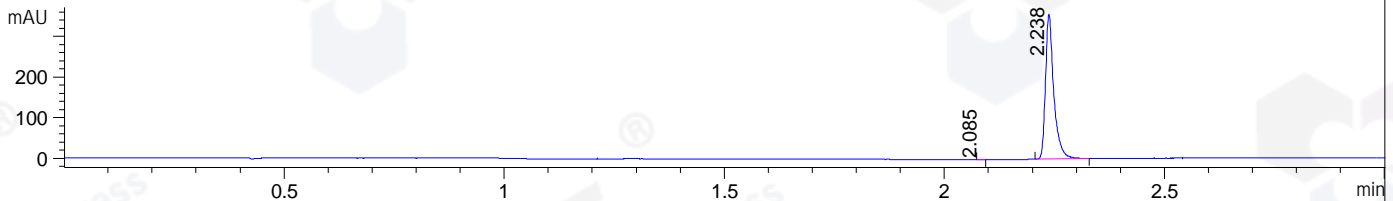


File ..DATA\2019\20191112\759\CPK2019-N08-19955-.D Tgt Mass (CHM):
Injection Date : 12 Nov 19 4:06 pm +0800 Seq. Line : 87
Sample Name : CPK2019-N08-19955 Location : P1-E-01
Acq. Operator : ZJ_1432 Inj : 1
Spec. Reported : MS Integration Inj Volume : 0.6 ul
Acq. Method : D:\Chem32\1\data\2019\20191112\759\1-POS-3MIN.M
Analysis Method : D:\CHEM32\1\DATA\2019\20191112\759\1-POS-3MIN.M
Catalog No : HY-19952 Batch#19955
Method Info : Mobile Phase: A: water(0.01%TFA) B:ACN(0.01%TFA)
Gradient: 5% to 95%B within 1.3 min
Flow Rate :1.8ml/min
Column :SunFire C18, 4.6*50mm,3.5um A-RP-433
Oven Temperature : 45□

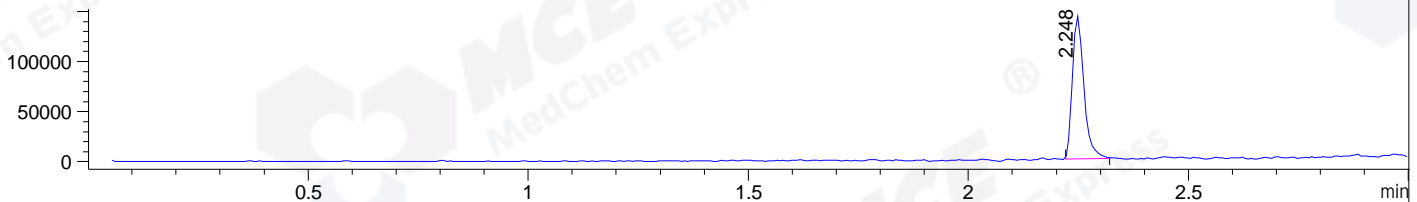
DAD1 B, Sig=214,4 Ref=off



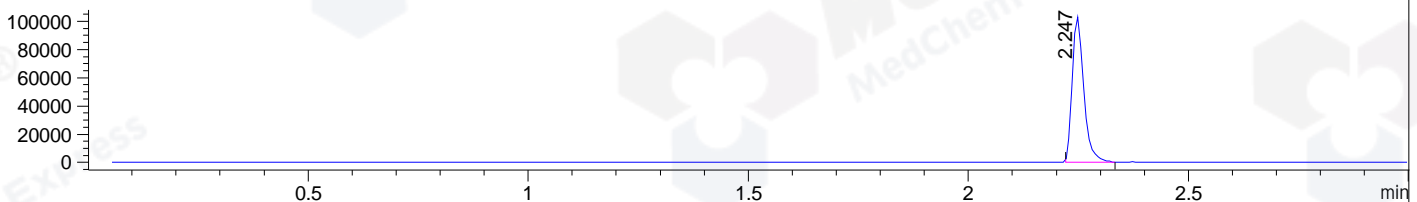
DAD1 C, Sig=254,4 Ref=off



MSD1 TIC, MS File ES-API, Pos, Scan, Frag: 70



Ion 382, MSD1 382, Target Mass 381 +H Positive, EIC=381.7:382.7



Integration Results for DAD1 B, Sig=214,4 Ref=off

RetTim	Width	Area	Height	Area%	MS (+)
2.09	0.02	0.64	0.67	0.06	ND
2.24	0.02	1056.31	764.97	99.94	382

Integration Results for DAD1 C, Sig=254,4 Ref=off

RetTim	Width	Area	Height	Area%	MS (+)
2.08	0.01	0.20	0.29	0.04	ND
2.24	0.02	468.14	357.24	99.96	382

Integration Results for MSD1 TIC, MS File

RetTim	Width	Area	Height	Area%	MS (+)
2.25	0.03	255924.39	142594.97	100.00	382

Ret. Time: 2.25

<<<< POSITIVE SPECTRA >>>>

ES-API Positive

