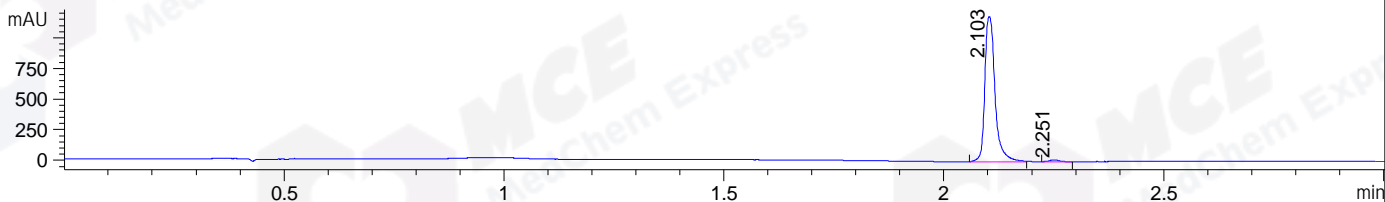
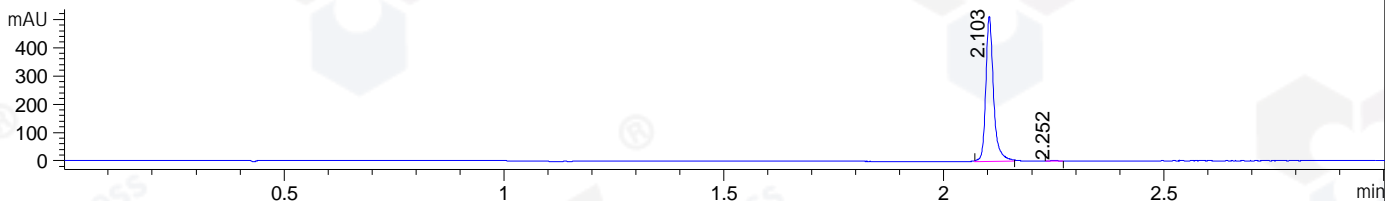


File ..\DATA\2019\20190213\552\CPK2019-213-19982.D Tgt Mass (CHM):
 Injection Date : 13 Feb 19 11:55 am +0800 Seq. Line : 34
 Sample Name : CPK2019-213-19982 Location : P1-D-05
 Acq. Operator : LQ_1052 Inj : 1
 Spec. Reported : MS Integration Inj Volume : 1 ul
 Acq. Method : D:\Chem32\1\data\2019\20190213\552\1-POS-3MIN-1.M
 Analysis Method : D:\CHEM32\1\DATA\2019\20190213\552\1-POS-3MIN-1.M
 Catalog No : HY-19958 Batch#199821
 Method Info : Mobile Phase: A: water(0.01%TFA) B:ACN(0.01%TFA)
 Gradient: 5% to 95%B within 1.3 min
 Flow Rate :1.8ml/min
 Column :SunFire C18, 4.6*50mm,3.5um A-RP-314
 Oven Temperature : 45

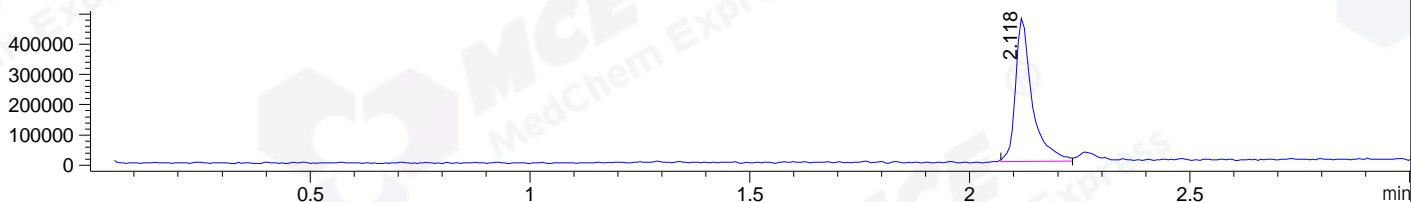
DAD1 B, Sig=214,4 Ref=off



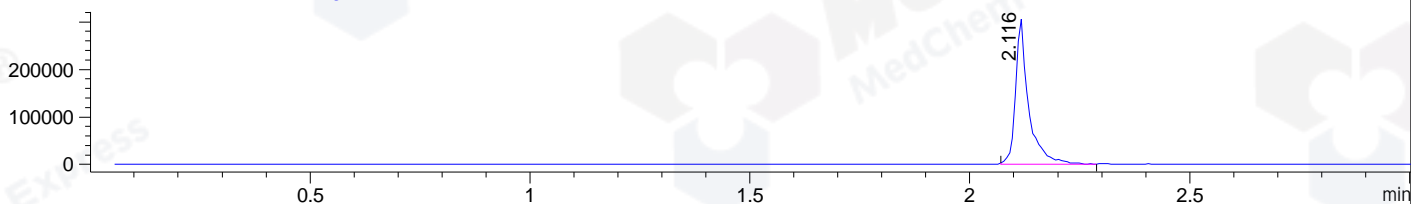
DAD1 C, Sig=254,4 Ref=off



MSD1 TIC, MS File ES-API, Pos, Scan, Frag: 70



Ion 352.4, MSD1 352.4, Target Mass 351.4 +H Positive, EIC=352.1:353.1



Integration Results for DAD1 B, Sig=214,4 Ref=off

RetTim	Width	Area	Height	Area%	MS (+)
2.10	0.03	1922.97	1187.48	98.86	352
2.25	0.02	22.11	15.47	1.14	564

Integration Results for DAD1 C, Sig=254,4 Ref=off

RetTim	Width	Area	Height	Area%	MS (+)
2.10	0.02	629.53	513.09	99.55	352
2.25	0.02	2.82	2.26	0.45	564

Integration Results for MSD1 TIC, MS File

RetTim	Width	Area	Height	Area%	MS (+)
2.12	0.04	1251246.00	477388.25	100.00	352

Ret. Time: 2.12

<<<< POSITIVE SPECTRA >>>>

ES-API Positive

