

File ..\DATA\2019\20190131\562\CPK2019-131-19945.D Tgt Mass (CHM):

Injection Date : 31 Jan 19 4:55 pm +0800 Seq. Line : 2

Sample Name : CPK2019-131-19945 Location : PL-A-04

Acq. Operator : LQ_1052 Inj : 1

Spec. Reported : MS Integration Inj Volume : 1 ul

Acq. Method : D:\Chem32\1\data\2019\20190131\562\1-POS-3MIN-1.M

Analysis Method : D:\CHEM32\1\DATA\2019\20190131\562\1-POS-3MIN-1.M

Catalog No : HY-19961 Batch#19945

Method Info : Mobile Phase: A: water(0.01%TFA) B:ACN(0.01%TFA)

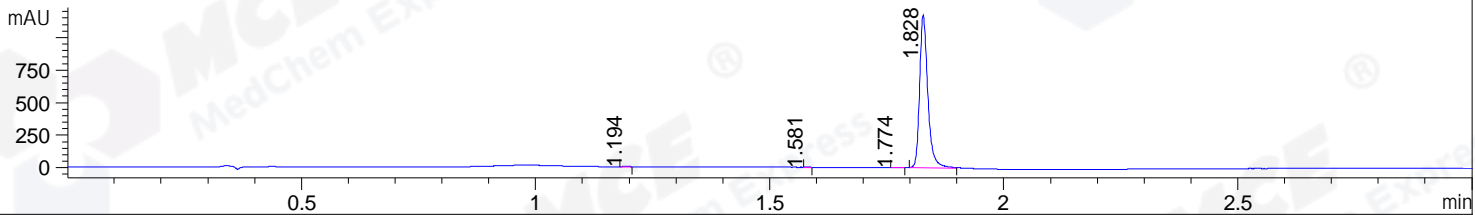
Gradient: 5% to 95%B within 1.3 min

Flow Rate :1.8ml/min

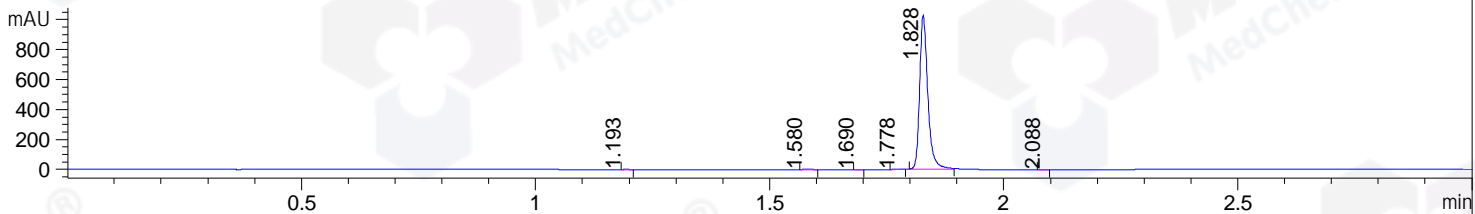
Column :SunFire C18, 4.6*50mm,3.5um A-RP-314

Oven Temperature : 45

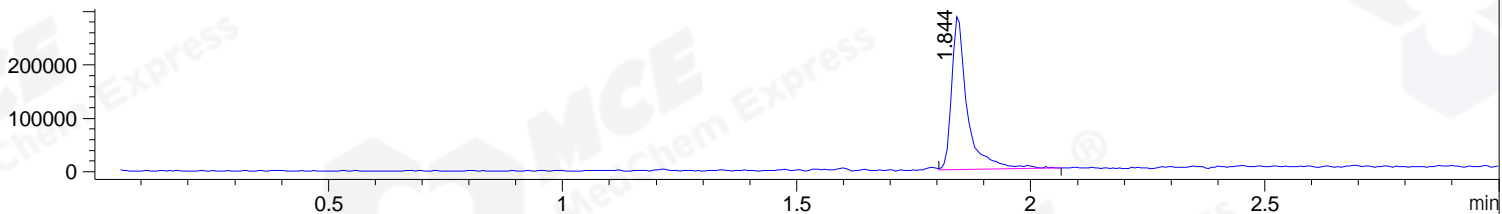
DAD1 B, Sig=214,4 Ref=off



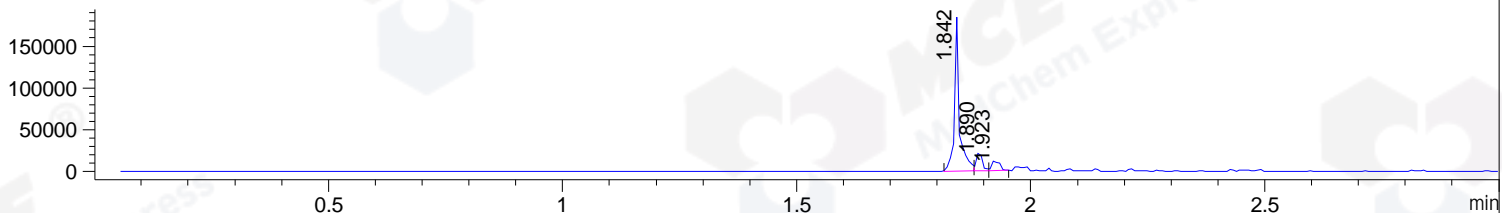
DAD1 C, Sig=254,4 Ref=off



MSD1 TIC, MS File ES-API, Pos, Scan, Frag: 70



Ion 480.5, MSD1 480.5, Target Mass 479.5 +H Positive, EIC=480.2:481.2



Integration Results for DAD1 B, Sig=214,4 Ref=off

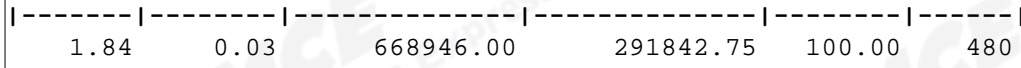
RetTim	Width	Area	Height	Area%	MS (+)
1.19	0.01	2.95	3.56	0.20	181
1.58	0.01	0.74	1.11	0.05	318
1.77	0.02	2.86	2.69	0.20	524
1.83	0.02	1434.42	1174.89	99.55	480

Integration Results for DAD1 C, Sig=254,4 Ref=off

RetTim	Width	Area	Height	Area%	MS (+)
1.19	0.02	0.74	0.79	0.06	181
1.58	0.02	3.30	3.45	0.26	318
1.69	0.01	0.45	0.54	0.04	ND
1.78	0.02	2.64	2.36	0.21	524
1.83	0.02	1251.67	1028.26	99.40	480
2.09	0.02	0.42	0.44	0.03	480

Integration Results for MSD1 TIC, MS File

RetTim	Width	Area	Height	Area%	MS (+)
--------	-------	------	--------	-------	--------



Ret. Time: 1.84

<<<< POSITIVE SPECTRA >>>>

ES-API Positive

