

File ..1 2020-01-21 08-37-32\CPK2020-121-24562\_0.D Tgt Mass (CHM):

Injection Date : 21 Jan 20 11:42 am +0800 Seq. Line : 43

Sample Name : CPK2020-121-24562\_0 Location : P2-F-02

Acq. Operator : SYSTEM Inj : 1

Spec. Reported : MS Integration Inj Volume : 0.2 ul

Acq. Method : D:\LCMS03\Data\20200121\20200121 2020-01-21 08-37-32\1-POS-UPLC2.0MIN(0.8ML)  
Analysis Method : D:\LCMS03\Data\20200121\20200121 2020-01-21 08-37-32\1-POS-UPLC2.0MIN(0.8ML) .1

Catalog No : HY-20878 Batch# 24562

Method Info : Mobile Phase: A: water(0.01%TFA) B:ACN(0.01%TFA)

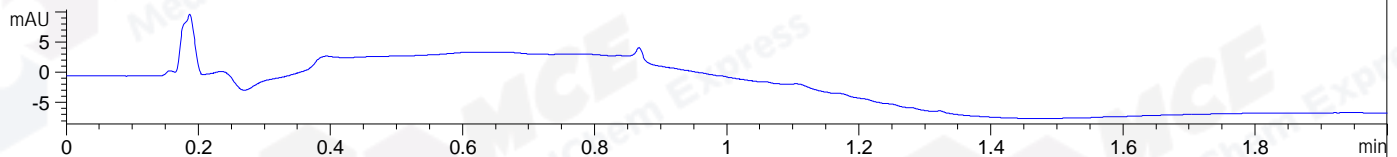
Gradient: 5% to 95%B within 0.6 min

Flow Rate : 0.8ml/min

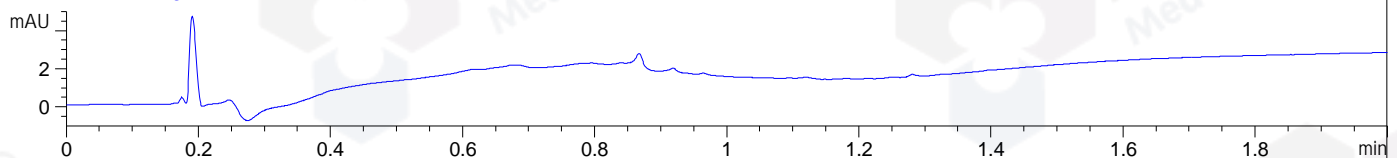
Column : Poroshell 120 EC- C18, 2.1\*50mm,1.9um A-RP-463

Oven Temperature : 45C

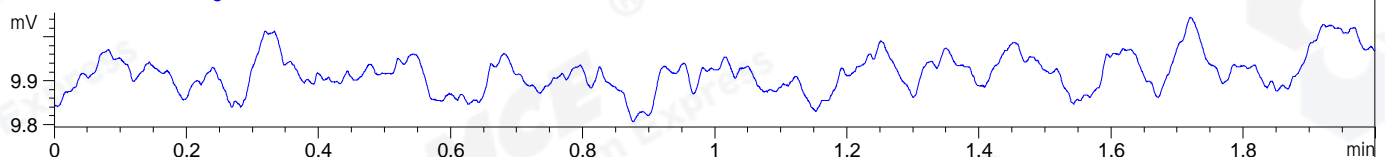
DAD1 A, Sig=214,4 Ref=off



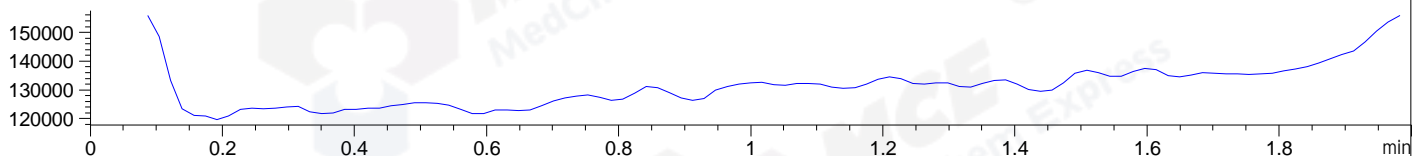
DAD1 B, Sig=254,4 Ref=off



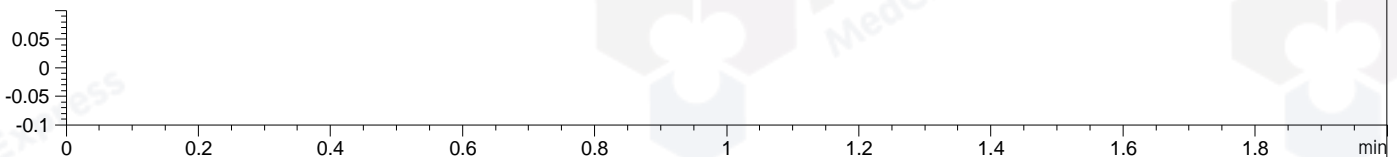
ELS1 A, ELSD Signal



MSD1 TIC, MS File ES-API, Pos, Scan, Frag: 70 \*\*\*\* NO MS PEAKS INTEGRATED \*\*\*\*



Ion 1, MSD1 1, Target Mass 0 +H Positive, EIC=0.7:1.7



## Integration Results for DAD1 A, Sig=214,4 Ref=off

RetTim	Width	Area	Height	Area%	MS (+)
-----	-----	-----	-----	-----	-----

## Integration Results for DAD1 B, Sig=254,4 Ref=off

RetTim	Width	Area	Height	Area%	MS (+)
-----	-----	-----	-----	-----	-----

## Integration Results for ELS1 A, ELSD Signal

RetTim	Width	Area	Height	Area%	MS (+)
-----	-----	-----	-----	-----	-----

## Integration Results for MSD1 TIC, MS File

RetTim	Width	Area	Height	Area%	MS (+)
-----	-----	-----	-----	-----	-----

\*\*\* End of Report \*\*\*

File ..121 2020-01-21 08-37-32\CPK2020-121-24562.D Tgt Mass (CHM):

Injection Date : 21 Jan 20 11:46 am +0800 Seq. Line : 44

Sample Name : CPK2020-121-24562 Location : P2-F-07

Acq. Operator : SYSTEM Inj : 1

Spec. Reported : MS Integration Inj Volume : 0.2 ul

Acq. Method : D:\LCMS03\Data\20200121\20200121 2020-01-21 08-37-32\1-POS-UPLC2.0MIN(0.8ML)  
Analysis Method : D:\LCMS03\Data\20200121\20200121 2020-01-21 08-37-32\1-POS-UPLC2.0MIN(0.8ML) .1

Catalog No : HY-20878 Batch# 24562

Method Info : Mobile Phase: A: water(0.01%TFA) B:ACN(0.01%TFA)

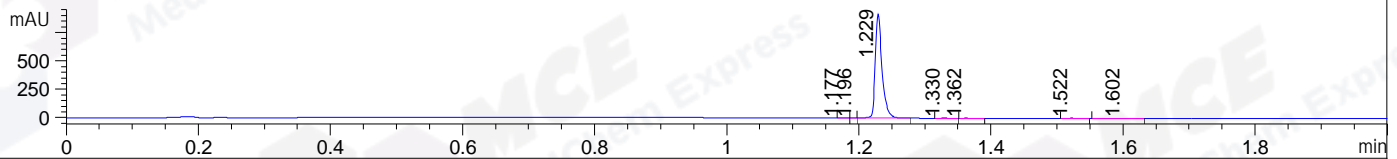
Gradient: 5% to 95%B within 0.6 min

Flow Rate : 0.8ml/min

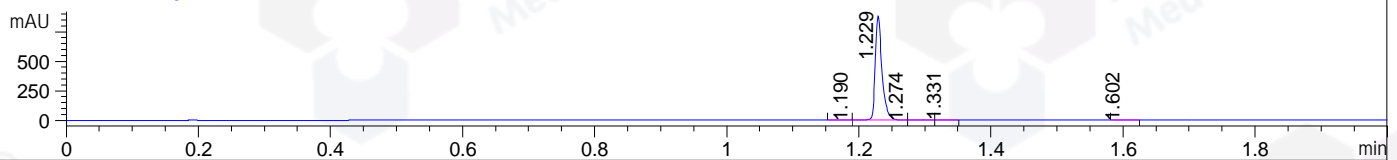
Column : Poroshell 120 EC- C18, 2.1\*50mm,1.9um A-RP-463

Oven Temperature : 45C

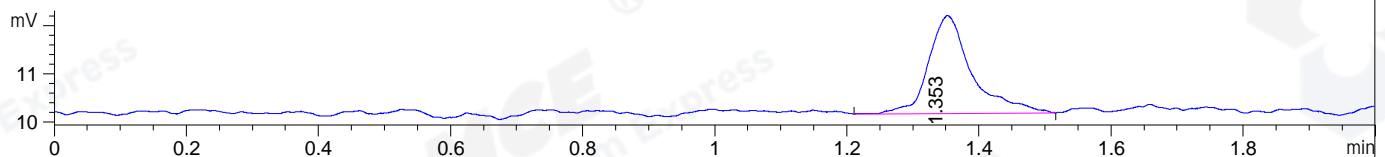
DAD1 A, Sig=214,4 Ref=off



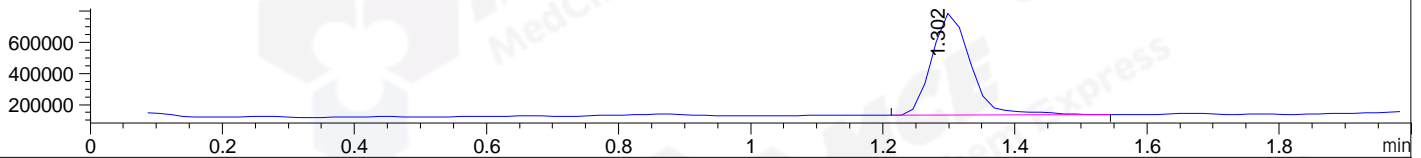
DAD1 B, Sig=254,4 Ref=off



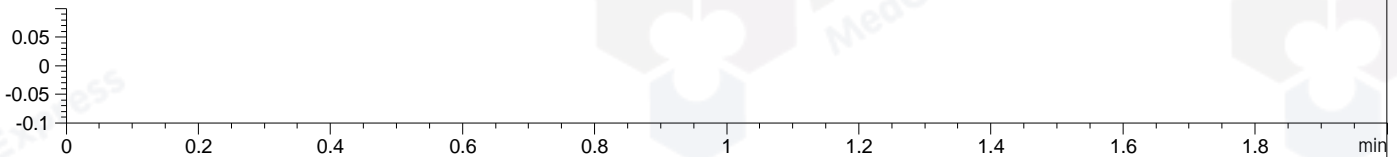
ELS1 A, ELSD Signal



MSD1 TIC, MS File ES-API, Pos, Scan, Frag: 70



Ion 1, MSD1 1, Target Mass 0 +H Positive, EIC=0.7:1.7



Integration Results for DAD1 A, Sig=214,4 Ref=off

RetTim	Width	Area	Height	Area%	MS (+)
1.18	0.01	0.49	0.70	0.07	114
1.20	0.01	0.47	0.78	0.07	114
1.23	0.01	652.34	920.02	99.03	317
1.33	0.01	0.95	1.16	0.14	317
1.36	0.01	0.94	1.48	0.14	114
1.52	0.01	1.55	2.00	0.24	114
1.60	0.02	1.95	1.64	0.30	114

Integration Results for DAD1 B, Sig=254,4 Ref=off

RetTim	Width	Area	Height	Area%	MS (+)
1.19	0.02	0.39	0.40	0.06	114
1.23	0.01	627.08	880.69	99.54	317
1.27	0.01	0.70	0.79	0.11	317
1.33	0.01	0.83	1.25	0.13	317
1.60	0.02	0.97	0.95	0.15	114

Integration Results for ELS1 A, ELSD Signal

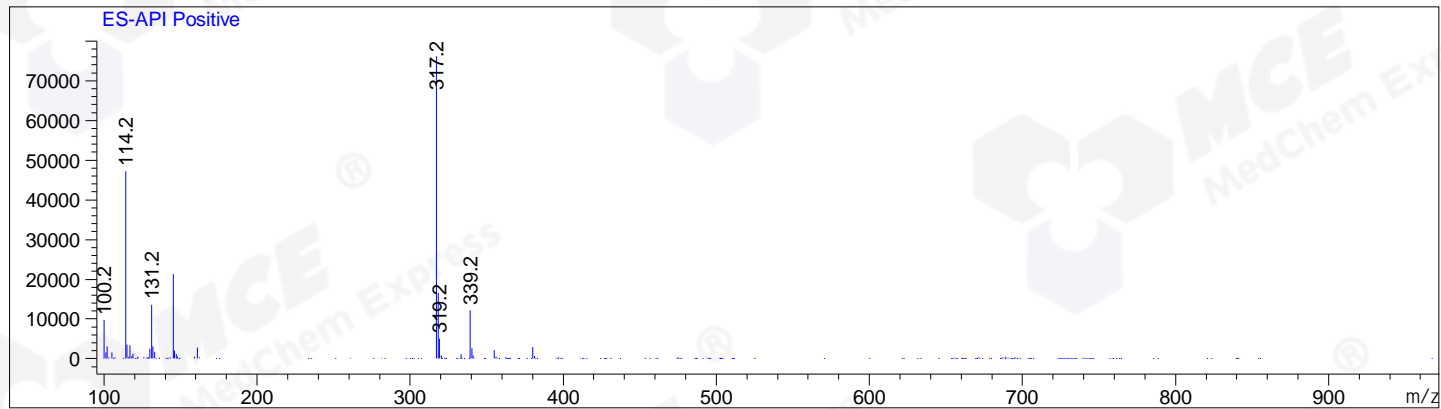
RetTim	Width	Area	Height	Area%	MS (+)
1.35	0.06	9.19	2.03	100.00	317

Integration Results for MSD1 TIC, MS File

RetTim	Width	Area	Height	Area%	MS (+)
1.30	0.06	2696234.75	657655.31	100.00	317

Ret. Time: 1.30

<<<< POSITIVE SPECTRA >>>>



\*\*\* End of Report \*\*\*