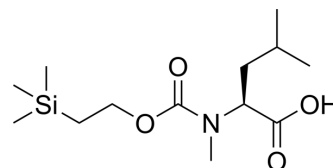


## Teoc-MeLeu-OH

Cat. No.:	HY-23424
CAS No.:	2411590-92-4
Molecular Formula:	C <sub>13</sub> H <sub>27</sub> NO <sub>4</sub> Si
Molecular Weight:	289.44
Target:	Amino Acid Derivatives
Pathway:	Others
Storage:	<div> Powder -20°C 3 years </div> <div> 4°C 2 years </div> <div> In solvent -80°C 6 months </div> <div> -20°C 1 month </div>



### SOLVENT & SOLUBILITY

#### In Vitro

DMSO : 100 mg/mL (345.49 mM; Need ultrasonic)

	Solvent Concentration	Mass	1 mg	5 mg	10 mg
Preparing Stock Solutions	1 mM		3.4549 mL	17.2747 mL	34.5495 mL
	5 mM		0.6910 mL	3.4549 mL	6.9099 mL
	10 mM		0.3455 mL	1.7275 mL	3.4549 mL

Please refer to the solubility information to select the appropriate solvent.

### BIOLOGICAL ACTIVITY

#### Description

Teoc-MeLeu-OH is a leucine derivative<sup>[1]</sup>.

#### In Vitro

Amino acids and amino acid derivatives have been commercially used as ergogenic supplements. They influence the secretion of anabolic hormones, supply of fuel during exercise, mental performance during stress related tasks and prevent exercise induced muscle damage. They are recognized to be beneficial as ergogenic dietary substances<sup>[1]</sup>.  
MCE has not independently confirmed the accuracy of these methods. They are for reference only.

### REFERENCES

[1]. Luckose F, et al. Effects of amino acid derivatives on physical, mental, and physiological activities. Crit Rev Food Sci Nutr. 2015;55(13):1793-1144.

---

**Caution: Product has not been fully validated for medical applications. For research use only.**

Tel: 609-228-6898

Fax: 609-228-5909

E-mail: [tech@MedChemExpress.com](mailto:tech@MedChemExpress.com)

Address: 1 Deer Park Dr, Suite Q, Monmouth Junction, NJ 08852, USA