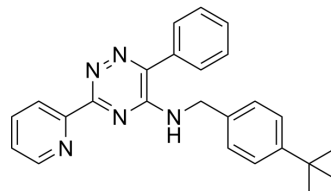


ML228 analog

Cat. No.:	HY-29090
CAS No.:	1357026-36-8
Molecular Formula:	C ₂₅ H ₂₅ N ₅
Molecular Weight:	395.5
Target:	HIF/HIF Prolyl-Hydroxylase
Pathway:	Metabolic Enzyme/Protease
Storage:	Please store the product under the recommended conditions in the Certificate of Analysis.



BIOLOGICAL ACTIVITY

Description

ML228 analog is an analog of ML228 (HY-12754). ML228 is a potent activator of HIF^[1].

REFERENCES

[1]. Theriault JR, et al. Discovery of a new molecular probe ML228: an activator of the hypoxia inducible factor (HIF) pathway. *Bioorg Med Chem Lett*. 2012 Jan 1;22(1):76-81.

Caution: Product has not been fully validated for medical applications. For research use only.

Tel: 609-228-6898

Fax: 609-228-5909

E-mail: tech@MedChemExpress.com

Address: 1 Deer Park Dr, Suite Q, Monmouth Junction, NJ 08852, USA