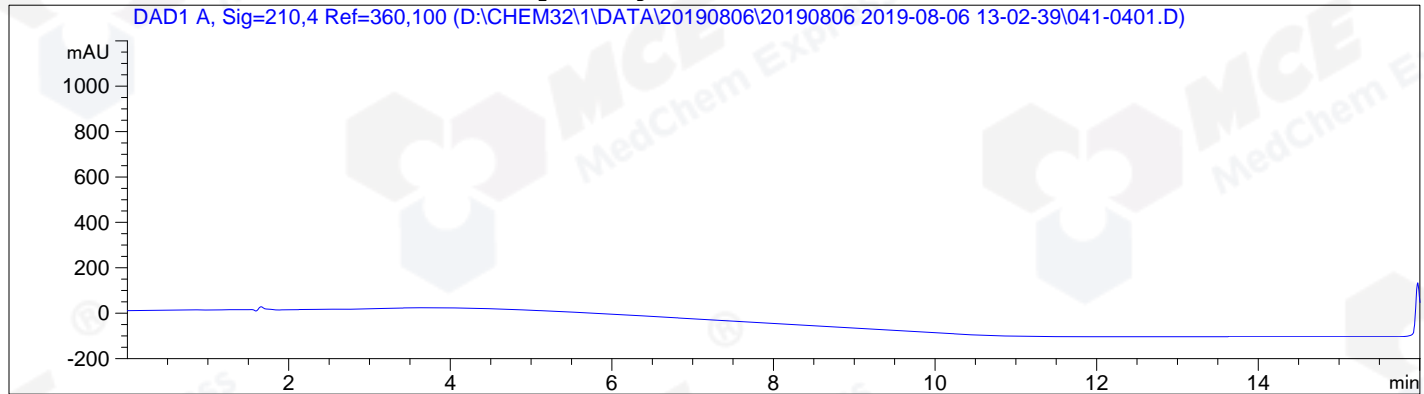


```
=====
Acq. Operator   : JLW                               Seq. Line :    4
Acq. Instrument : HPLC-12                           Location  : Vial 41
Injection Date  : 8/6/2019 14:01:58                 Inj       :    1
                                                    Inj Volume: 5.0 µl

Acq. Method    : D:\CHEM32\1\DATA\20190806\20190806 2019-08-06 13-02-39\30-90A.M
Last changed   : 7/29/2019 16:37:23 by ZQQ
Analysis Method : D:\CHEM32\1\METHOD\30-90A.M
Last changed   : 8/6/2019 15:14:50 by ZQQ
                (modified after loading)

Catalog No     : HY-32219 Batch#01242
                A-RP-243
=====
```

Additional Info : Peak(s) manually integrated



```
=====
                          Area Percent Report
=====
```

```
Sorted By      :      Signal
Multiplier:    :      1.0000
Dilution:      :      1.0000
Use Multiplier & Dilution Factor with ISTDs
```

No peaks found

```
=====
*** End of Report ***
```

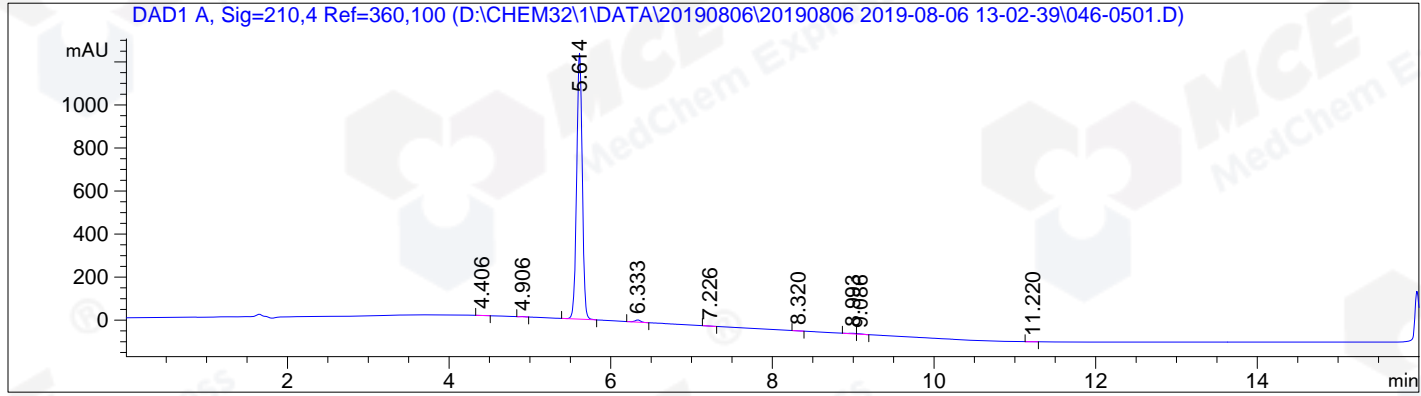
```

=====
Acq. Operator   : JLW                      Seq. Line : 5
Acq. Instrument : HPLC-12                   Location  : Vial 46
Injection Date  : 8/6/2019 14:19:06       Inj       : 1
                                           Inj Volume: 5.0 µl

Acq. Method    : D:\CHEM32\1\DATA\20190806\20190806 2019-08-06 13-02-39\30-90A.M
Last changed   : 7/29/2019 16:37:23 by ZQQ
Analysis Method: D:\CHEM32\1\METHOD\30-90A.M
Last changed   : 8/6/2019 14:01:34 by ZQQ
                (modified after loading)

Catalog No     : HY-32219 Batch#01242
                A-RP-243
    
```

Additional Info : Peak(s) manually integrated



Area Percent Report

Sorted By : Signal
 Multiplier: : 1.0000
 Dilution: : 1.0000
 Use Multiplier & Dilution Factor with ISTDs

Signal 1: DAD1 A, Sig=210,4 Ref=360,100

Peak #	RetTime [min]	Type	Width [min]	Area [mAU*s]	Height [mAU]	Area %
1	4.406	MM	0.0807	6.46734	1.33649	0.1074
2	4.906	MM	0.0607	3.91074	1.07389	0.0649
3	5.614	MM	0.0797	5922.75342	1238.22083	98.3225
4	6.333	MM	0.0813	51.68166	10.59142	0.8580
5	7.226	MM	0.0889	5.15990	9.67089e-1	0.0857
6	8.320	MM	0.0767	4.90814	1.06587	0.0815
7	8.993	MF	0.0901	16.65287	3.08096	0.2765
8	9.086	FM	0.0820	10.99633	2.23386	0.1825
9	11.220	MM	0.0765	1.27251	2.77410e-1	0.0211

Totals : 6023.80290 1258.84781

*** End of Report ***