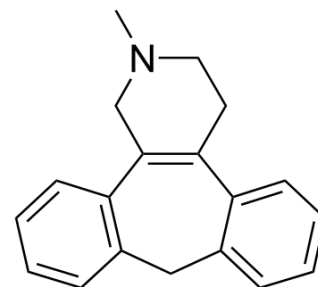


Setiptiline

Cat. No.:	HY-32329		
CAS No.:	57262-94-9		
Molecular Formula:	C ₁₉ H ₁₉ N		
Molecular Weight:	261.36		
Target:	5-HT Receptor; Adrenergic Receptor		
Pathway:	GPCR/G Protein; Neuronal Signaling		
Storage:	Powder	-20°C	3 years
		4°C	2 years
	In solvent	-80°C	6 months
		-20°C	1 month



SOLVENT & SOLUBILITY

In Vitro	DMSO : 25 mg/mL (95.65 mM; Need ultrasonic)				
		Solvent Concentration	Mass 1 mg	5 mg	10 mg
	Preparing Stock Solutions	1 mM	3.8261 mL	19.1307 mL	38.2614 mL
		5 mM	0.7652 mL	3.8261 mL	7.6523 mL
10 mM		0.3826 mL	1.9131 mL	3.8261 mL	
Please refer to the solubility information to select the appropriate solvent.					
In Vivo	1. Add each solvent one by one: 10% DMSO >> 90% corn oil Solubility: ≥ 2.5 mg/mL (9.57 mM); Clear solution				

BIOLOGICAL ACTIVITY

Description	Setiptiline (Org-8282) is a serotonin receptor antagonist. Setiptiline is a tetracyclic antidepressant (TeCA) which acts as a noradrenergic and specific serotonergic antidepressant (NaSSA). Setiptiline acts as a norepinephrine reuptake inhibitor, α ₂ -adrenergic receptor antagonist, and serotonin receptor antagonist, likely at the 5-HT _{2A} , 5-HT _{2C} , and/or 5-HT ₃ subtypes, as well as an H ₁ receptor inverse agonist/antihistamine.		
IC₅₀ & Target	5-HT _{2A} Receptor	5-HT _{2C} Receptor	5-HT ₃ Receptor

REFERENCES

[1]. Yamada K, Furukawa T. [Behavioral effects of a new antidepressant, setiptiline]. Nihon Yakurigaku Zasshi. 1991 Jan;97(1):31-9.

[2]. Kamimura M, Aoba A, Yamaguchi N et al. The effect of age on plasma level of setiptiline maleate in depressed patients. Prog Neuropsychopharmacol Biol Psychiatry. 1994 Oct;18(6):1015-26.

[3]. Kuniyoshi M, Nakamura J, Miura C, Inanaga K. Effectiveness of concomitant setiptiline maleate (Tecipul) on negative symptoms of schizophrenia. Prog Neuropsychopharmacol Biol Psychiatry. 1994 Mar;18(2):339-46.

[4]. Niho T, Ito C, Shibutani Y, Hashizume H, Yamaguchi K. [Pharmacological properties of MO-8282, a novel antidepressant]. Nihon Yakurigaku Zasshi. 1986 Oct;88(4):309-20.

Caution: Product has not been fully validated for medical applications. For research use only.

Tel: 609-228-6898

Fax: 609-228-5909

E-mail: tech@MedChemExpress.com

Address: 1 Deer Park Dr, Suite Q, Monmouth Junction, NJ 08852, USA