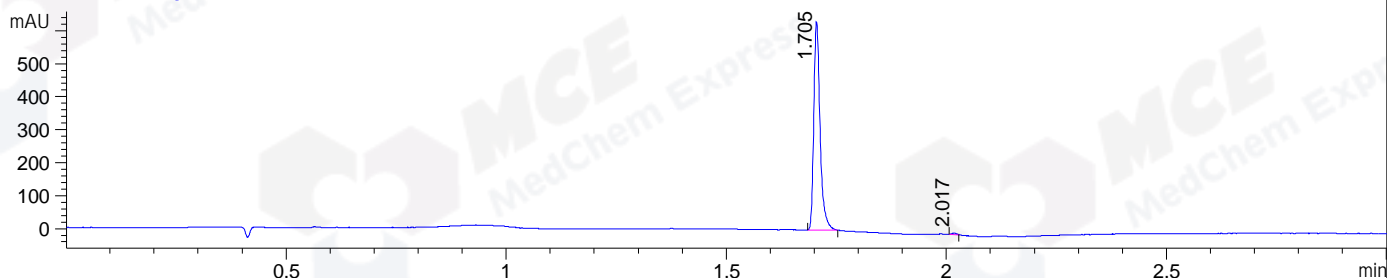
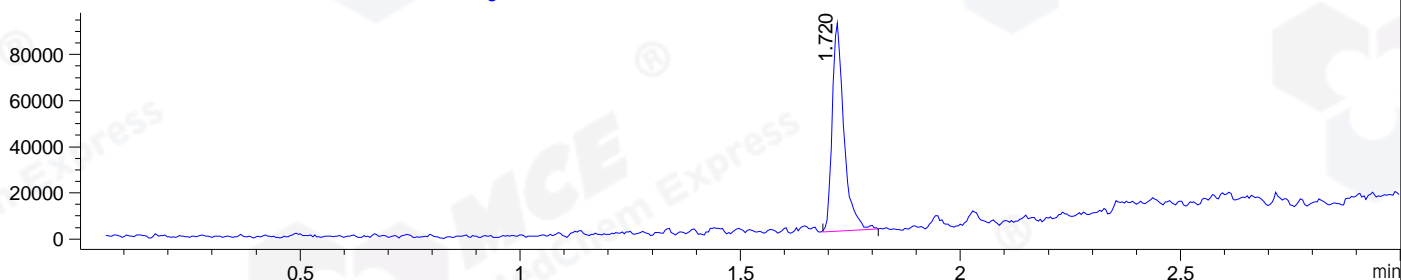


File ..DATA\2020\20201202\1181\CPK2020-D02-16673.D Tgt Mass (CHM):
Injection Date : 2 Dec 20 11:16 pm +0800 Seq. Line : 152
Sample Name : CPK2020-D02-16673 Location : P1-D-08
Acq. Operator : zyj_1547 Inj : 1
Spec. Reported : MS Integration Inj Volume : 1 ul
Acq. Method : D:\Chem32\1\data\2020\20201202\1181\1-POS-3MIN.M
Analysis Method : D:\CHEM32\1\DATA\2020\20201202\1181\1-POS-3MIN.M
CAS NO. : 781649-09-0
Method Info : Mobile Phase: A: water(0.01%TFA) B:ACN(0.01%TFA)
Gradient: 5% to 95%B within 1.3 min
Flow Rate :1.8ml/min
Column :SunFire C18, 4.6*50mm,3.5um A-RP-698

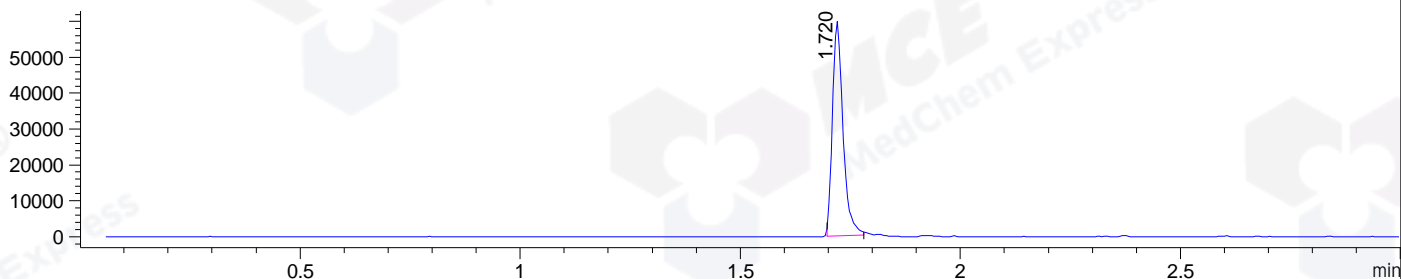
DAD1 B, Sig=214,4 Ref=off



MSD1 TIC, MS File ES-API, Pos, Scan, Frag: 70



Ion 567, MSD1 567, Target Mass 566 +H Positive, EIC=566.7:567.7



Integration Results for DAD1 B, Sig=214,4 Ref=off

RetTim	Width	Area	Height	Area%	MS(+)
1.71	0.02	625.69	632.06	99.55	567
2.02	0.01	2.82	4.05	0.45	693

Integration Results for MSD1 TIC, MS File

RetTim	Width	Area	Height	Area%	MS(+)
1.72	0.03	167998.02	90335.55	100.00	567

Ret. Time: 1.72

<<<< POSITIVE SPECTRA >>>>

ES-API Positive

