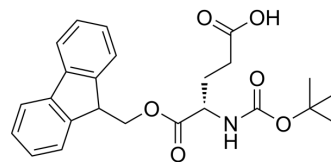


Boc-Glu-Ofm

Cat. No.:	HY-35028
CAS No.:	133906-29-3
Molecular Formula:	C ₂₄ H ₂₇ NO ₆
Molecular Weight:	425.47
Target:	Amino Acid Derivatives
Pathway:	Others
Storage:	Please store the product under the recommended conditions in the Certificate of Analysis.



BIOLOGICAL ACTIVITY

Description

Boc-Glu-Ofm is a peptide. Boc-Glu-Ofm has been used for the synthesis of ester insulin and cyclic peptide mixtures^{[1][2]}.

REFERENCES

[1]. Avital-Shmilovici M, et al. Fully convergent chemical synthesis of ester insulin: determination of the high resolution X-ray structure by racemic protein crystallography. J Am Chem Soc. 2013 Feb 27;135(8):3173-85.

[2]. Romanovskis P, et al. Preparation of head-to-tail cyclic peptides via side-chain attachment: implications for library synthesis. J Pept Res. 1998 Nov;52(5):356-74.

Caution: Product has not been fully validated for medical applications. For research use only.

Tel: 609-228-6898

Fax: 609-228-5909

E-mail: tech@MedChemExpress.com

Address: 1 Deer Park Dr, Suite Q, Monmouth Junction, NJ 08852, USA