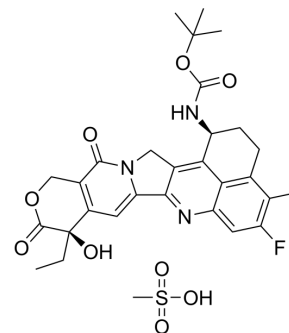


Exatecan intermediate 8

Cat. No.:	HY-400316
Molecular Formula:	C ₃₀ H ₃₄ FN ₃ O ₉ S
Molecular Weight:	631.67
Target:	ADC Cytotoxin; Topoisomerase
Pathway:	Antibody-drug Conjugate/ADC Related; Cell Cycle/DNA Damage
Storage:	Please store the product under the recommended conditions in the Certificate of Analysis.



BIOLOGICAL ACTIVITY

Description	Exatecan intermediate 8 is an intermediate for the synthesis of Exatecan (HY-13631). Exatecan (DX-8951) is a common toxin component in ADC preparation (ADC Cytotoxin) and an inhibitor of DNA topoisomerase I (IC ₅₀ =2.2 μM) ^[1] .
IC₅₀ & Target	Camptothecins

REFERENCES

[1]. Mitsui I, et al. A new water-soluble camptothecin derivative, DX-8951f, exhibits potent antitumor activity against human tumors in vitro and in vivo. Jpn J Cancer Res. 1995 Aug;86(8):776-82.

Caution: Product has not been fully validated for medical applications. For research use only.

Tel: 609-228-6898

Fax: 609-228-5909

E-mail: tech@MedChemExpress.com

Address: 1 Deer Park Dr, Suite Q, Monmouth Junction, NJ 08852, USA