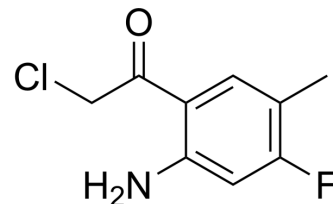


MC-GGFG-AM-(10Me-11F-Camptothecin) intermediate-1

Cat. No.:	HY-400770
CAS No.:	1241391-14-9
Molecular Formula:	C ₉ H ₉ ClFNO
Molecular Weight:	201.63
Target:	Drug-Linker Conjugates for ADC; Topoisomerase
Pathway:	Antibody-drug Conjugate/ADC Related; Cell Cycle/DNA Damage
Storage:	Please store the product under the recommended conditions in the Certificate of Analysis.



BIOLOGICAL ACTIVITY

Description

MC-GGFG-AM-(10Me-11F-Camptothecin) intermediate-1 (compound 19-2) is an intermediate for the synthesis of MC-GGFG-AM-(10Me-11F-Camptothecin) (HY-153360). Modifying groups can be added group. MC-GGFG-AM-(10Me-11F-Camptothecin) is a drug-linker conjugate used in the synthesis of ADCs^[1].

REFERENCES

[1]. Jiangsu Simcere Pharmaceutical, et al. Camptothecin derivative, and pharmaceutical composition and use thereof. World Intellectual Property Organization, WO2023020605 A1 2023-02-23.

Caution: Product has not been fully validated for medical applications. For research use only.

Tel: 609-228-6898

Fax: 609-228-5909

E-mail: tech@MedChemExpress.com

Address: 1 Deer Park Dr, Suite Q, Monmouth Junction, NJ 08852, USA