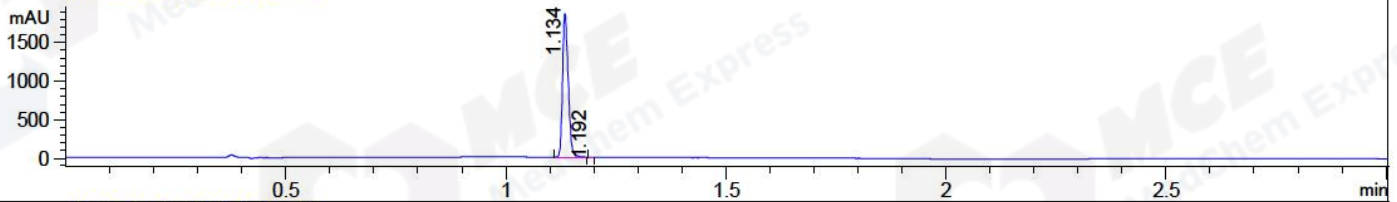
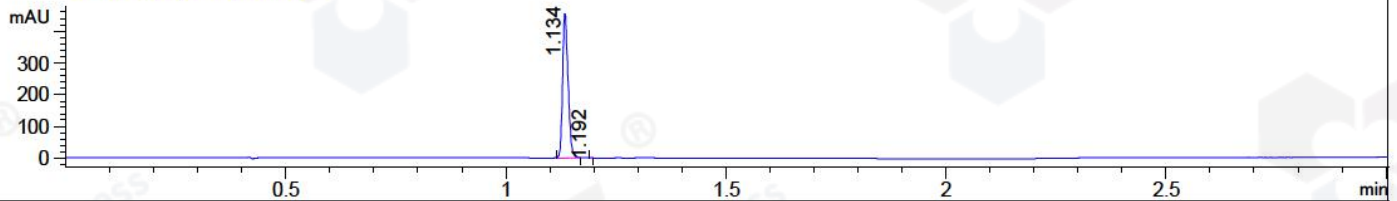


File ..1\DATA\2018\20181025\465\BIZ2018-O25-WYQ1.D Tgt Mass (CHM):
Injection Date : 25 Oct 18 4:51 pm +0800 Seq. Line : 8
Sample Name : BIZ2018-O25-WYQ1 Location : P1-A-01
Acq. Operator : LQ_1052 Inj : 1
Spec. Reported : MS Integration Inj Volume : 1 ul
Acq. Method : D:\Chem32\1\data\2018\20181025\465\1-POS-3MIN-1.M
Analysis Method : D:\CHEM32\1\DATA\2018\20181025\465\1-POS-3MIN-1.M
Catalog No : HY-40354 Batch#33899 A-RP-314
Method Info : Mobile Phase: A: water(0.01%TFA) B:ACN(0.01%TFA)
Gradient: 5% to 95%B within 1.3 min
Flow Rate :1.8ml/min
Column :SunFire C18, 4.6*50mm,3.5um A-RP-314
Oven Temperature : 45□

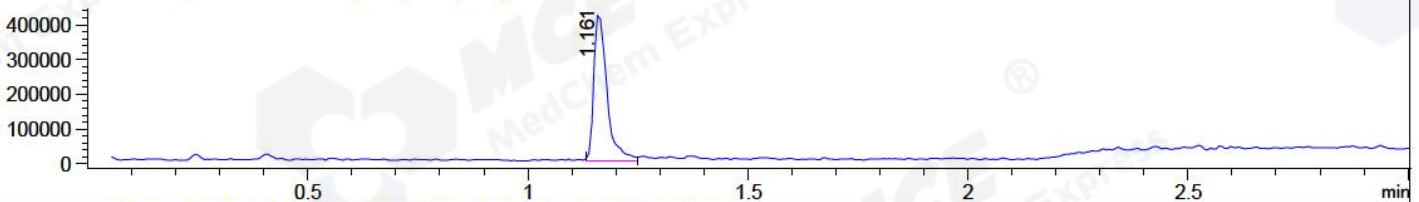
DAD1 B, Sig=214,4 Ref=off



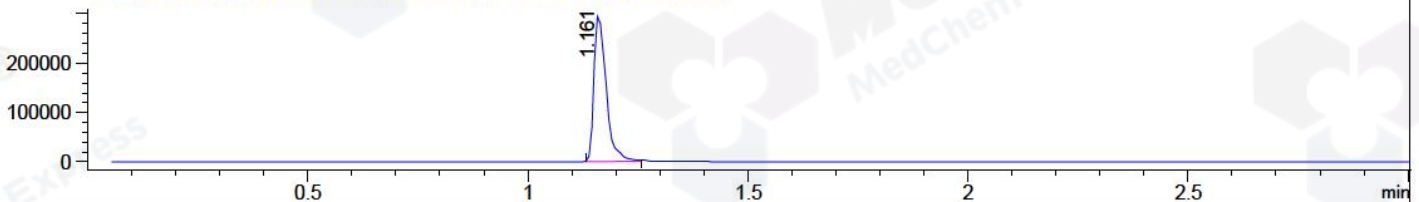
DAD1 C, Sig=254,4 Ref=off



MSD1 TIC, MS File ES-API, Pos, Scan, Frag: 70



Ion 313.1, MSD1 313.1, Target Mass 312.1 +H Positive, EIC=312.8:313.8



Integration Results for DAD1 B, Sig=214,4 Ref=off

RetTim	Width	Area	Height	Area%	MS (+)
1.13	0.01	1675.95	1863.28	99.96	313
1.19	0.01	0.67	1.00	0.04	313

Integration Results for DAD1 C, Sig=254,4 Ref=off

RetTim	Width	Area	Height	Area%	MS (+)
1.13	0.01	396.81	455.98	99.99	313
1.19	0.01	0.03	0.07	0.01	313

Integration Results for MSD1 TIC, MS File

RetTim	Width	Area	Height	Area%	MS (+)
1.16	0.03	857986.75	427264.81	100.00	313

Ret. Time: 1.16

<<<< POSITIVE SPECTRA >>>>

ES-API Positive

