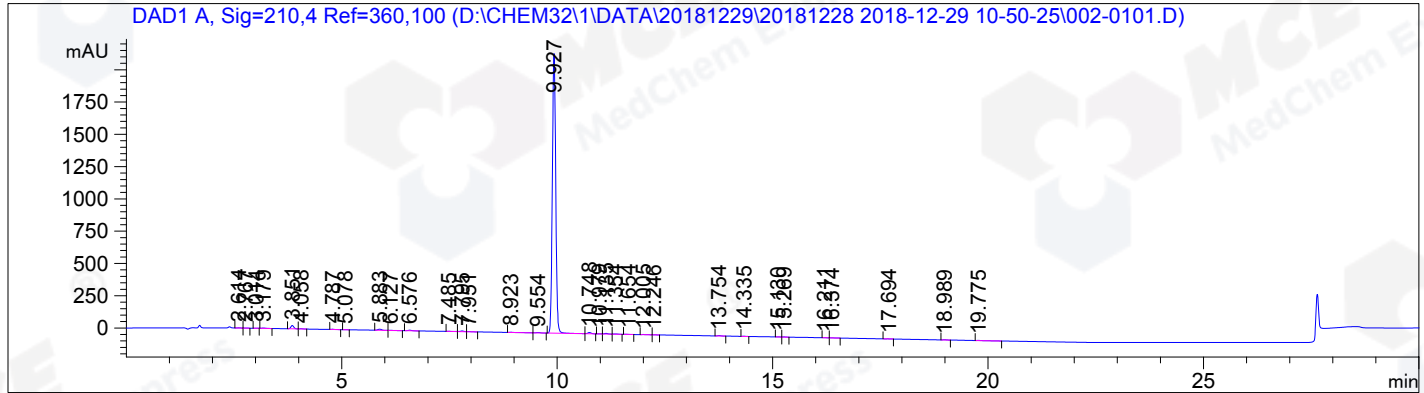


```

=====
Acq. Operator   : ZQQ                               Seq. Line :    1
Acq. Instrument : HPLC-12                           Location  : Vial 2
Injection Date  : 12/29/2018 10:50:41              Inj       :    1
                                                    Inj Volume: 5.0 µl

Acq. Method     : D:\CHEM32\1\DATA\20181229\20181228 2018-12-29 10-50-25\HM-297D_18-H01P03.M
Last changed    : 12/29/2018 9:28:28 by ZQQ
Analysis Method : D:\CHEM32\1\DATA\20181229\20181228 2018-12-29 10-50-25\HM-297D_18-H01P03.M (
Sequence Method)
Last changed    : 12/29/2018 11:23:26 by ZQQ
                (modified after loading)
Catalog No     : HY-41189 Batch#36446
                A-RP-260
  
```

Additional Info : Peak(s) manually integrated



Area Percent Report

```

=====
Sorted By      : Signal
Multiplier:    : 1.0000
Dilution:      : 1.0000
Use Multiplier & Dilution Factor with ISTDs
  
```

Signal 1: DAD1 A, Sig=210,4 Ref=360,100

Peak #	RetTime [min]	Type	Width [min]	Area [mAU*s]	Height [mAU]	Area %
1	2.614	MF	0.0870	8.75385	1.67736	0.0715
2	2.767	FM	0.0964	2.40747	4.16053e-1	0.0197
3	3.014	MM	0.0804	2.18547	4.52831e-1	0.0179
4	3.179	BB	0.0956	13.53579	2.26836	0.1106
5	3.851	BV	0.0727	121.72747	25.98481	0.9944
6	4.058	VB	0.0757	10.19533	2.06168	0.0833
7	4.787	BB	0.0665	8.20567	1.89449	0.0670
8	5.078	BB	0.0694	2.95597	6.70287e-1	0.0241
9	5.883	BV	0.1004	53.45252	8.37973	0.4367
10	6.127	VB	0.0976	6.68160	1.03049	0.0546
11	6.576	BB	0.0895	26.74095	4.48597	0.2185
12	7.485	BV	0.1028	5.88366	8.28948e-1	0.0481
13	7.795	VV	0.0849	29.44425	5.29698	0.2405
14	7.951	VB	0.0806	7.60900	1.41820	0.0622
15	8.923	BV	0.1230	12.86246	1.42905	0.1051
16	9.554	VB	0.0999	19.42743	2.98633	0.1587
17	9.927	BV	0.0852	1.17362e4	2164.82495	95.8781
18	10.748	VB	0.0825	50.19485	9.36931	0.4101
19	10.979	BV	0.0774	4.39583	8.93824e-1	0.0359

Peak #	RetTime [min]	Type	Width [min]	Area [mAU*s]	Height [mAU]	Area %
20	11.135	VV	0.0833	25.51539	4.70490	0.2084
21	11.354	VB	0.0912	9.94052	1.67532	0.0812
22	11.654	MM	0.1001	3.77028	6.27833e-1	0.0308
23	12.005	BV	0.1029	10.96183	1.54333	0.0896
24	12.246	VB	0.0798	4.12396	8.05039e-1	0.0337
25	13.754	BB	0.0825	16.06722	2.99796	0.1313
26	14.335	BB	0.0819	4.48422	8.45799e-1	0.0366
27	15.130	BV	0.0788	4.31307	8.55671e-1	0.0352
28	15.269	VB	0.0786	5.92764	1.18011	0.0484
29	16.211	BV	0.0771	4.27533	8.74107e-1	0.0349
30	16.374	VB	0.0888	5.60950	9.51523e-1	0.0458
31	17.694	MM	0.1086	4.23986	6.50926e-1	0.0346
32	18.989	BB	0.0829	10.19993	1.95465	0.0833
33	19.775	BB	0.1008	8.46341	1.19275	0.0691

Totals : 1.22407e4 2257.22958

=====
*** End of Report ***