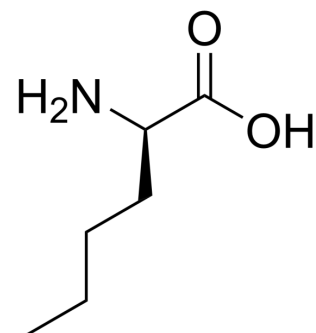


D-(-)-Norleucine

Cat. No.:	HY-41912A		
CAS No.:	327-56-0		
Molecular Formula:	C ₆ H ₁₃ NO ₂		
Molecular Weight:	131.17		
Storage:	Powder	-20°C	3 years
		4°C	2 years
	In solvent	-80°C	6 months
		-20°C	1 month



SOLVENT & SOLUBILITY

In Vitro

H₂O : 10 mg/mL (76.24 mM; Need ultrasonic)

	Solvent Concentration	Mass	1 mg	5 mg	10 mg
Preparing Stock Solutions	1 mM		7.6237 mL	38.1185 mL	76.2369 mL
	5 mM		1.5247 mL	7.6237 mL	15.2474 mL
	10 mM		0.7624 mL	3.8118 mL	7.6237 mL

Please refer to the solubility information to select the appropriate solvent.

BIOLOGICAL ACTIVITY

Description

D-(-)-Norleucine is a leucine derivative^[1].

In Vitro

Amino acids and amino acid derivatives have been commercially used as ergogenic supplements. They influence the secretion of anabolic hormones, supply of fuel during exercise, mental performance during stress related tasks and prevent exercise induced muscle damage. They are recognized to be beneficial as ergogenic dietary substances^[1].
MCE has not independently confirmed the accuracy of these methods. They are for reference only.

Caution: Product has not been fully validated for medical applications. For research use only.

Tel: 609-228-6898

Fax: 609-228-5909

E-mail: tech@MedChemExpress.com

Address: 1 Deer Park Dr, Suite Q, Monmouth Junction, NJ 08852, USA