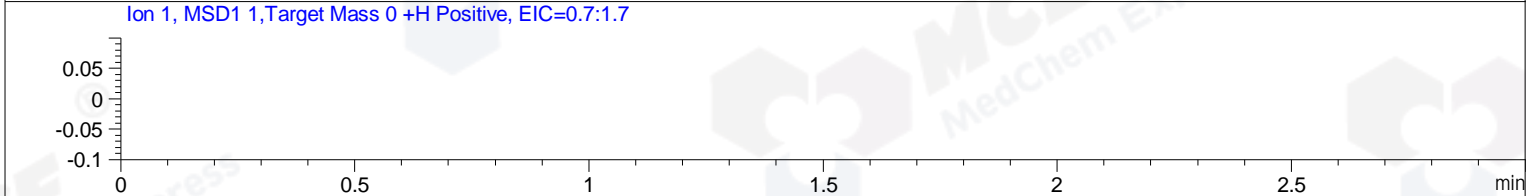
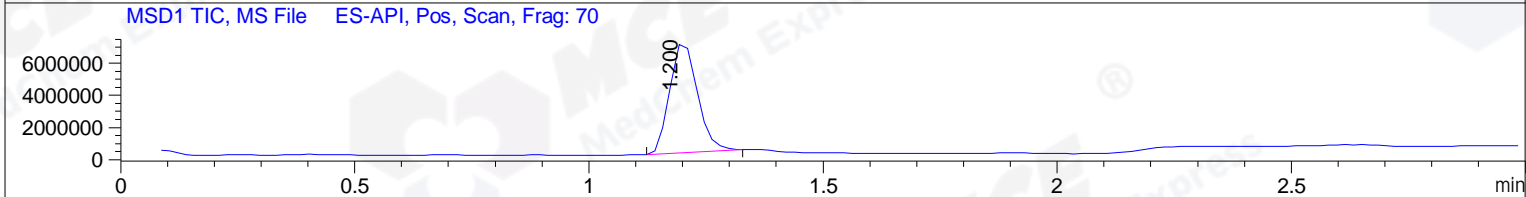
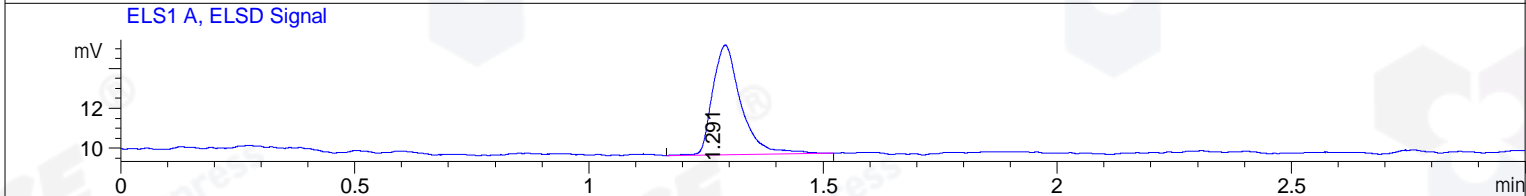
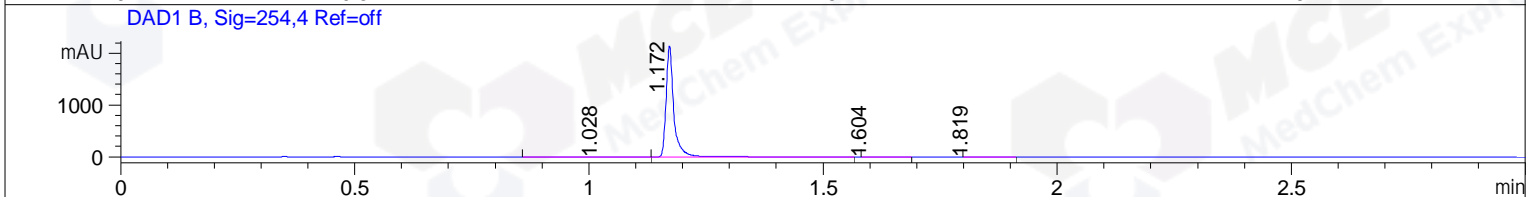
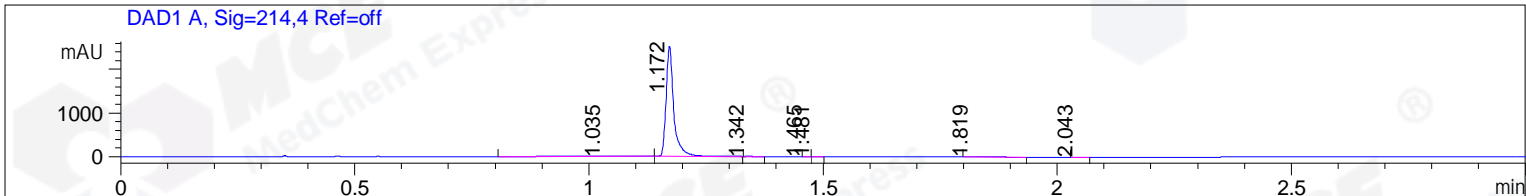


File ..3\Data\20190423\20190423\LJ2019-0423-0084.D Tgt Mass (CHM) :
 Injection Date : 23 Apr 19 6:02 pm +0800 Seq. Line : 107
 Sample Name : LJ2019-0423-0084 Location : P2-D-04
 Acq. Operator : SYSTEM Inj : 1
 Spec. Reported : MS Integration Inj Volume : 1 ul
 Acq. Method : D:\LCMS03\Data\20190423\20190423\1-POS-3MIN.M
 Analysis Method : D:\LCMS03\Data\20190423\20190423\1-POS-3MIN.M
 Catalog No : HY-42034 Batch#45638
 Method Info : Mobile Phase: A: water(0.01%TFA) B:ACN(0.01%TFA)
 Gradient: 5% to 95%B within 1.3 min
 Flow Rate :1.8ml/min
 Column :SunFire C18, 4.6*50mm,3.5um A-RP-392
 Oven Temperature : 45C



Integration Results for DAD1 A, Sig=214,4 Ref=off

RetTim	Width	Area	Height	Area%	MS (+)
1.04	0.13	47.83	4.25	1.64	114
1.17	0.02	2867.58	2508.51	98.11	327
1.34	0.02	1.10	0.98	0.04	114
1.46	0.01	0.08	0.14	0.00	114
1.48	0.01	0.36	0.40	0.01	114
1.82	0.03	5.38	2.79	0.18	114
2.04	0.02	0.56	0.48	0.02	114

Integration Results for DAD1 B, Sig=254,4 Ref=off

RetTim	Width	Area	Height	Area%	MS (+)
1.03	0.11	6.09	0.68	0.25	114
1.17	0.02	2423.42	2129.29	99.68	327
1.60	0.04	0.83	0.28	0.03	114
1.82	0.03	0.92	0.44	0.04	114

Integration Results for ELS1 A, ELSD Signal

1.29 0.06 23.17 5.49 100.00 327

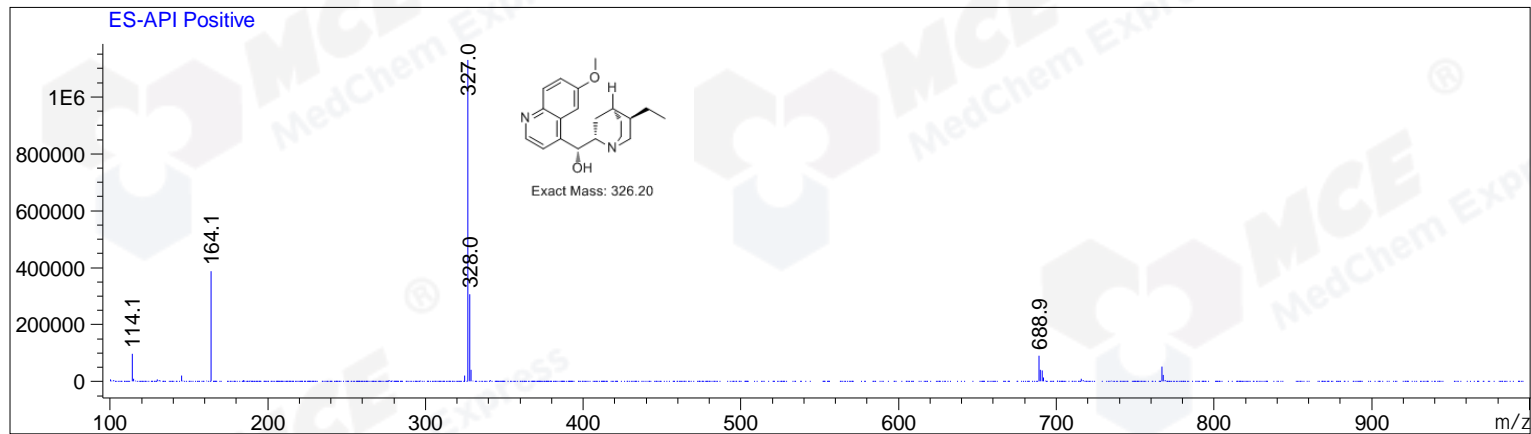
Integration Results for MSD1 TIC, MS File

RetTim	Width	Area	Height	Area%	MS (+)
1.20	0.06	27940290.00	6954811.50	100.00	327

RetTim Width Area Height Area% MS (+)

Ret. Time: 1.20

<<<< POSITIVE SPECTRA >>>>



*** End of Report ***