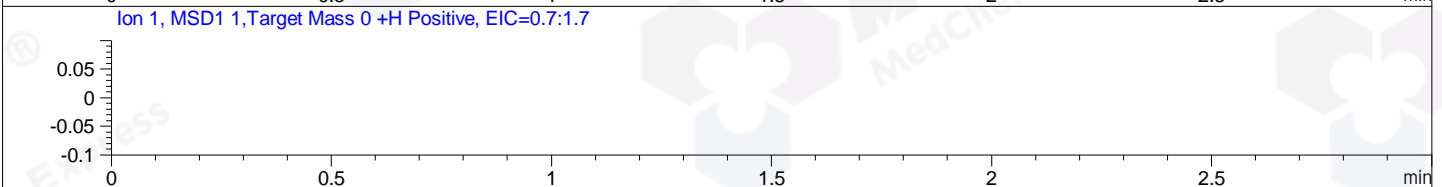
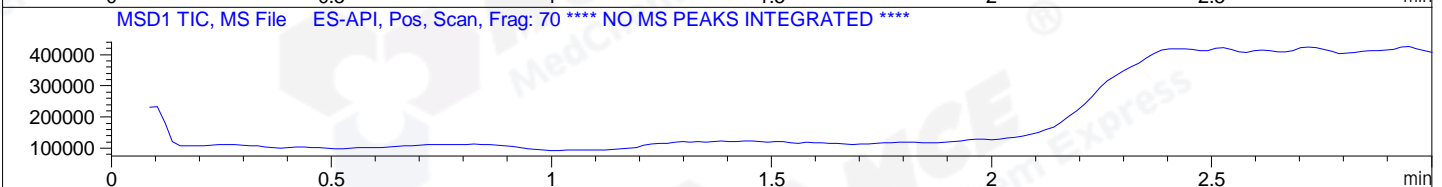
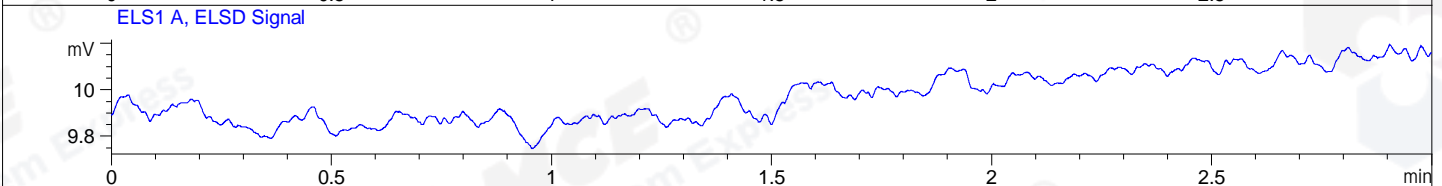
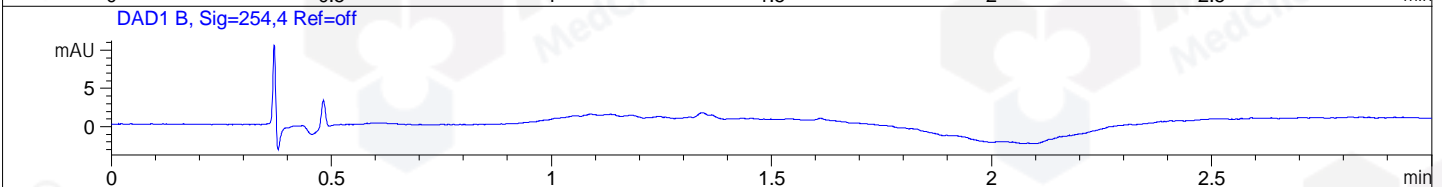
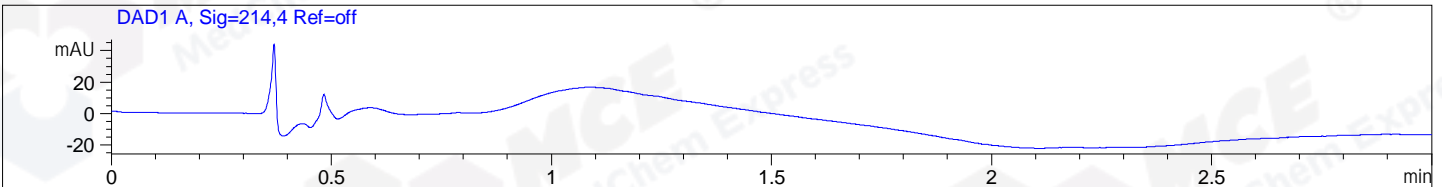


File ..ta\2018\20180518\20180518\SQW5526-017-2-0.D Tgt Mass (CHM):
Injection Date : 18 May 18 10:45 am +0800 Seq. Line : 34
Sample Name : SQW5526-017-2-0 Location : P1-C-05
Acq. Operator : SYSTEM Inj : 1
Spec. Reported : MS Integration Inj Volume : 1 ul
Acq. Method : D:\LCMS03\Data\2018\20180518\20180518\1-POS-3MIN.M
Analysis Method : D:\LCMS03\Data\2018\20180518\20180518\1-POS-3MIN.M
Catalog No : HY-42972 Batch#30158
Method Info : Mobile Phase: A: water(0.01%TFA) B:ACN(0.01%TFA)
Gradient: 5% to 95%B within 1.3 min
Flow Rate :1.8ml/min
Column :SunFire C18, 4.6*50mm,3.5um A-RP-186
Oven Temperature : 45C



Integration Results for DAD1 A, Sig=214,4 Ref=off

RetTim	Width	Area	Height	Area%	MS (+)
-----	-----	-----	-----	-----	-----

Integration Results for DAD1 B, Sig=254,4 Ref=off

RetTim	Width	Area	Height	Area%	MS (+)
-----	-----	-----	-----	-----	-----

Integration Results for ELS1 A, ELSD Signal

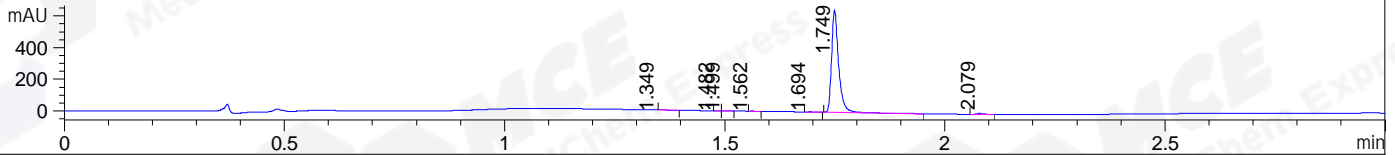
RetTim	Width	Area	Height	Area%	MS (+)
-----	-----	-----	-----	-----	-----

Integration Results for MSD1 TIC, MS File

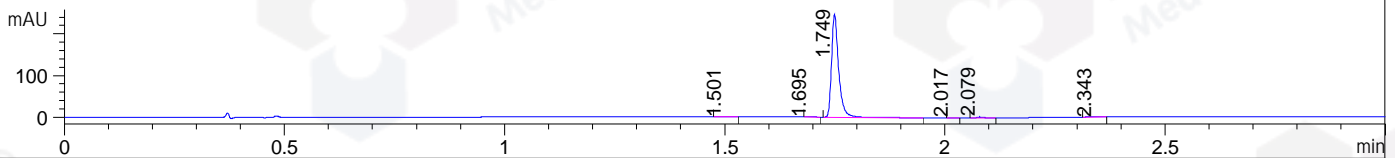
RetTim	Width	Area	Height	Area%	MS (+)
-----	-----	-----	-----	-----	-----

File ..Data\2018\20180518\20180518\SQW5526-017-2.D Tgt Mass (CHM):
 Injection Date : 18 May 18 10:50 am +0800 Seq. Line : 35
 Sample Name : SQW5526-017-2 Location : P1-C-06
 Acq. Operator : SYSTEM Inj : 1
 Spec. Reported : MS Integration Inj Volume : 1 ul
 Acq. Method : D:\LCMS03\Data\2018\20180518\20180518\1-POS-3MIN.M
 Analysis Method : D:\LCMS03\Data\2018\20180518\20180518\1-POS-3MIN.M
 Catalog No : HY-42972 Batch#30158
 Method Info : Mobile Phase: A: water(0.01%TFA) B:ACN(0.01%TFA)
 Gradient: 5% to 95%B within 1.3 min
 Flow Rate :1.8ml/min
 Column :SunFire C18, 4.6*50mm,3.5um A-RP-186
 Oven Temperature : 45C

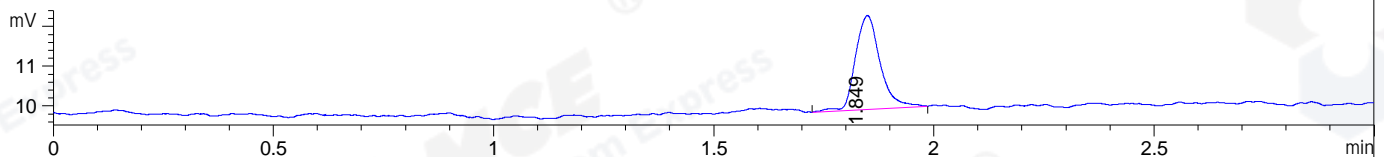
DAD1 A, Sig=214,4 Ref=off



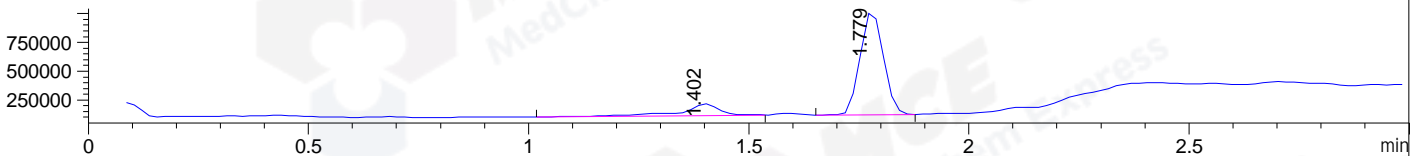
DAD1 B, Sig=254,4 Ref=off



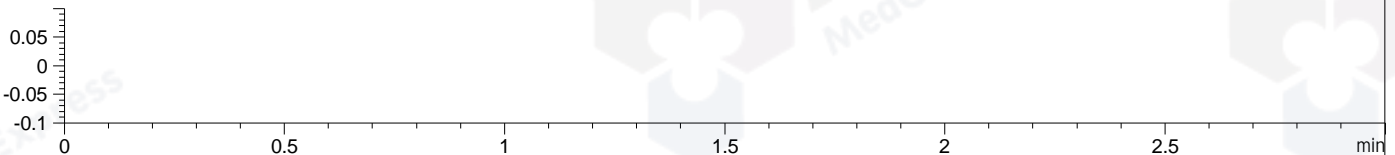
ELS1 A, ELSD Signal



MSD1 TIC, MS File ES-API, Pos, Scan, Frag: 70



Ion 1, MSD1 1, Target Mass 0 +H Positive, EIC=0.7:1.7



Integration Results for DAD1 A, Sig=214,4 Ref=off

RetTim	Width	Area	Height	Area%	MS (+)
1.35	0.03	1.02	0.12	0.14	702
1.48	0.01	0.11	0.19	0.02	233
1.50	0.01	0.41	0.52	0.06	233
1.56	0.02	0.54	0.53	0.07	233
1.69	0.02	1.29	1.21	0.18	233
1.75	0.02	716.30	641.93	98.77	306
2.08	0.02	5.51	5.06	0.76	233

Integration Results for DAD1 B, Sig=254,4 Ref=off

RetTim	Width	Area	Height	Area%	MS (+)
1.50	0.03	0.39	0.25	0.14	233
1.69	0.02	0.40	0.39	0.14	233
1.75	0.02	276.99	245.67	98.32	306
2.02	0.01	0.30	0.37	0.10	233
2.08	0.02	2.86	2.47	1.02	233
2.34	0.02	0.77	0.42	0.27	105

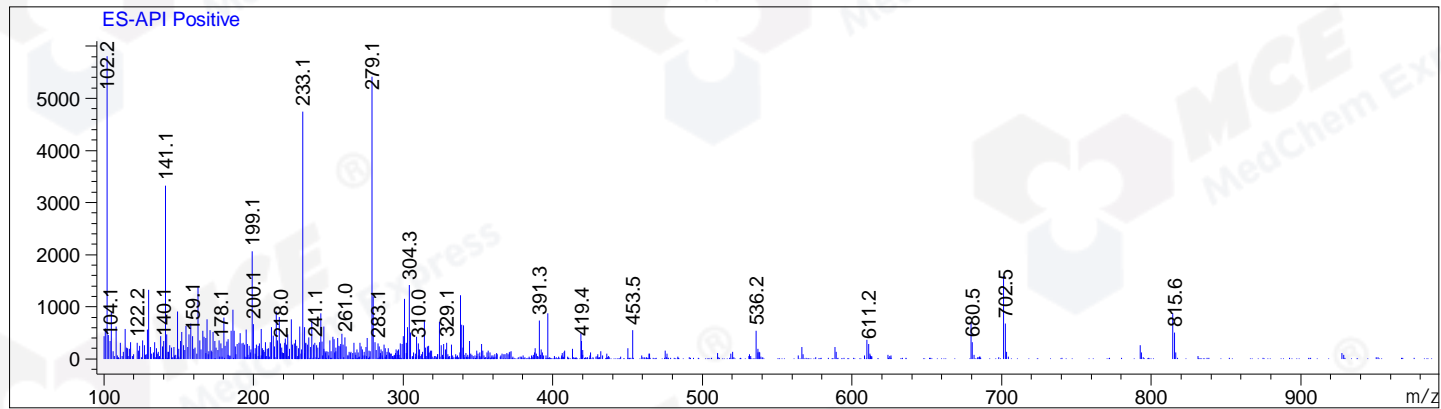
Integration Results for ELS1 A, ELSD Signal

RetTim	Width	Area	Height	Area%	MS (+)
1.85	0.06	9.19	2.36	100.00	306

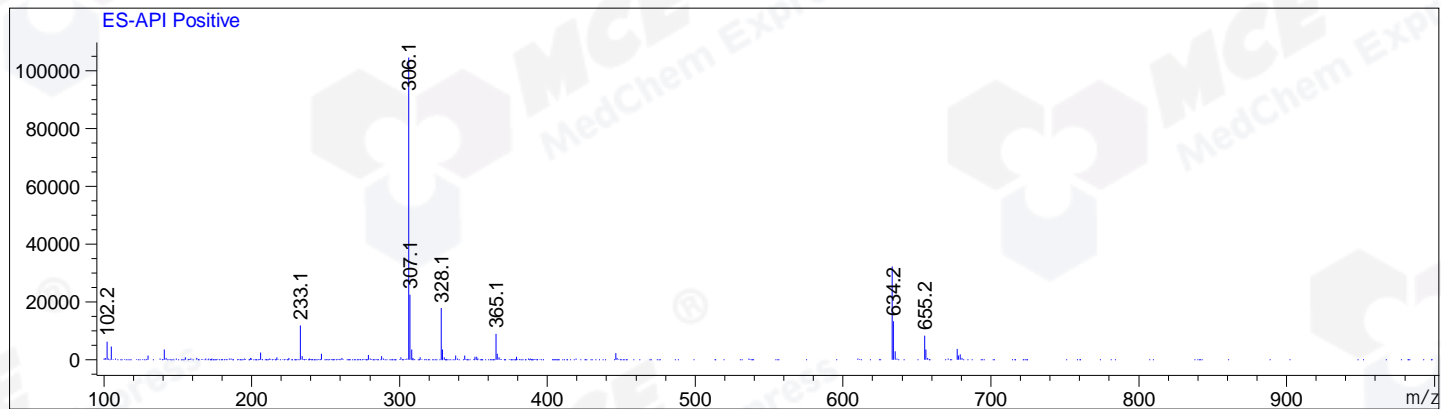
Integration Results for MSD1 TIC, MS File

RetTim	Width	Area	Height	Area%	MS (+)
1.40	0.09	632968.75	102043.33	16.03	102
1.78	0.06	3316242.50	906328.75	83.97	306

Ret. Time: 1.40 <<<< POSITIVE SPECTRA >>>>



Ret. Time: 1.78



*** End of Report ***