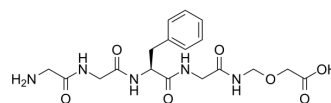


Gly-Gly-Phe-Gly-NH-CH₂-O-CH₂COOH

Cat. No.:	HY-45672
CAS No.:	1599440-20-6
Molecular Formula:	C ₁₈ H ₂₅ N ₅ O ₇
Molecular Weight:	423.42
Target:	ADC Linker
Pathway:	Antibody-drug Conjugate/ADC Related
Storage:	4°C, stored under nitrogen, away from moisture * In solvent : -80°C, 6 months; -20°C, 1 month (stored under nitrogen, away from moisture)



SOLVENT & SOLUBILITY

In Vitro

DMSO : 1 mg/mL (2.36 mM; ultrasonic and warming and heat to 60°C)

Concentration	Mass		
	1 mg	5 mg	10 mg
1 mM	2.3617 mL	11.8086 mL	23.6172 mL
5 mM	---	---	---
10 mM	---	---	---

Please refer to the solubility information to select the appropriate solvent.

BIOLOGICAL ACTIVITY

Description

Gly-Gly-Phe-Gly-NH-CH₂-O-CH₂COOH is an ADC Linker that can be used to synthesize Drug-Linker Conjugates for ADC. Especially for the synthesis of Deruxtecan (HY-13631E), a toxic drug-linker conjugate^[1].

REFERENCES

[1]. Masuda, et al. Preparation of antibody-drug conjugates for cancer therapy. World Intellectual Property Organization, WO2014057687 A1. 2014-04-17.

Caution: Product has not been fully validated for medical applications. For research use only.

Tel: 609-228-6898

Fax: 609-228-5909

E-mail: tech@MedChemExpress.com

Address: 1 Deer Park Dr, Suite Q, Monmouth Junction, NJ 08852, USA