

## A-769662

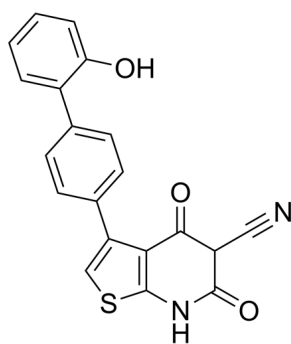
Cat. No.: HY-50662  
Batch No.: 16012  
CAS No.: 844499-71-4  
Molecular Formula: C<sub>20</sub>H<sub>12</sub>N<sub>2</sub>O<sub>3</sub>S

### ANALYTICAL DATA

Theoretical: C(66.65%), H(3.36%), N(7.77%)

Result: C(59.22%), H(6.62%), N(3.70%)

Chemical Structure:



**Caution: Product has not been fully validated for medical applications. For research use only.**

Tel: 609-228-6898

Fax: 609-228-5909

E-mail: [tech@MedChemExpress.com](mailto:tech@MedChemExpress.com)

Address: 1 Deer Park Dr, Suite Q, Monmouth Junction, NJ 08852, USA