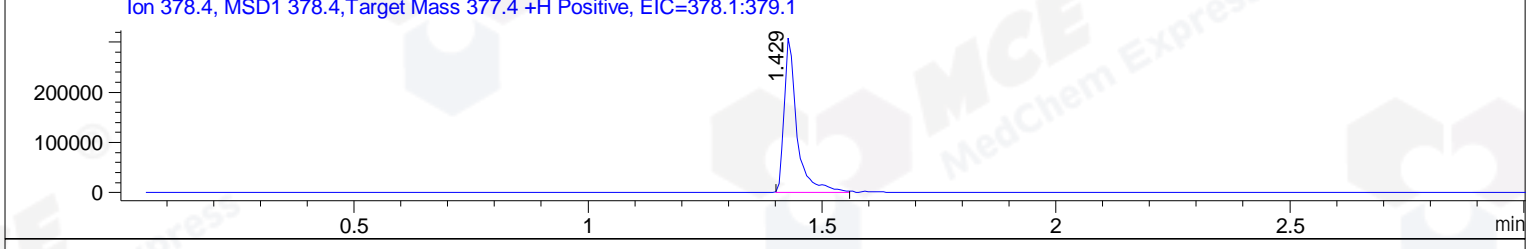
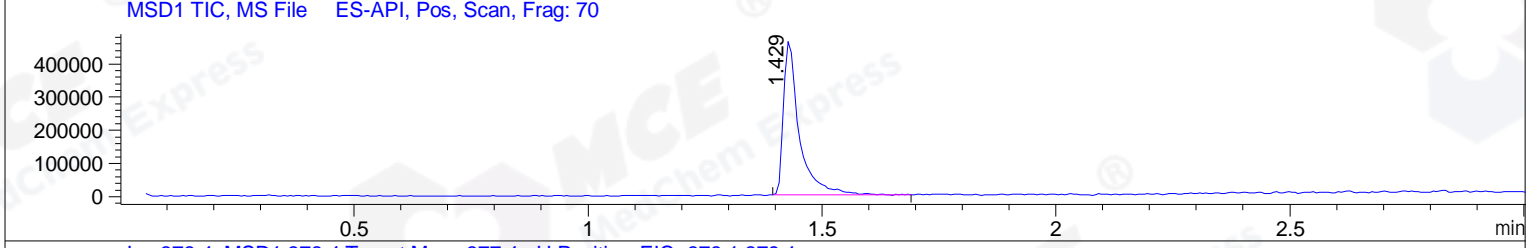
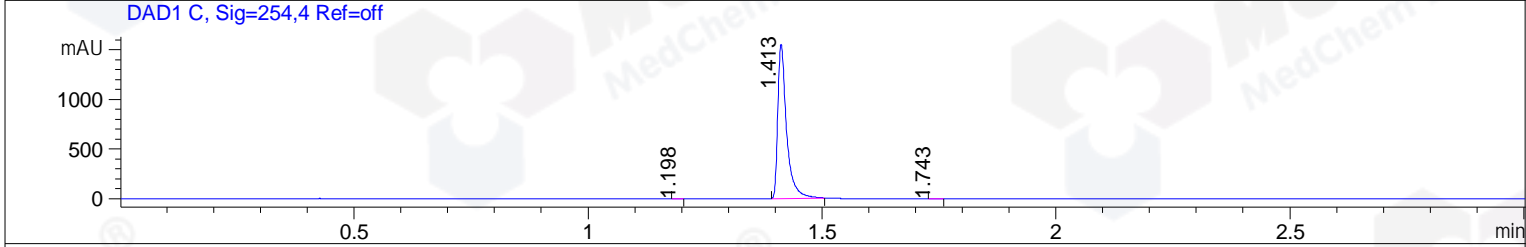
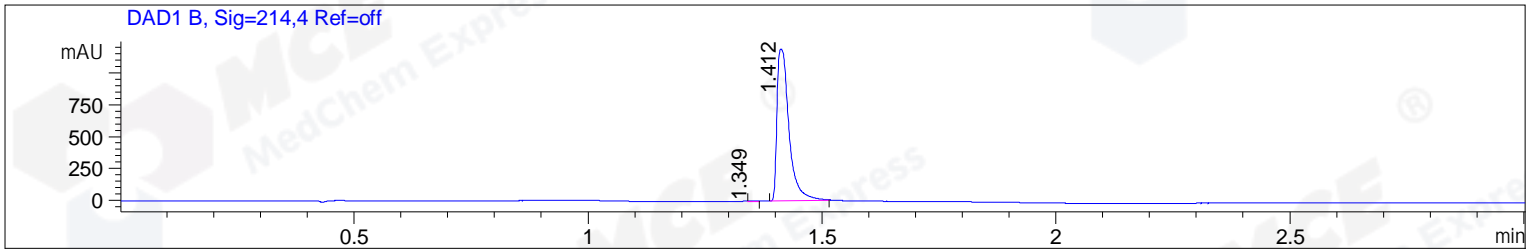


File ..\DATA\2019\20190302\555\CPK2019-221-19954.D Tgt Mass (CHM):
 Injection Date : 2 Mar 19 4:51 pm +0800 Seq. Line : 7
 Sample Name : CPK2019-221-19954 Location : PL-B-08
 Acq. Operator : LQ_1052 Inj : 1
 Spec. Reported : MS Integration Inj Volume : 1 ul
 Acq. Method : D:\Chem32\1\data\2019\20190302\555\1-POS-3MIN-1.M
 Analysis Method : D:\CHEM32\1\DATA\2019\20190302\555\1-POS-3MIN-1.M
 Catalog No : HY-50683 Batch#19954
 Method Info : Mobile Phase: A: water(0.01%TFA) B:ACN(0.01%TFA)
 Gradient: 5% to 95%B within 1.3 min
 Flow Rate :1.8ml/min
 Column :SunFire C18, 4.6*50mm,3.5um A-RP-314
 Oven Temperature : 45



Integration Results for DAD1 B, Sig=214,4 Ref=off

RetTim	Width	Area	Height	Area%	MS (+)
1.35	0.02	1.03	0.92	0.05	ND
1.41	0.03	2133.87	1193.94	99.95	378

Integration Results for DAD1 C, Sig=254,4 Ref=off

RetTim	Width	Area	Height	Area%	MS (+)
1.20	0.02	0.33	0.29	0.02	ND
1.41	0.02	2046.10	1554.96	99.93	378
1.74	0.02	1.01	0.90	0.05	ND

Integration Results for MSD1 TIC, MS File

RetTim	Width	Area	Height	Area%	MS (+)
1.43	0.03	1085386.00	466749.22	100.00	378

Ret. Time: 1.43

<<<< POSITIVE SPECTRA >>>>

ES-API Positive

