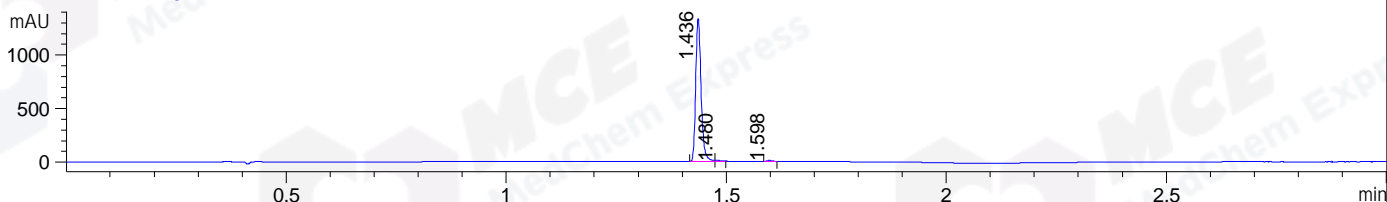
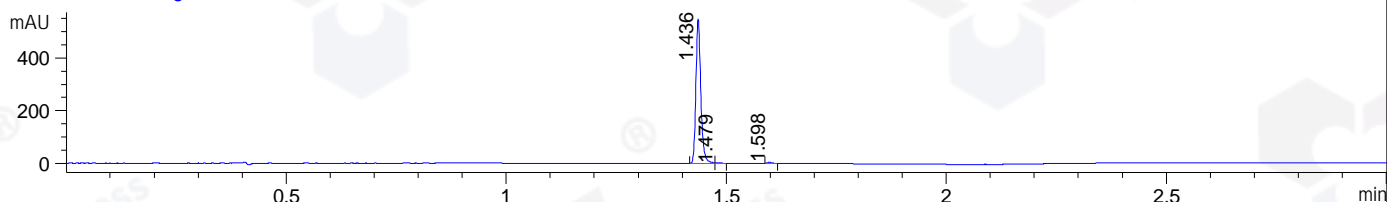


File ..DATA\2020\20201029\1140\BIZ2020-O27-SCH15.D Tgt Mass (CHM):  
 Injection Date : 29 Oct 20 5:46 pm +0800 Seq. Line : 105  
 Sample Name : BIZ2020-O27-SCH15 Location : P1-B-09  
 Acq. Operator : zyj\_1547 Inj : 1  
 Spec. Reported : MS Integration Inj Volume : 1 ul  
 Acq. Method : D:\Chem32\1\data\2020\20201029\1140\1-POS-3MIN.M  
 Analysis Method : D:\CHEM32\1\DATA\2020\20201029\1140\1-POS-3MIN.M  
 CAS NO. : 548472-68-0  
 Method Info : Mobile Phase: A: water(0.01%TFA) B:ACN(0.01%TFA)  
 Gradient: 5% to 95%B within 1.3 min  
 Flow Rate :1.8ml/min  
 Column :SunFire C18, 4.6\*50mm,3.5um A-RP-698

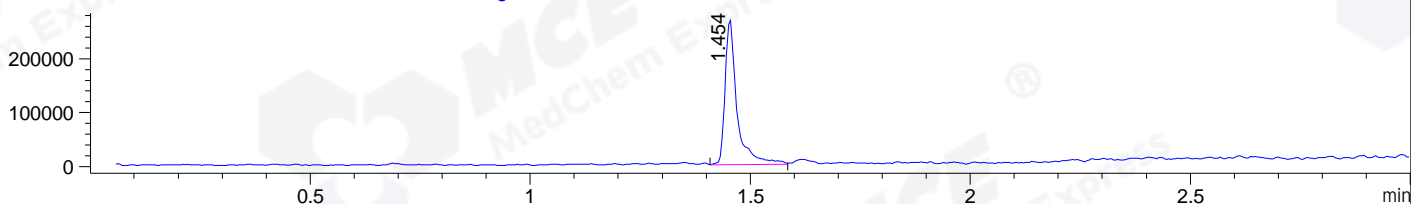
DAD1 B, Sig=214,4 Ref=off



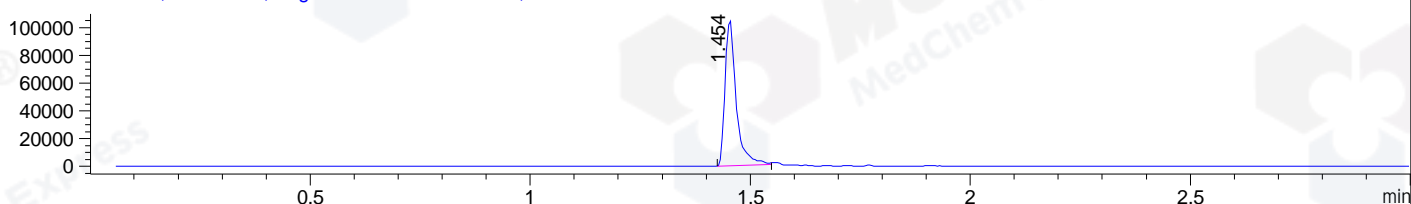
DAD1 C, Sig=254,4 Ref=off



MSD1 TIC, MS File ES-API, Pos, Scan, Frag: 70



Ion 581, MSD1 581, Target Mass 580 +H Positive, EIC=580.7:581.7



Integration Results for DAD1 B, Sig=214,4 Ref=off

RetTim	Width	Area	Height	Area%	MS(+)
1.44	0.01	1136.91	1334.21	98.90	581
1.48	0.01	6.32	7.48	0.55	581
1.60	0.01	6.31	8.35	0.55	ND

Integration Results for DAD1 C, Sig=254,4 Ref=off

RetTim	Width	Area	Height	Area%	MS(+)
1.44	0.01	429.34	547.83	98.89	581
1.48	0.01	2.07	2.38	0.48	581
1.60	0.01	2.77	3.73	0.64	ND

Integration Results for MSD1 TIC, MS File

RetTim	Width	Area	Height	Area%	MS(+)
1.45	0.03	508301.16	271156.94	100.00	581

Ret. Time: 1.45

<<<< POSITIVE SPECTRA >>>>

ES-API Positive

