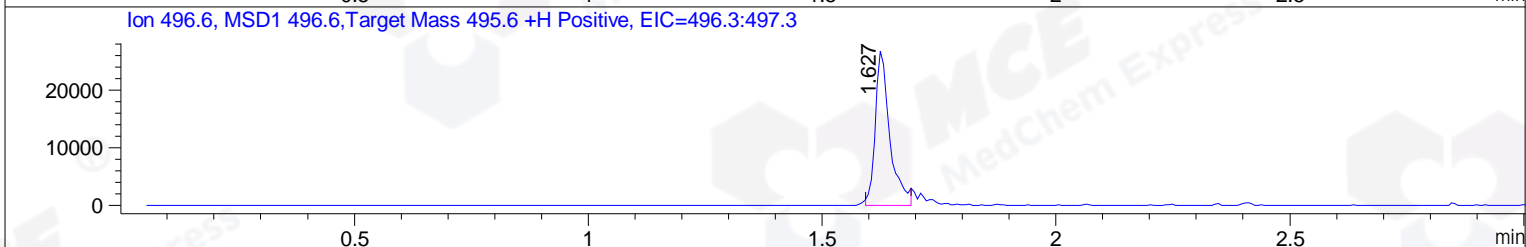
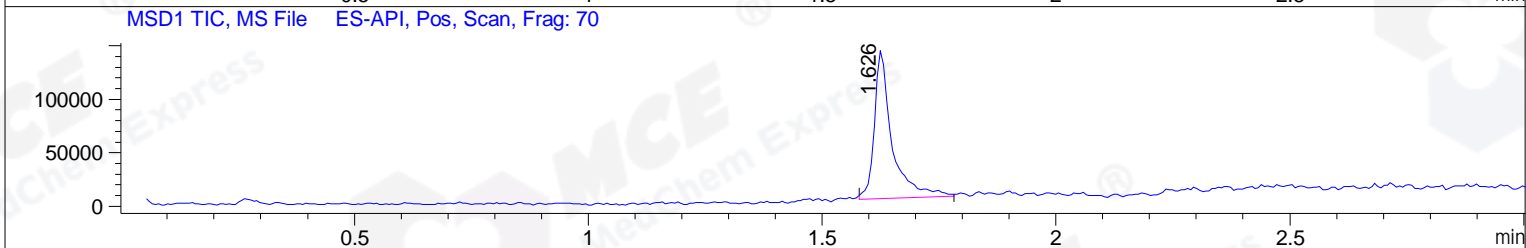
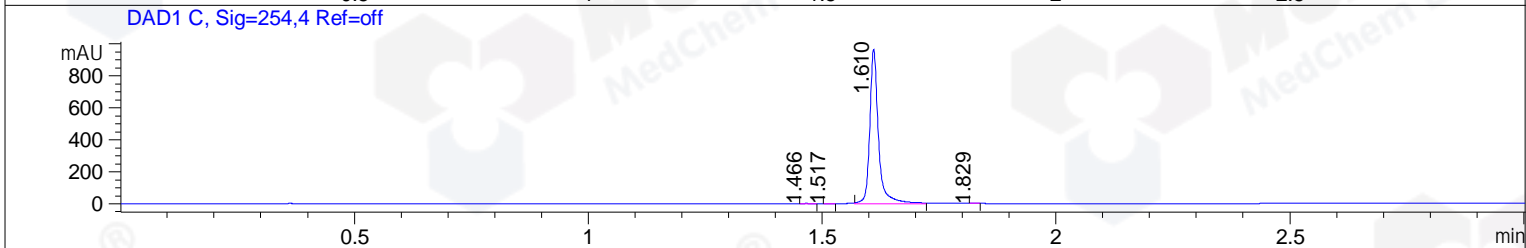
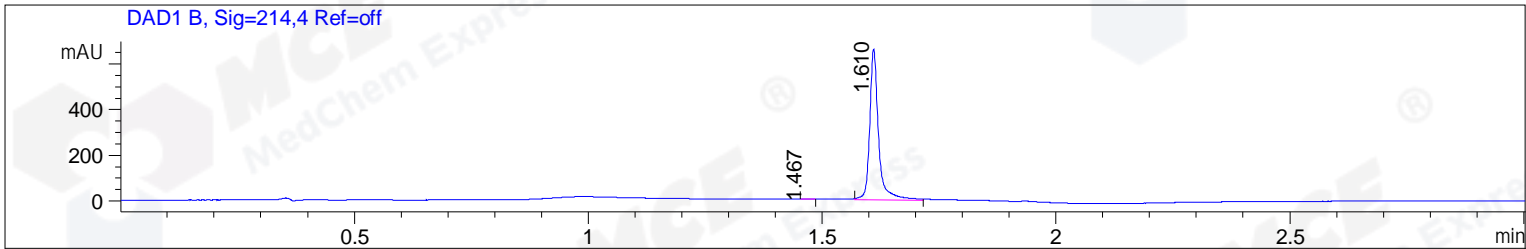


File ..\DATA\2019\20190416\562\CPK2019-415-20265.D Tgt Mass (CHM):
 Injection Date : 16 Apr 19 10:58 am +0800 Seq. Line : 24
 Sample Name : CPK2019-415-20265 Location : P1-D-03
 Acq. Operator : LQ_1052 Inj : 1
 Spec. Reported : MS Integration Inj Volume : 1 ul
 Acq. Method : D:\Chem32\1\data\2019\20190416\562\1-POS-3MIN-1.M
 Analysis Method : D:\CHEM32\1\DATA\2019\20190416\562\1-POS-3MIN-1.M
 Catalog No : HY-50703 Batch#20265
 Method Info : Mobile Phase: A: water(0.01%TFA) B:ACN(0.01%TFA)
 Gradient: 5% to 95%B within 1.3 min
 Flow Rate :1.8ml/min
 Column :SunFire C18, 4.6*50mm,3.5um A-RP-314
 Oven Temperature : 45



Integration Results for DAD1 B, Sig=214,4 Ref=off

RetTim	Width	Area	Height	Area%	MS (+)
1.47	0.02	0.72	0.73	0.08	ND
1.61	0.02	882.65	639.35	99.92	496

Integration Results for DAD1 C, Sig=254,4 Ref=off

RetTim	Width	Area	Height	Area%	MS (+)
1.47	0.02	1.14	1.18	0.09	ND
1.52	0.01	0.49	0.55	0.04	ND
1.61	0.02	1258.62	932.73	99.86	496
1.83	0.01	0.18	0.23	0.01	505

Integration Results for MSD1 TIC, MS File

RetTim	Width	Area	Height	Area%	MS (+)
1.63	0.04	363419.72	138707.31	100.00	496

Ret. Time: 1.63

<<<< POSITIVE SPECTRA >>>>

ES-API Positive

