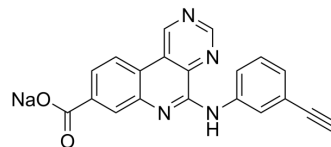


CX-5011

Cat. No.:	HY-50733A
CAS No.:	1333382-30-1
Molecular Formula:	C ₂₀ H ₁₁ N ₄ NaO ₂
Molecular Weight:	362.32
Target:	Casein Kinase; Ras; Apoptosis
Pathway:	Cell Cycle/DNA Damage; Stem Cell/Wnt; GPCR/G Protein; Apoptosis
Storage:	Please store the product under the recommended conditions in the Certificate of Analysis.



BIOLOGICAL ACTIVITY

Description	CX-5011 is a CK2 inhibitor. CX-5011 also induces Rac1 activation. CX-5011 induces apoptosis and induces cancer cell death ^[1] [2].
-------------	-----------------------------------------------------------------------------------------------------------------------------------------------

REFERENCES

[1]. D'Amore C, et al. "Janus" efficacy of CX-5011: CK2 inhibition and methuosis induction by independent mechanisms. *Biochim Biophys Acta Mol Cell Res.* 2020 Nov;1867(11):118807.

[2]. Salizzato V, et al. Inhibition of protein kinase CK2 by CX-5011 counteracts imatinib-resistance preventing rpS6 phosphorylation in chronic myeloid leukaemia cells: new combined therapeutic strategies. *Oncotarget.* 2016 Apr 5;7(14):18204-18.

Caution: Product has not been fully validated for medical applications. For research use only.

Tel: 609-228-6898

Fax: 609-228-5909

E-mail: tech@MedChemExpress.com

Address: 1 Deer Park Dr, Suite Q, Monmouth Junction, NJ 08852, USA