

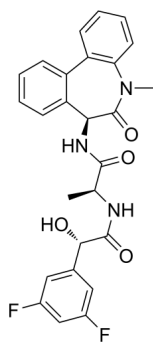
LY-411575

Cat. No.: HY-50752
Batch No.: 09004
CAS No.: 209984-57-6
Molecular Formula: C₂₆H₂₃F₂N₃O₄

ANALYTICAL DATA

Theoretical: C(65.13%)、H(4.83%)、N(8.76%)
Result: C(65.165%)、H(4.625%)、N(8.605%)

Chemical Structure:



Caution: Product has not been fully validated for medical applications. For research use only.

Tel: 609-228-6898

Fax: 609-228-5909

E-mail: tech@MedChemExpress.com

Address: 1 Deer Park Dr, Suite Q, Monmouth Junction, NJ 08852, USA