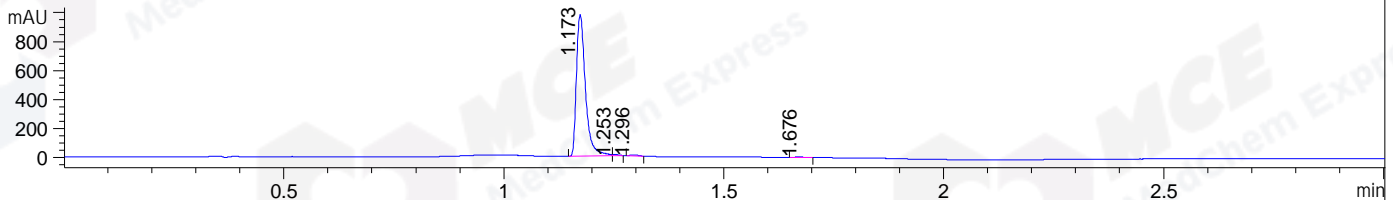
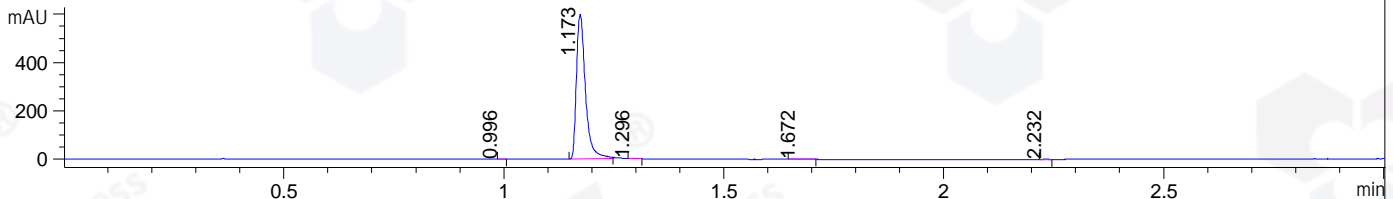


File ..\DATA\2019\20190308\548\CPK2019-307-11006.D Tgt Mass (CHM):
 Injection Date : 8 Mar 19 2:01 pm +0800 Seq. Line : 31
 Sample Name : CPK2019-307-11006 Location : P1-F-01
 Acq. Operator : LQ_1052 Inj : 1
 Spec. Reported : MS Integration Inj Volume : 1 ul
 Acq. Method : D:\Chem32\1\data\2019\20190308\548\1-POS-3MIN-1.M
 Analysis Method : D:\CHEM32\1\DATA\2019\20190308\548\1-POS-3MIN-1.M
 Catalog No : HY-50846 Batch#11006
 Method Info : Mobile Phase: A: water(0.01%TFA) B:ACN(0.01%TFA)
 Gradient: 5% to 95%B within 1.3 min
 Flow Rate :1.8ml/min
 Column :SunFire C18, 4.6*50mm,3.5um A-RP-314
 Oven Temperature : 45□

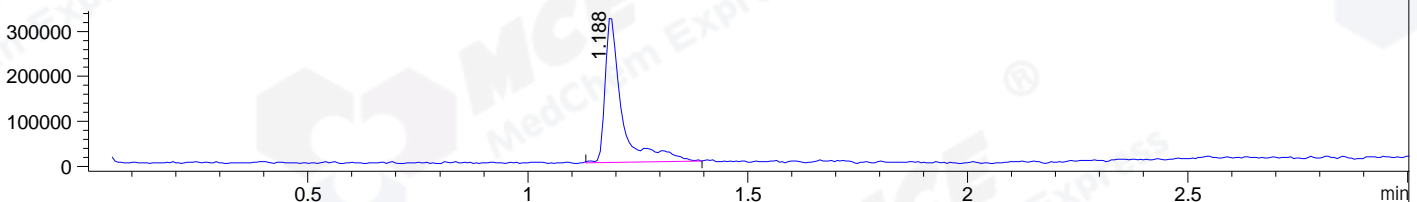
DAD1 B, Sig=214,4 Ref=off



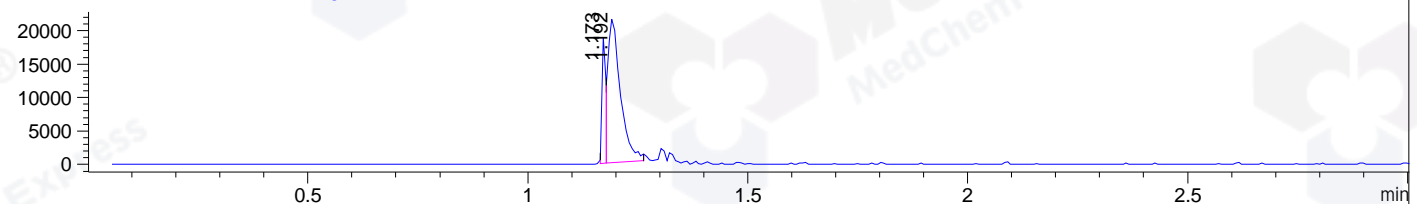
DAD1 C, Sig=254,4 Ref=off



MSD1 TIC, MS File ES-API, Pos, Scan, Frag: 70



Ion 588.7, MSD1 588.7, Target Mass 587.7 +H Positive, EIC=588.4:589.4



Integration Results for DAD1 B, Sig=214,4 Ref=off

RetTim	Width	Area	Height	Area%	MS (+)
1.17	0.02	1394.82	978.68	98.46	295
1.25	0.02	7.83	8.24	0.55	295
1.30	0.02	9.82	8.00	0.69	451
1.68	0.04	4.11	1.92	0.29	ND

Integration Results for DAD1 C, Sig=254,4 Ref=off

RetTim	Width	Area	Height	Area%	MS (+)
1.00	0.01	0.24	0.28	0.03	226
1.17	0.02	851.81	599.29	99.53	295
1.30	0.02	1.49	1.50	0.17	295
1.67	0.03	1.89	0.91	0.22	ND
2.23	0.02	0.41	0.39	0.05	142

Integration Results for MSD1 TIC, MS File

RetTim	Width	Area	Height	Area%	MS (+)
--------	-------	------	--------	-------	--------

1.19 0.04 866873.50 332387.34 100.00 295

Ret. Time: 1.19

<<<< POSITIVE SPECTRA >>>>

ES-API Positive

