

File ..3\Data\20180104\20180104\BIZ2018-104-WYQ3.D Tgt Mass (CHM):

Injection Date : 4 Jan 18 2:54 pm +0800 Seq. Line : 69

Sample Name : BIZ2018-104-WYQ3 Location : P1-F-07

Acq. Operator : SYSTEM Inj : 1

Spec. Reported : MS Integration Inj Volume : 5 ul

Acq. Method : D:\LCMS03\Data\20180104\20180104\1-POS-3MIN.M

Analysis Method : D:\LCMS03\Data\20180104\20180104\1-POS-3MIN.M

Catalog No : HY-50855 Batch#28101

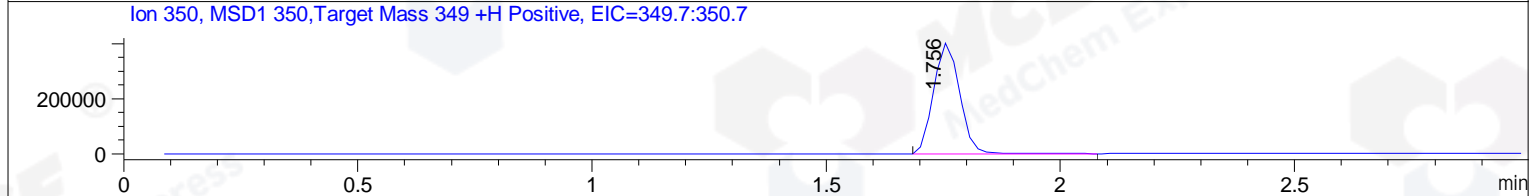
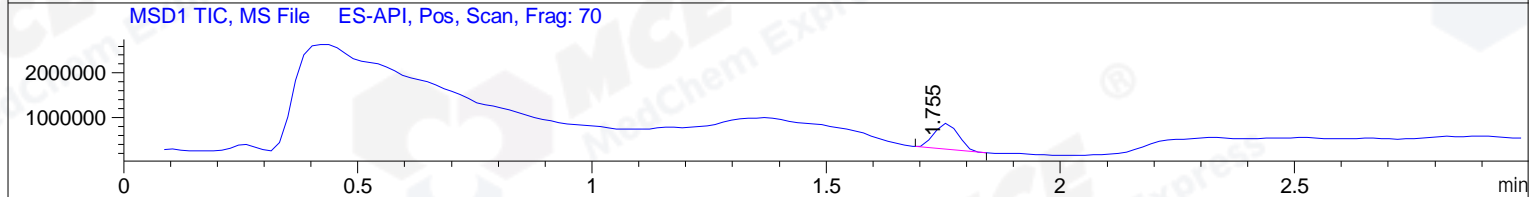
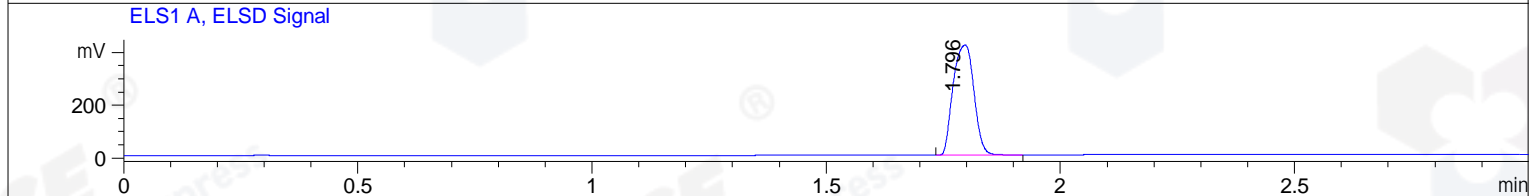
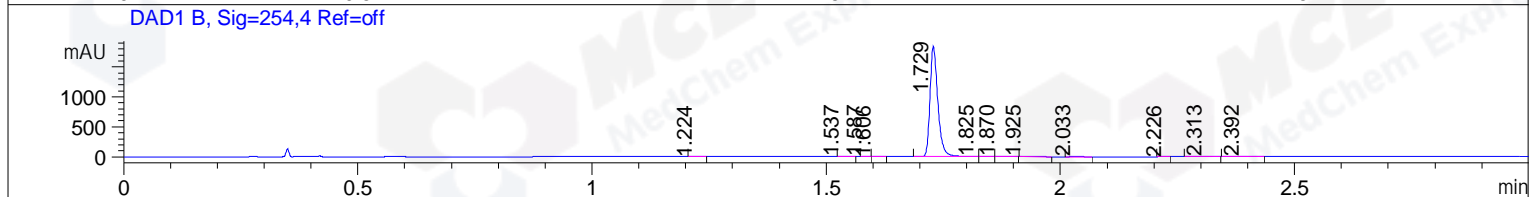
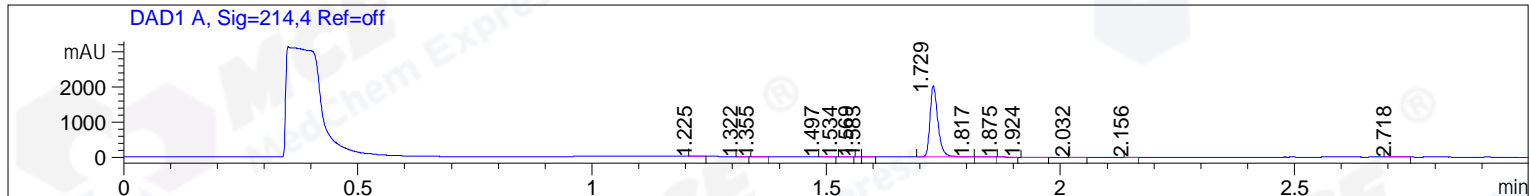
Method Info : Mobile Phase: A: water(0.01%TFA) B:ACN(0.01%TFA)

Gradient: 5% to 95%B within 1.3 min

Flow Rate :1.8ml/min

Column :SunFire C18, 4.6*50mm,3.5um A-RP-186

Oven Temperature : 45C



Integration Results for DAD1 A, Sig=214,4 Ref=off

RetTim	Width	Area	Height	Area%	MS (+)
1.22	0.02	1.06	0.88	0.04	157
1.32	0.02	0.73	0.71	0.03	157
1.36	0.03	0.75	0.50	0.03	157
1.50	0.02	0.84	0.82	0.04	157
1.53	0.02	0.32	0.31	0.01	157
1.57	0.01	0.03	0.07	0.00	157
1.58	0.02	0.43	0.43	0.02	157
1.73	0.02	2372.16	2032.82	99.55	350
1.82	0.02	1.51	1.41	0.06	157
1.88	0.02	0.79	0.55	0.03	157
1.92	0.02	0.61	0.43	0.03	157
2.03	0.02	1.45	1.42	0.06	157
2.16	0.01	0.29	0.32	0.01	105
2.72	0.03	1.97	1.05	0.08	105

Integration Results for DAD1 B, Sig=254,4 Ref=off

RetTim	Width	Area	Height	Area%	MS (+)
--------	-------	------	--------	-------	--------

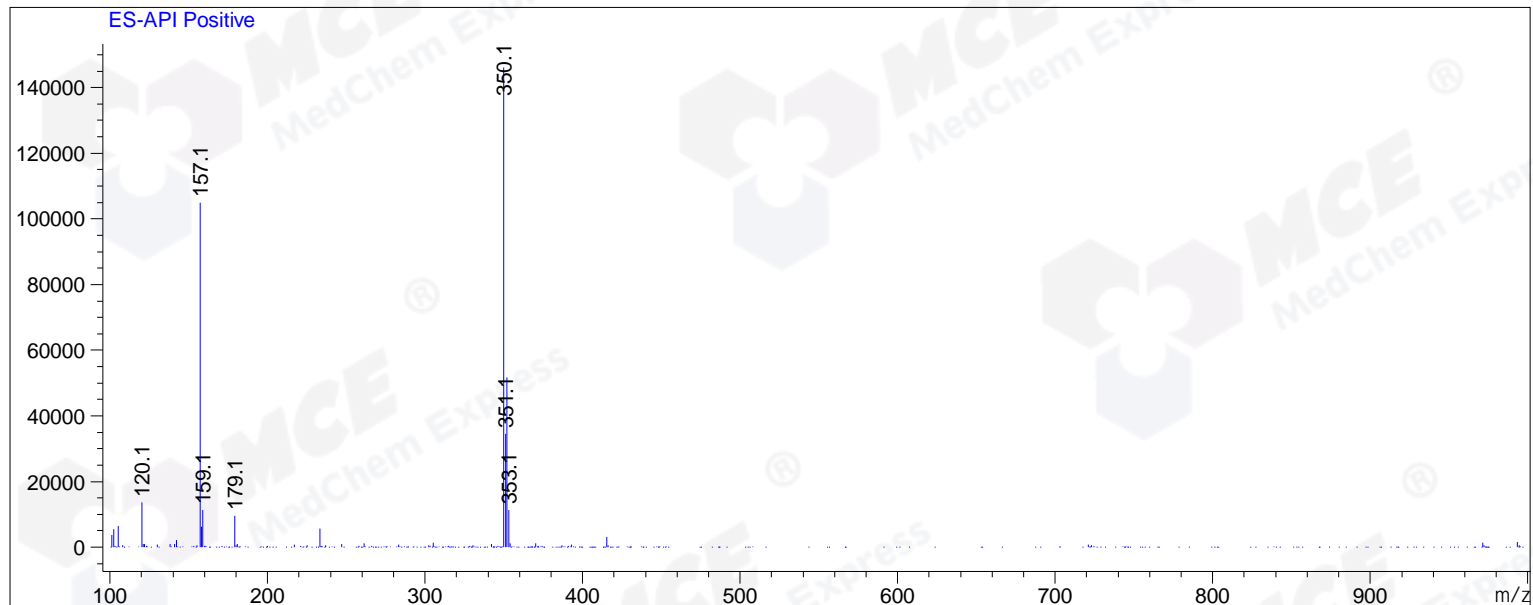
1.22	0.02	0.46	0.40	0.02	157
1.54	0.02	0.46	0.44	0.02	157
1.59	0.01	0.38	0.51	0.02	157
1.61	0.02	0.39	0.39	0.02	157
1.73	0.02	2145.60	1844.61	99.39	350
1.83	0.02	1.66	1.18	0.08	157
1.87	0.03	1.01	0.61	0.05	157
1.93	0.02	0.72	0.50	0.03	157
2.03	0.02	5.71	5.14	0.26	157
2.23	0.02	0.22	0.22	0.01	105
2.31	0.03	1.11	0.58	0.05	105
2.39	0.03	1.01	0.50	0.05	105

Integration Results for MSD1 TIC, MS File

RetTim	Width	Area	Height	Area%	MS (+)
1.76	0.06	2057919.13	582293.38	100.00	350

Ret. Time: 1.76

<<<< POSITIVE SPECTRA >>>>



*** End of Report ***