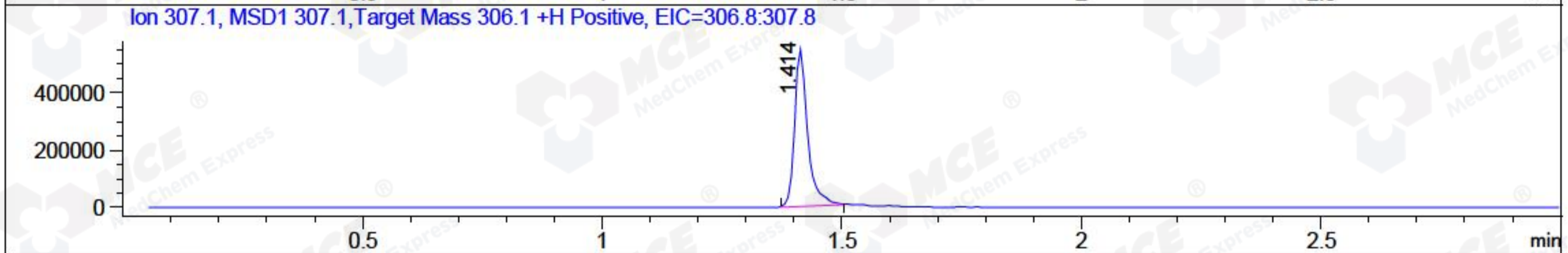
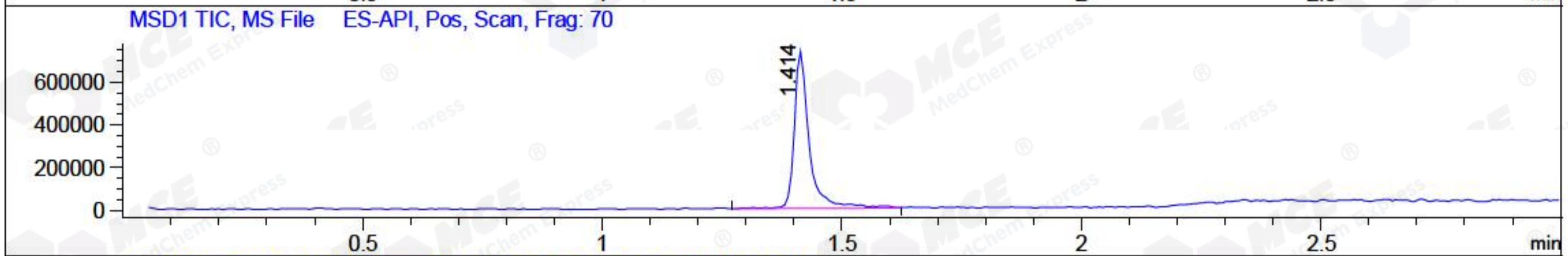
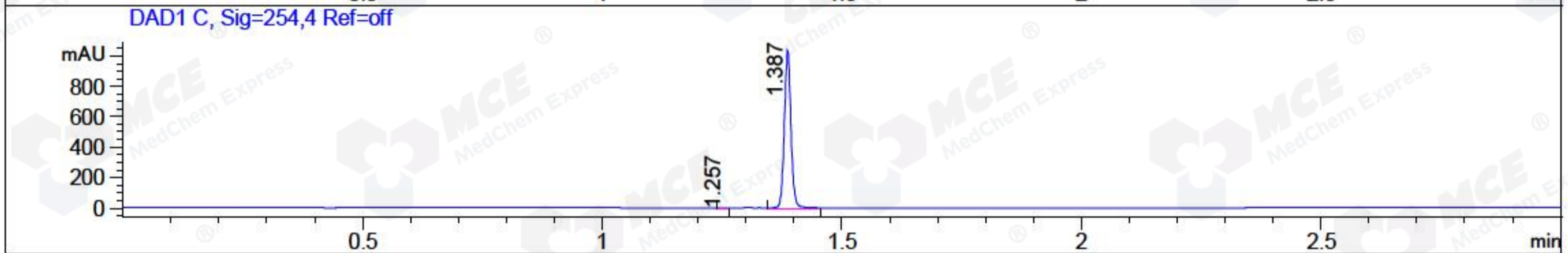
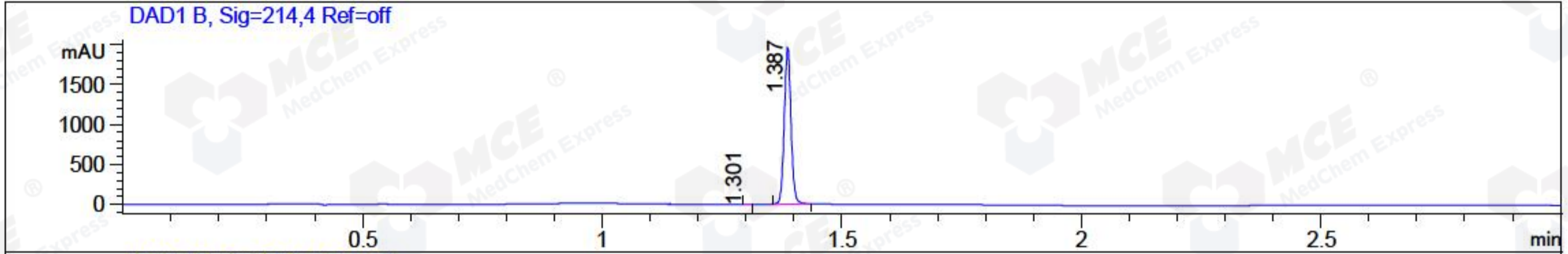


File ..DATA\2018\20181030\470\BIZ2018-030-WYQ14.D Tgt Mass (CHM):
 Injection Date : 30 Oct 18 3:58 pm +0800 Seq. Line : 80
 Sample Name : BIZ2018-030-WYQ14 Location : P2-D-05
 Acq. Operator : LQ_1052 Inj : 1
 Spec. Reported : MS Integration Inj Volume : 1 ul
 Acq. Method : D:\Chem32\1\data\2018\20181030\470\1-POS-3MIN-1.M
 Analysis Method : D:\CHEM32\1\DATA\2018\20181030\470\1-POS-3MIN-1.M
 Catalog No : HY-50856 Batch#33870 A-RP-314
 Method Info : Mobile Phase: A: water(0.01%TFA) B:ACN(0.01%TFA)
 Gradient: 5% to 95%B within 1.3 min
 Flow Rate :1.8ml/min
 Column :SunFire C18, 4.6*50mm,3.5um A-RP-314
 Oven Temperature : 45□



Integration Results for DAD1 B, Sig=214,4 Ref=off

RetTim	Width	Area	Height	Area%	MS (+)
1.30	0.01	0.25	0.36	0.01	ND
1.39	0.02	1921.93	1957.69	99.99	307

Integration Results for DAD1 C, Sig=254,4 Ref=off

RetTim	Width	Area	Height	Area%	MS (+)
1.26	0.02	0.13	0.13	0.01	ND
1.39	0.02	989.39	1037.23	99.99	307

Integration Results for MSD1 TIC, MS File

RetTim	Width	Area	Height	Area%	MS (+)
1.41	0.03	1624288.13	736535.13	100.00	307

Ret. Time: 1.41

<<<< POSITIVE SPECTRA >>>>

ES-API Positive

